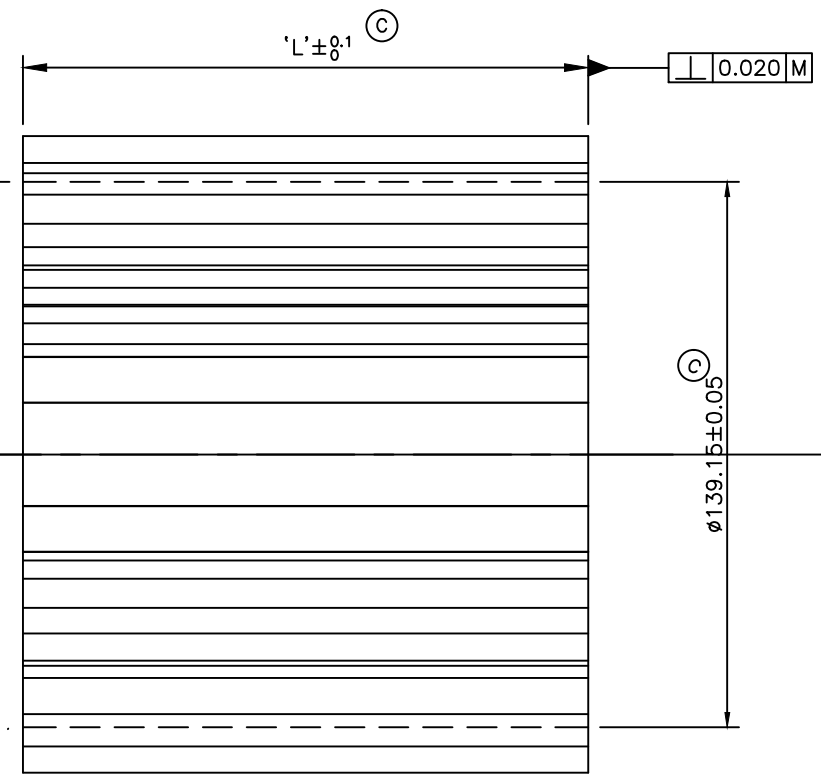
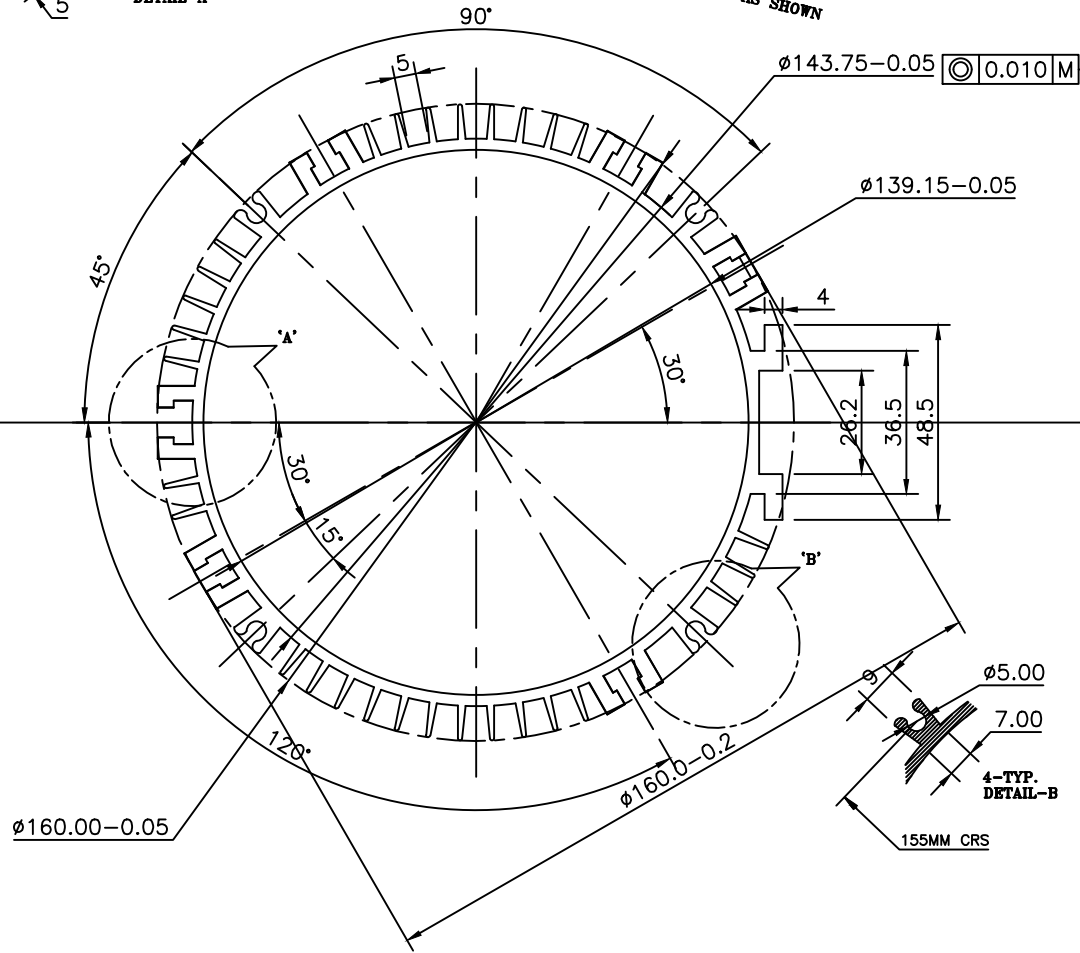
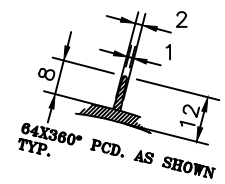
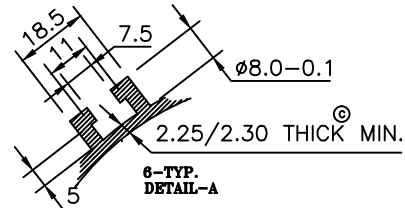


THIS DRAWING IS THE PROPERTY OF M/S. AVON MOTOR INDUSTRY. IT MUST BE USED DIRECTLY OR INDIRECTLY IN ANY WAY DETRIMENTAL TO THE INTEREST OF THE COMPANY.

OVER 1000 UP TO 2000	OVER 400 UP TO 1000	OVER 120 UP TO 400	OVER 30 UP TO 120	OVER 6 UP TO 30	OVER 0.5 UP TO 6	CRITICAL TO QUALITY REQUIREMENT (SUCROSE CONTROL & DIMENSION)	
±1.2	±0.8	±0.5	±0.3	±0.2	±0.1		
GENERAL TOLERANCES AS PER IS:2102 MED.						(P)	PROCESS
						(E)	ENGINEERING
						(C)	CUSTOMER
						(R)	REGULATORY



1.	134	
GR#	DIM-'L'	MODAL No.

- NOTES:**
- DRAWING NUMBER, CAVITY NUMBER, AND ALL OTHER IDENTIFICATION MARKS TO APPEAR ON SURFACE USE 2.25mm MIN. FIGURES RAISED 0.12 TO 0.25
 - UNLESS OTHERWISE SPECIFIED DRAFT 0.5 MAX. PKR INCH PER SURFACE. ECCENTRICITY BETWEEN DIAMETERS MUST NOT EXCEED 0.5mm T.I.R..
 - EJECTOR PIN MARKS INCLUDING FLASH TO BE 0.02 DEPRESSED TO .00 RAISED.
 - WHEN PROPERLY CHUCKED ON SURFACE RELATIVE TO CENTERLINE, TOTAL AXIAL RUNOUT OF SURFACE AA (4 BOSSES) MUST BE WITHIN 0.25 AND ECCENTRICITY OF SURFACE DD MUST NOT EXCEED 0.25 T.I.R., AND ECCENTRICITY OF SURFACES BB, CC & EE MUST NOT EXCEED 0.5 T.I.R..
 - MATERIAL : LM-24

REV. No.	DESCRIPTION	DATE	CHD	APD.	SCALE:	NTS	PART DESCRIPTION
					GEN. TOL. AS PER IS:2102 MED.	SHEET 1 OF 1	EXTRUDED SHEEL
							DRG. NO. 06D-H-DEV

2023	DATE	SIGNATURES	MAT.
DESIGN	19/02	AVINASH NIGAM	
CHKD			
APPD			
			AVON MOTOR INDUSTRY