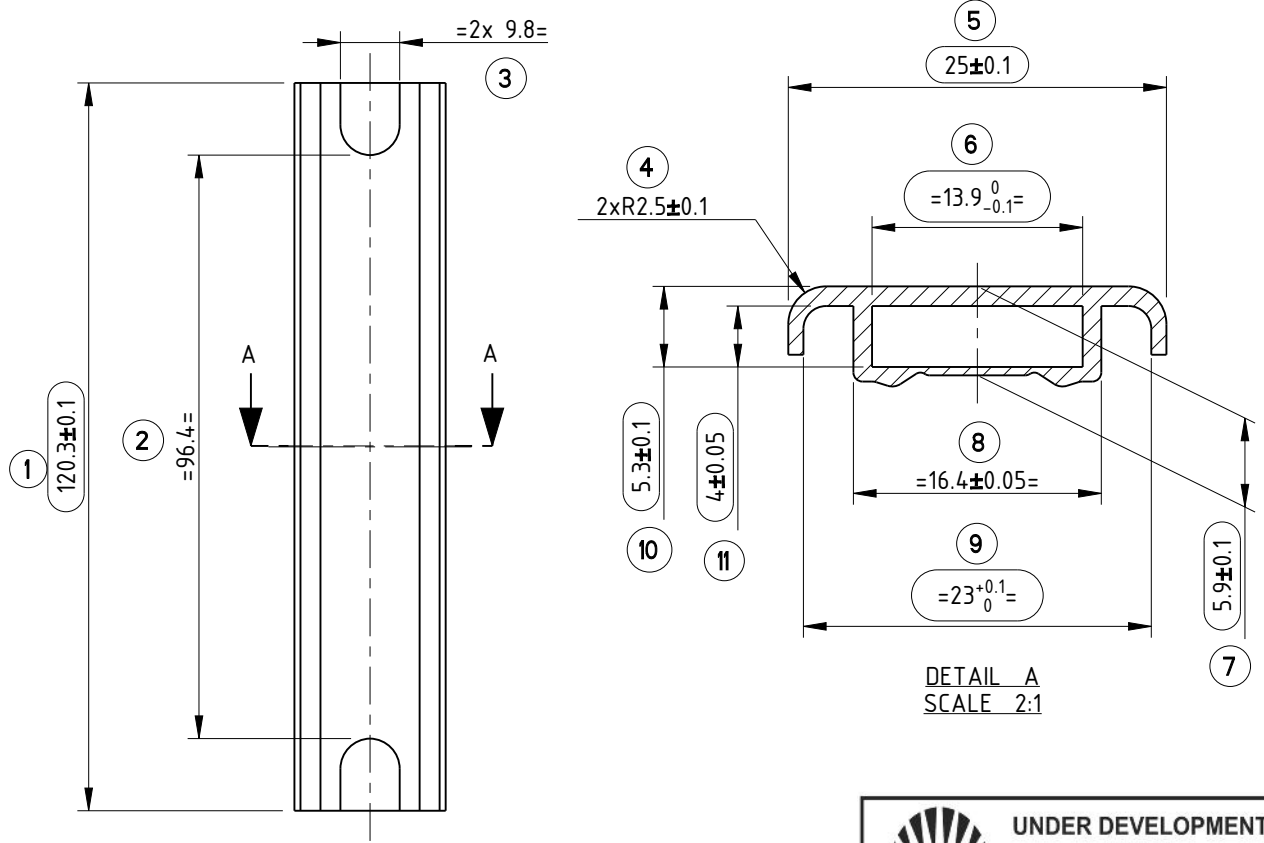
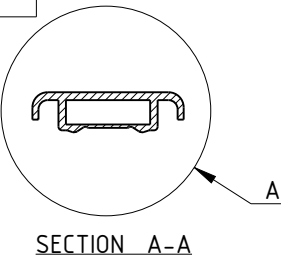


TOTAL DIMENSION	11
CTQ DIMENSION	07
CRITICAL TO TOOLING DIMENSION	-

GENERAL TOLERANCES WHERE NOT SPECIFIED AS PER ISO 8062-3: 2007(E)									
NOMINAL DIM.(mm)	0-10	10-16	16-25	25-40	40-63	63-100	100-160	160-250	250-400
TOL. (±)	0.18	0.19	0.21	0.23	0.25	0.28	0.31	0.35	0.39



NOTES:

- CHECK FITMENT WITH INSULATOR
- REFER 3D MODEL FOR NON FUNCTIONAL DIMENSION
- UNSPECIFIED RADUIS 0.5mm
- ★ MARKED DIMENSION TO BE FINE TUNED AFTER FITMENT CHECK WITH MATING PARTS
- VISIBLE SURFACES INDICATED TO BE FREE FROM VISIBLE SPLIT MARKS, SINKS, GATES & VISIBLE FLAWS
- EJECTOR PIN MARKS TO BE FLUSH UNDER FLUSH 0.1mm MAX
- FOR CAVITY NO., CALENDAR, EJECTOR & INJECTION MARKING, CONSULT WITH DESIGNER

UNDER DEVELOPMENT COPY
DATE : 10.10.2023
HAVELLS INDIA LIMITED

PART MUST COMPLY TO HAVELLS RoHS NORMS: CRI/APPLIANCES/RoHS GUIDELINES

REV. NO.	ECN.NO.	AMENDMENTS	DATE	DRN	CHKD.	APPD.	
(SI)		Critical To Quality Characterstic (CTQ)	10.10.2023	SWARAJ	S.MADHAW	A.BHALLA	
GENERAL TOLERANCES : AS PER GE. TOL. TABLE		MATERIAL\GRADE\SPEC : AL 6063-T6 4mm*22mm (t=1.2mm) (Silver Plating with Ceramic coat)	GROSS WT. : - Kg	NET WT. : 0.0192 [±5%] Kg			
PROJECTION		SCALE: NTS	FINISH\COLOUR :		SURFACE AREA: cm ²		
 HAVELLS HAVELLS INDIA LTD. Centre for Research & Innovation (CRI) ORG Towers, 2D, Sector-126 Noida - 201 304 UP (India)		DEV DRG NO:	QTY/ASSY : 2		PARENT ASSLY :		
		PROJECT: HAIR STRAIGHTENER HS410X			STATE : UNDER DEVELOPMENT		
		SUPERSEDES: NA	DRG. NO. : HEATING_PLATE				
		TITLE : HEATING PLATE			REV. NO : 00	ISSUE NO :	
			SHEET 1/1	FORMAT : A4			

Do not scale the drawing unless otherwise specified.
Remove burrs & sharp corners unless specified.

This drawing is the sole property of HAVELLS INDIA LTD. Unauthorised use of this drawing, information disclosing, copying, loan, using for sub contracting, Tendering or any other misuse is not permitted.

FILE PATH /Products/NECPG22005_Straightener - HS410x Make in India/Phase 3 Detailed Desig