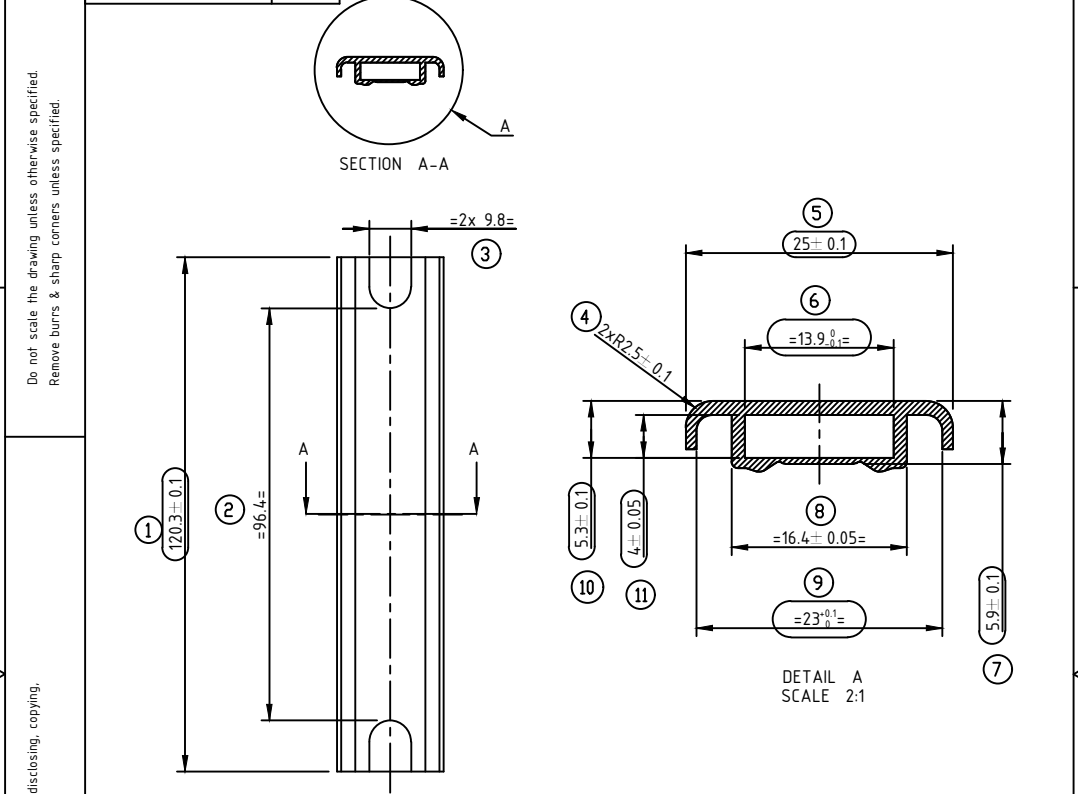


TOTAL DIMENSION	11
CTQ DIMENSION	07
CRITICAL TO TOOLING DIMENSION	-

GENERAL TOLERANCES WHERE NOT SPECIFIED AS PER ISO 8062-3: 2007(E)									
NOMINAL DIM.(mm)	0-10	10-16	16-25	25-40	40-63	63-100	100-160	160-250	250-400
TOL. (-)	0.18	0.19	0.21	0.23	0.25	0.28	0.31	0.35	0.39



NOTES:

- CHECK FITMENT WITH INSULATOR
- REFER 3D MODEL FOR NON FUNCTIONAL DIMENSION
- UNSPECIFIED RADIUS 0.5mm
- MARKED DIMENSION TO BE FINE TUNED AFTER FITMENT CHECK WITH MATING PARTS
- VISIBLE SURFACES INDICATED TO BE FREE FROM VISIBLE SPLIT MARKS, SINKS, GATES & VISIBLE FLAWS
- EJECTOR PIN MARKS TO BE FLUSH UNDER FLUSH 0.1mm MAX
- FOR CAVITY NO., CALENDAR, EJECTOR & INJECTION MARKING, CONSULT WITH DESIGNER

10.10.2023

PART MUST COMPLY TO HAVELLS RoHS NORMS: CRI/APPLIANCES/RoHS GUIDELINES

REV. NO.	ECN.NO.	AMENDMENTS	DATE	DRN	CHKD.	APPD.
00			10.10.2023	SWARAJ	S.MADHAW	A.BHALLA
<input checked="" type="checkbox"/> Critical To Quality Characteristic (CTQ)		MATERIAL\GRADE\SPEC :				
GENERAL TOLERANCES : AS PER GE. TOL. TABLE		AL 6063-T6 4mm*22mm (t=1.2mm) (Silver Plating with Ceramic coat)	GROSS WT. : - Kg	NET WT. : 0.0192 (-Kg)		
PROJECTION		SCALE: NTS	FINISH\COLOUR :	SURFACE AREA: cm <sup>2</sup>		
		DEV DRG NO:	QTY/ASSY : 2	PARENT ASSLY :		
HAVELLS INDIA LTD. Centre for Research & Innovation (CRI) GRG Towers, 2D, Sector-126 Noida - 201 304 UP (India)		PROJECT: HAIR STRAIGHTENER HS410X	STATE : UNDER DEVELOPMENT			
SUPERSEDES: NA		DRG. NO. : HEATING_PLATE				
TITLE : HEATING PLATE		REV. NO : 00	ISSUE NO :			
SHEET/P&Duct: FORM 20005_S		DATE: 10.10.2023		DRAWN BY: SWARAJ		CHKD BY: S.MADHAW

This drawing is the sole property of HAVELLS INDIA LTD. Unauthorised use of this drawing, Information disclosing, copying, loan, using for sub contracting, Tendering or any other misuse is not permitted.

Do not scale the drawing unless otherwise specified. Remove burrs & sharp corners unless specified.

FILE PATH