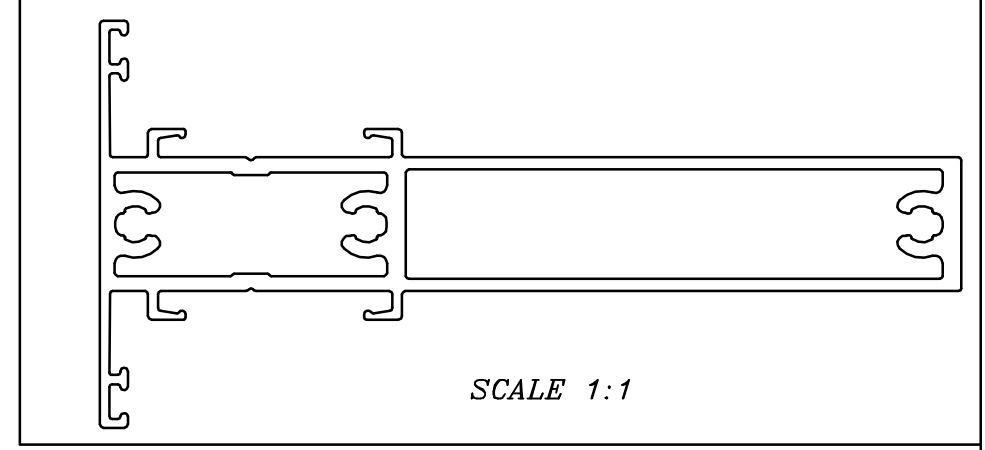
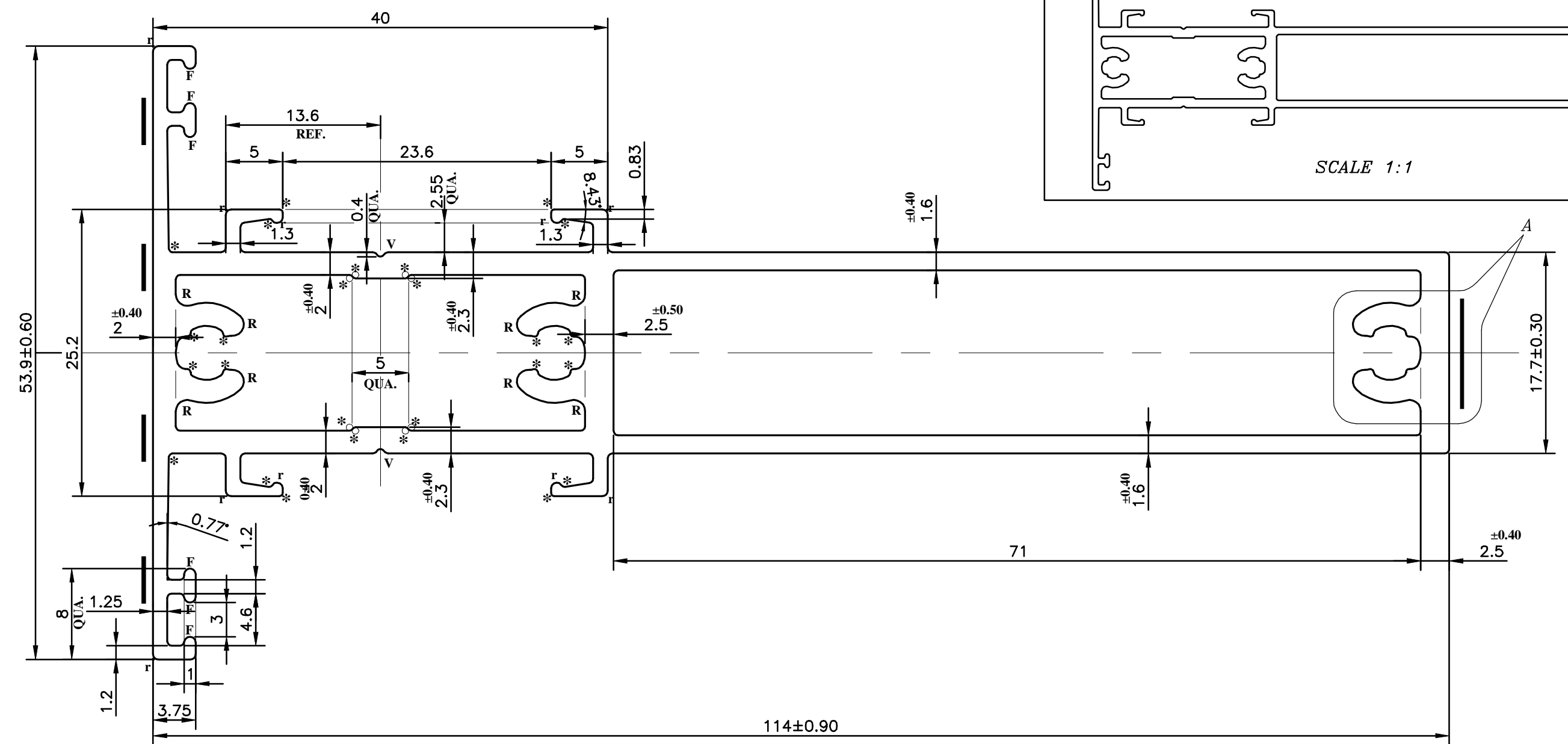


P-26461  
—



SCALE 1:1

114±0.90  
SCALE 2.5:1

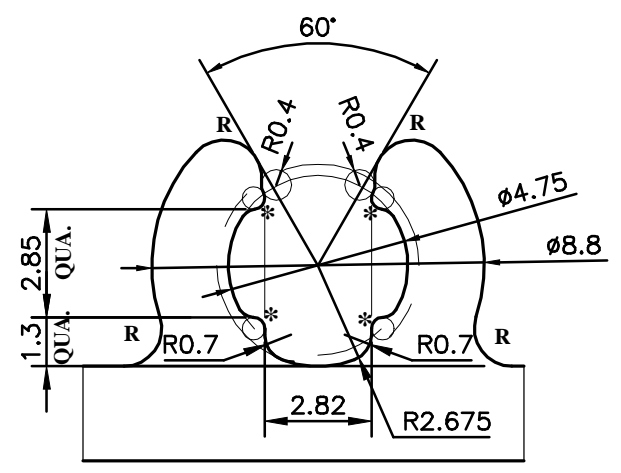
PLEASE NOTE:-  
— DUE TO THICKNESS VARIATION  
IMPRESSION MARK MAY APPEAR  
IN THIS MARKED PORTION.  
HOWEVER WE WILL TRY TO MINIMIZE

UNCONTROLLED COPY

V = V-GROOVE 0.3X90° (2 PLACES)  
\* = RADIUS 0.3mm (22 PLACES)  
r = RADIUS 0.5mm (10 PLACES)  
R = RADIUS 1mm (12 PLACES)  
F = FULL RADIUS (6 PLACES)

1. STRAIGHTNESS= 1.7mm/M
2. TWIST= 1.7mm/M
3. ANGULARITY= ±2°
4. FLATNESS= 0.007xWIDTH

KINDLY PROVIDE THE MATCHING PROFILE



DETAIL OF "A"  
SCALE 5:1

1) THE WELDING LINE IN THE EXPOSED SURFACE OF PROFILE IS UNAVOIDABLE. 2) PLEASE SPECIFY IMPORTANT SIZES. 3) PLEASE SPECIFY IF THIS PROFILE MATCHES WITH OTHER PROFILES. 4) PLEASE SPECIFY EXPOSED SURFACE. OTHERWISE CONSIDERED AS NO EXPOSED SURFACE. 5) FINISH :-  MILL FINISH /  ANODIZING /  POWDER COATING

<p>SYMBOL OF QUALITY AN ISO 9001 COMPANY</p>	<p><b>JINDAL ALUMINIUM LTD.</b> BANGALORE-560073 (INDIA)</p>		NAME	DATE
			DRAWN	ADITYA N 27-11-2023
			CHECKED	
<p>1. ALL DIMENSIONS ARE IN mm. 2. ROUND OFF ALL SHARP CORNERS WITH 0.40 mm. 3. TOLERANCES WILL BE AS PER IS:6477-1983, UNLESS OTHERWISE SPECIFIED</p>			APPROVED	
			SCALE	2.5:1
<p>PARTY'S NAME RG FACADE SOLUTIONS., GHAZIABAD.</p>			AREA mm <sup>2</sup>	678.276
			PERIMETER mm.	416.499
<p>PARTY'S DRAWING No. AS PER AUTOCAD DRAWING</p>			WEIGHT kg/m	1.831
			DRAWING No.	SECTION No.
<p>ALLOY &amp; TEMPER 6063 T6</p>			P-26461	—
			—	—
<p>DESCRIPTION WINDOW SECTION</p>			PRODUCT CODE:-048	
			HSN CODE:-76042100	