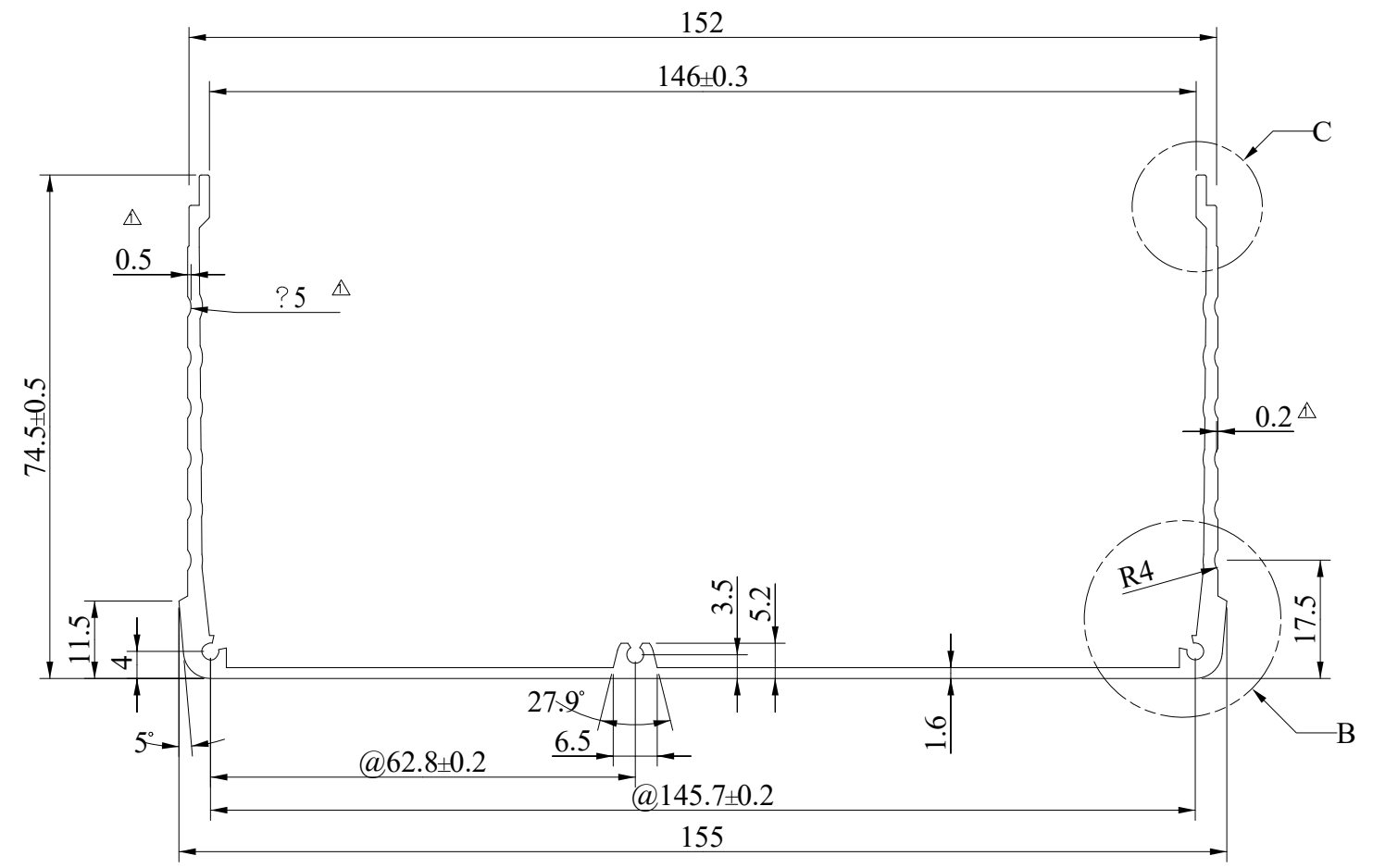
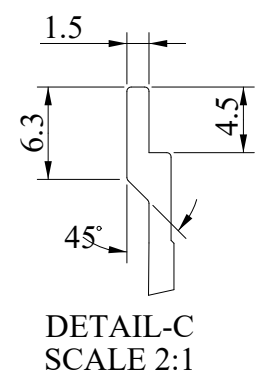
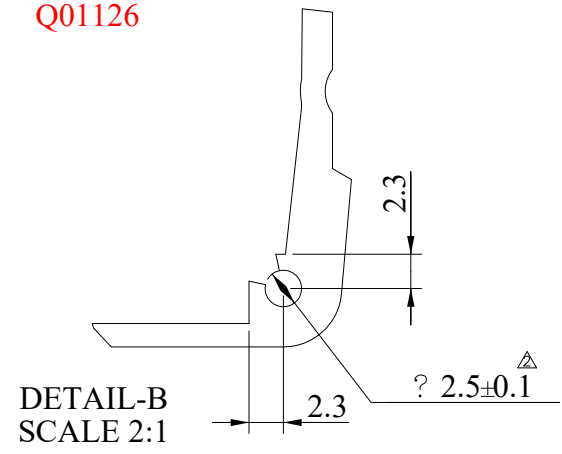


MARK	REV. NO.	DESCRIPTION	REVISED BY	DATE
△	01	SERRATION DIMENSION & CLAMPING	CHINTESH	23.12.2021
△	02	PROFILE CHANGED ALL SCREWING HOLE DIA AND TOLERANCE CHANGED	PAWAN	23.09.2023

Q01126



- NOTE:
1. ALL DIMENSION'S ARE IN mm
  2. RADIUS AT ALL CORNERS 0.2 MINIMUM
  3. CUT LENGTH TOLERANCE ± 5 mm
  4. ALLOY :- 6063
  5. HARDNESS :- VICKERS 83 / BRINELL - 73 / KNOOP - 96
  6. TENSILE STRENGTH :- 241 MPa
  7. DENSITY :- 2.7 gm/cc
  8. TWIST & STRAIGHTNESS = 1.7mm / MTR
  9. FLATNESS = WIDTH x 0.008mm
  10. ANGULARITY = ± 2°
  11. THE DIMENSION @ MARKED SHOULD BE TAKE CARE

SECTION AREA- 579.88 sqmm  
PART WEIGHT : 1565.7 g/M  
± 170

PART CODE :-V420-202-4818

DESIGN	DRAWN	CHECKED	APPROVED	DATE	SCALE	PART MATL. / MATL. CODE	DESIGN WEIGHT	ACTUAL WEIGHT
CHINTESH	CHINTESH	CHINTESH	CHINTESH	23.12.2021	1:1	SEE NOTE	SEE NOTE	---
UNSPECIFIED TOLERANCE	OVER 4 UNDER	OVER 16 UNDER	OVER 63 UNDER	OVER 250	ANGLE	UNSPECIFIED DRAFT ANGLE	SPECIFICATION NO.	SP.MS.VPT-003
UNSPECIFIED	UNSPECIFIED	UNSPECIFIED	UNSPECIFIED	UNSPECIFIED	UNSPECIFIED	UNSPECIFIED	UNSPECIFIED	UNSPECIFIED
ALL DIMENSIONS ARE IN mm UNLESS OTHERWISE SPECIFIED						PART NAME	SECTION BOTTOM ALS002	DRG. NO.
DO NOT SCALE THE DRG.						PART NAME	E-RICKSHAW MITRA SERIES V2	VPT-CHR-ALS-002
FORMAT NO. PK/MECH/0101							SHEET 01 OF 04	
VOLTSMAN POWER TECHNOLOGIES PVT. LTD. A5, Mangolpuri Indl Area Phase-2, New Delhi-110034							SHEET 01 OF 04	