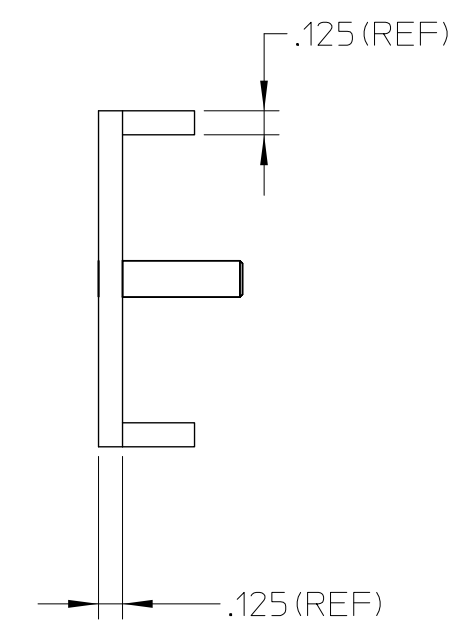
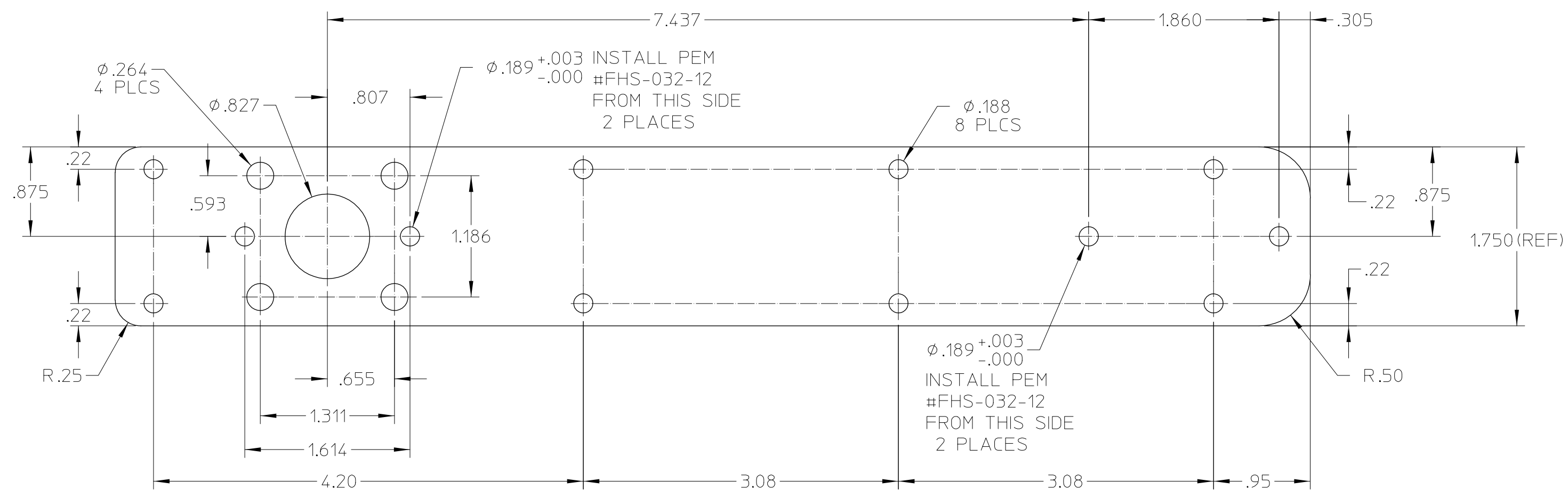
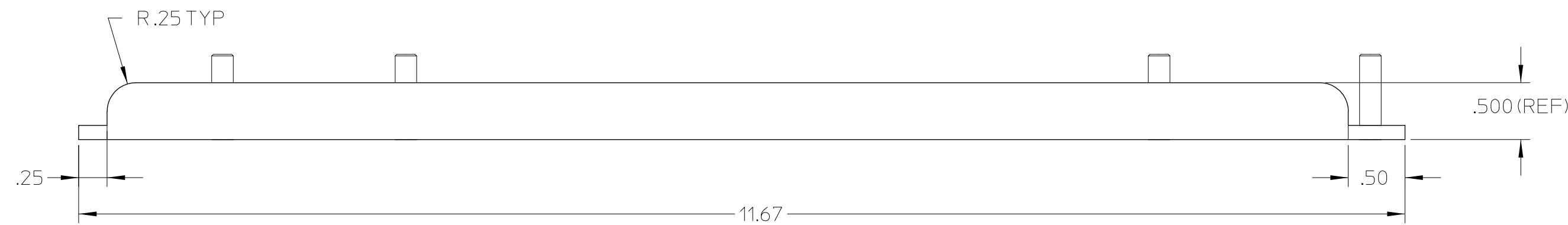
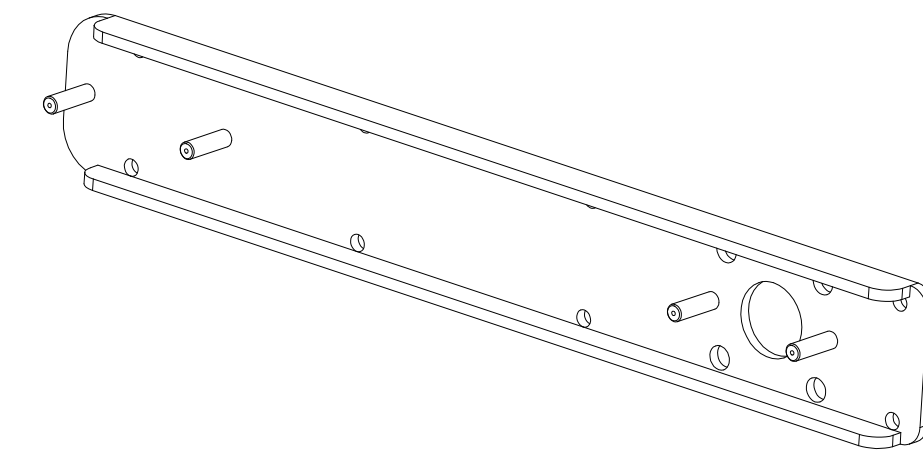


REV	DATE	BY	DESCRIPTION OF CHANGE
B	11/17/06	CIL	ADDED CALLOUT FOR PEMS
C	3/4/09	JCB	REMOVE MINALEX & ENHANCE MATL SPEC
D	12/1/09	SCJ	CHANGED TITLE BLOCK ADD ROHS NOTE



MATERIAL

EQUAL LEG CHANNEL EXTRUSION
 1.750 X .500 X .125 WALL (ASTM B221)
 6063-T6 OR 6063-T52 ALUMINUM

PART NO
9881-138

THIS DRAWING REPRESENTS A PROPRIETARY PRODUCT OF LI-COR INC. LINCOLN, NEBRASKA, AND SHALL NOT BE RELEASED NOR BE DISCLOSED, USED, OR DUPLICATED WITHOUT THE WRITTEN PERMISSION OF LI-COR INC.

FINISHED COMPONENT SHALL BE ROHS COMPLIANT PER DWG NO 26-10644 REMOVE ALL BURRS AND SHARP EDGES UNLESS NOTED THIRD ANGLE PROJECTION	UNLESS NOTED DIMENSIONS ARE IN INCHES TOLERANCES UNLESS NOTED FRACT ±1/64 X ±.015 .XX ±.010 .XXX ±.005 .XXXX ±.0005 ANGLES ±5°	NOTE: THIS DRAWING PREPARED IN ACCORDANCE WITH ANSI Y14.5M-1994 ARC Machine Tools Pvt Ltd Plot no-33, Sector-58, Faridabad
	SCALE 1:1 DATE 06/21/05	TITLE SUPPORT ARM DRN BY MAJ RLS DATE 10/12/06