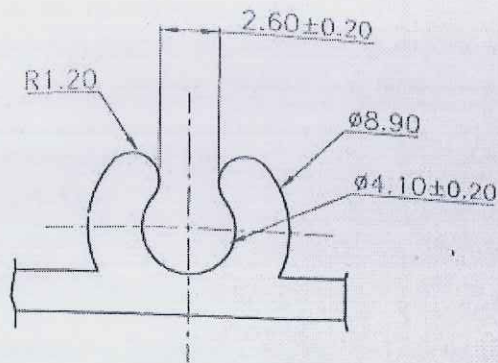
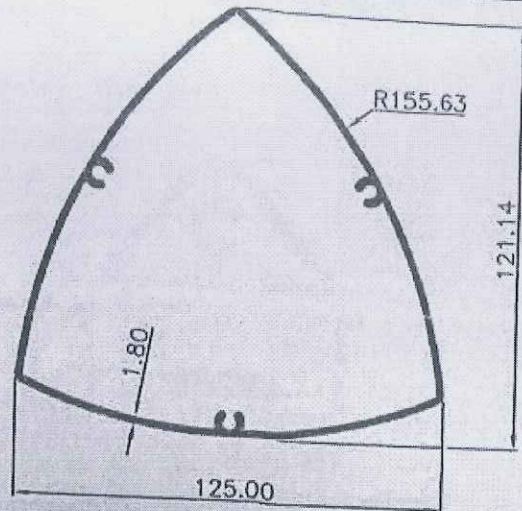


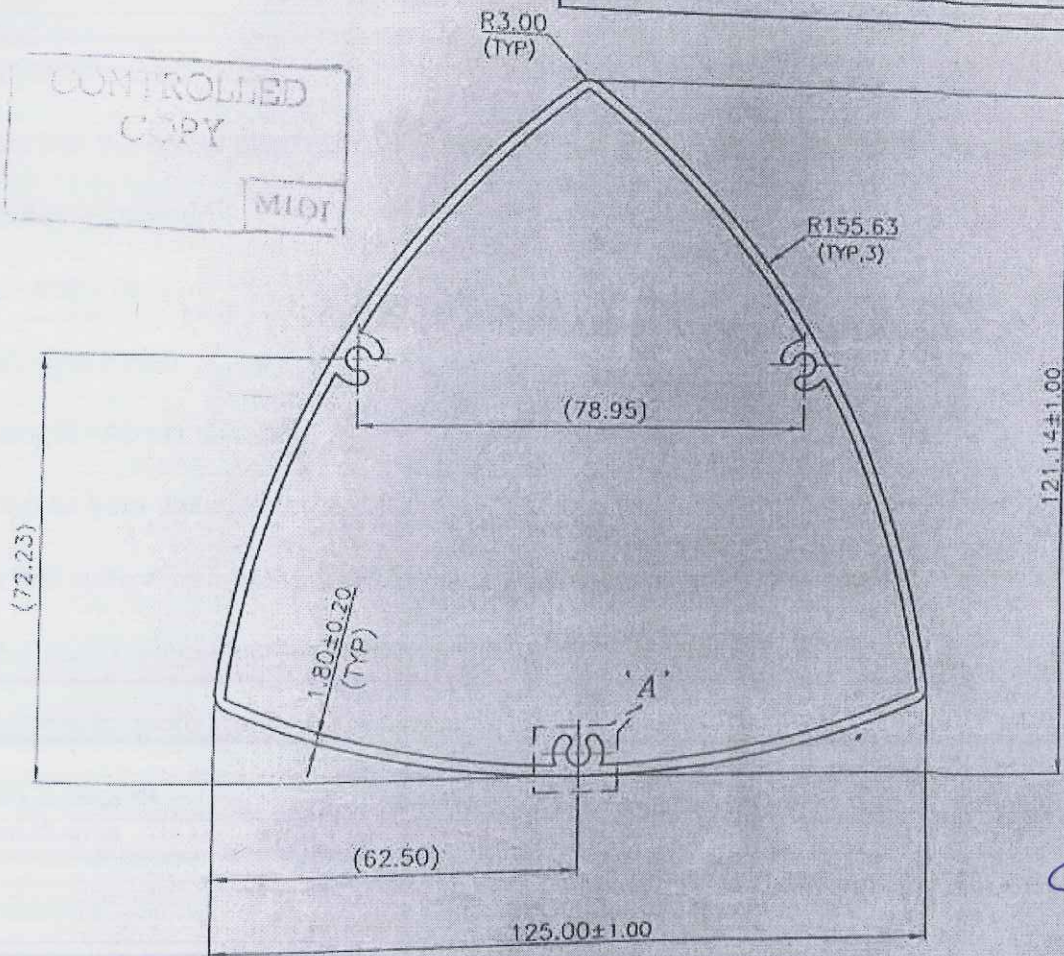
SEC.NO: 302111



DETAIL-'A'



CONTROLLED COPY
MIDI



Q02362

NOTES:-(i) ALL DIMENSIONS - IN mm (ii) UNSPECIFIED CORNER RADIUS-0.3mm (iii) DIMENSIONS IN BRACKETS ARE NOT MEASURABLE & ARE FOR REFERENCE ONLY (iv) OPEN TOLERANCES WILL NOT APPLY ON 'RESULTANT DIMENSIONS'

OPEN TOLERANCES UNLESS OTHERWISE SPECIFIED.					
LINEAR DIMENSION					
DIM.	<6	6.1-30	30.1-50	50.1-100	>100
TOL	±0.2	±0.3	±0.45	±0.7	±1% OF DIM
DIAMETER					
DIA	<20	20.1-30	30.1-40	40.1-50	>50
TOL	±0.5	±0.6	±0.8	±0.85	±1% OF DIA
WALL THICKNESS					
DIM.	1-2	2.1-4	4.1-6	6.1-8	>8
TOL	±0.3	±0.45	±0.6	±0.75	±0.9
FLATNESS	±0.007 mm/mm. of Width				
STRAIGHTNESS	±1.7 mm/m of Length				
ANGULARITY	± 2'				
TWIST	±1.7 mm/m of Length				

MIDI EXTRUSIONS LTD.

DRAWN BY	<i>K. S. H.</i>	REF. NO.	107
CHECKED BY	<i>K. S. H.</i>	AREA	761.878 mm ²
AUTHENTICATED BY	<i>K. S. H.</i>	ESTD. WEIGHT	2.057 Kg/m
SCALE USED	0.5:1, 3:1, 0.8:1	PERIMETER	00=385.611 mm ID=432.506 mm
CRITICAL DIM.	NIL	ALLOY & TEMPER	6063 T6
DATE	21/08/10	DF	397.7
CCD	143.4	ER	57.4
M= [PR-25/1]		DRG. NO.	10082101