

φ 01223

ALLOY - 6082 T6

PUMP BODY PART

AC MOTOR BODY

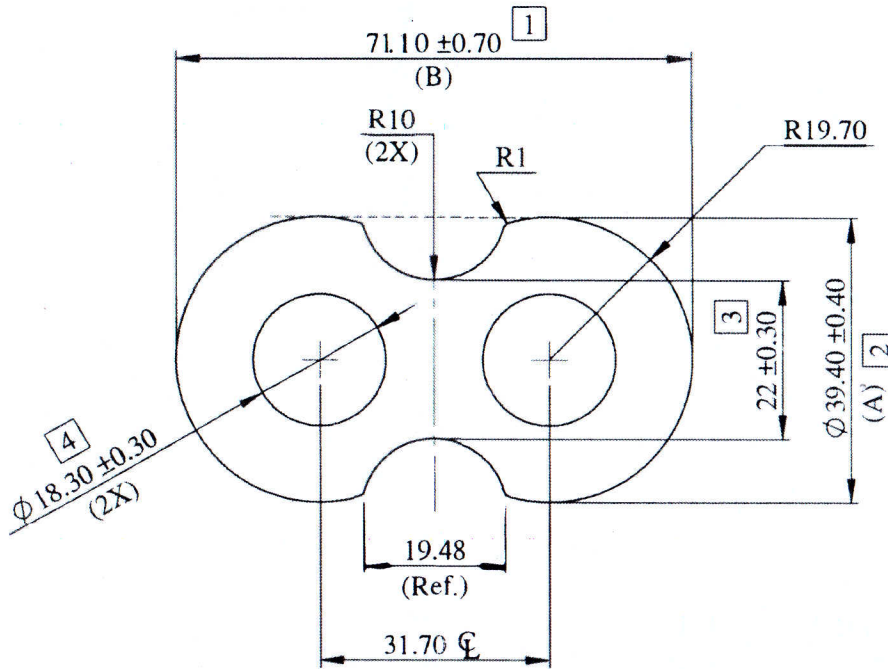
PROPOSED DRAWING

DIAMOND

90 to 95 BHN

8/01/24

HARDNESS = 105 BHN (TYPICAL)



JALBEC-010-27138

LOCATION:-P4-1HOLE  
ALL DIMENSION ARE IN mm.  
UNSPECIFIED CORNER RADIUS:0.40

PLEASE SPECIFY THE EXPOSED SURFACE

TOL. AS PER BS EN 755-9:2008  
UNLESS SPECIFIED

TWIST = ±1/4°/300 M.M.  
FLATNESS = WIDTH X 0.005mm.  
STRAIGHTNESS = 1.50 M.M./MTR.  
ANGULARITY = ±1.5°

JINDAL ALUMINIUM LIMITED BHIWADI RAJASTHAN - 301019

PARTY SAMPLE & ORG.		SAMPLE-6	PARTY NAME		M/S DIAMOND MFG.	REF:- AS PER PARTY DISC.- 18.12.17		
				DRAWN	VIVEK YADAV	23.12.17	AREA	1672.20 mm <sup>2</sup>
				CHECKED	Spr		WEIGHT	4.515 KG/M.
001	(B)	Dim. 71.10 was 70.70	Spr	APPROVED	01/1/24		WT. RANGE	----- Kg/12
	(A)	Dim. 39.40 was 39.00		SCALE	1:1	DATE	ALLOY	6082-T6
	(REF.)	As per party disc on dt.- 25.08.18		CRITICAL DIM.	*		MAL NO	16786
REV. STATUS	REV. NO.	DESCRIPTION	SIGN DATE	PERIMETER	INT.	114.98	SEC.NO.	D-7101
44		REVISION			EXT.	201.92		