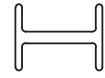
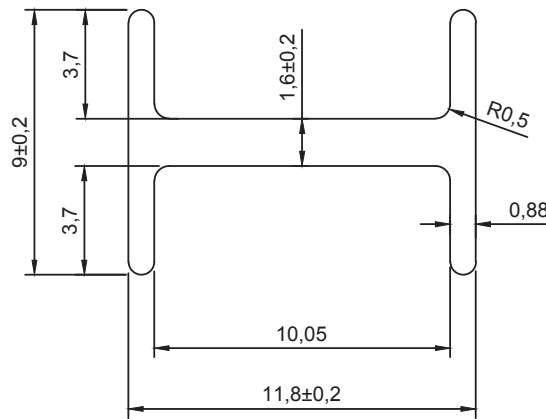


REF NO: B-30



SCALE: 1:1



OK
7/2/22

CODE : SEW/STA/S1/535
REV : 00 / Dt : 28.01

NOTE:- ALL DIMENSIONS ARE IN mm.

UNSPECIFIED RADIUS:-0.50

WITH DIN ISO 2768-1 class C = Coarse		6 - 30	30-120	120-400	400-1000
Dimension	0.5 - 3	±0.3	±0.5	±0.8	±2.0
Longitudinal	±0.2				
chamfer & radius	0.5 - 3	±1.0	±2.0	±0.8	
Degrees & Minutes	at 10	±1°	±0°30'	±0°15'	over 400 ±0°10'

AREA: 31.716 Sqmm [^]	ALLOY/TEMPER:-	DRAWN BY: RAJE
PERIMETER: 54.039	FLATNESS:-±0.8mm [^]	DATE: 28/01/2022
WEIGHT: 0.313 Kg/12'	TOLERANCES:	REVISION:-
DESCRIPTION :	ANGULARITY:	CHECKED BY:-
PARTY DRG NO:	straightness:	APPROVED BY:-
SECTION NO:	TWIST:-1.70mm/meter	SCALE:- 4:1