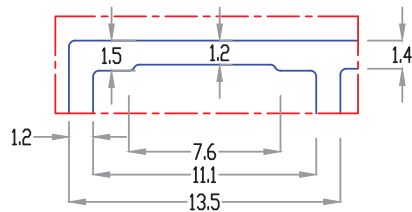
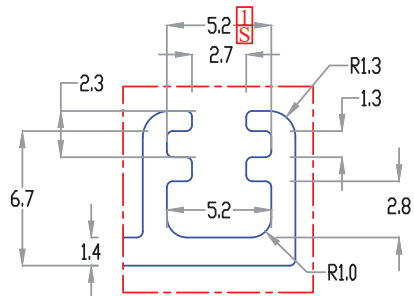


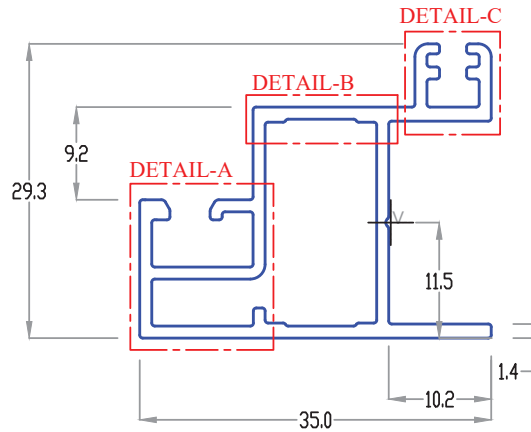
DETAIL-A  
SCALE 4 : 1



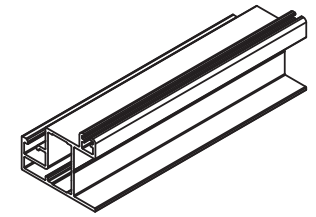
DETAIL-B  
SCALE 4 : 1



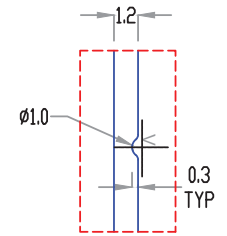
DETAIL-C  
SCALE 4 : 1



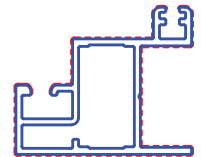
SCALE 2 : 1



Isometric View



V-GROOVE  
SCALE 4 : 1



Powder Coated Area

Surface Area (mm <sup>2</sup> )	Weight (Kg/m)	Total Area (m <sup>2</sup> )	Powder Coated Area (m <sup>2</sup> )
178.518	0.482	0.192	0.146
MATERIAL ALUMINIUM 6063 T6			
DENSITY 2700 kg/m <sup>3</sup>			
UNSPECIFIED CORNER RAD. 0.3mm			
STRAIGHTNESS As per EN12020 : (±3mm, 5m<L<6m)			
ANGULARITY ± 1° (EN12020)			
FLATNESS TOL. ±0.8mm			
TWIST TOL. 1.0mm/m (EN12020)			
SIGNIFICANT CHARACTERISTICS 2			
SURFACE FINISH: POWDER COATING (60 to 80µm Thk.)			
FINISH AREA: 0.364(m <sup>2</sup> )			
SCALE 1:1		Description:- <b>BUGSASH INTERLOCK</b> (PR 35X29_MS_INT_SH MF AL AS23PS07)	
Format A3		Drawing No :- AS23PS07	

V - GROOVE  
REF - REFERENCE DIMENSION  
TYP - TYPICAL DIMENSION

Notes:-

- A. Extrusion :
  - a. Part must be clean and free from tool marks.
  - b. No Waviness, Pitting, Bending acceptable on part.
  - c. Parts must be free from internal cracks.
- B. Part must be free from powder coating defect like Pitting, Blow holes, inclusion etc.
- C. Part must be same as engineering approved sample.

FOR CONSULTATION ONLY

REV	Date	Prepared by:	Approved By:	Description
R1	22/12/2023	RITESH SRIVASTAVA	VIVEK GUPTA	DESIGN CHANGED

All dimension are in mm.

Unspecified general tol: EN 12020-2

From 0 mm to 10 mm	± 0.15mm	From 45 mm to 60 mm	± 0.40
From 10 mm to 15 mm	± 0.20mm	From 60 mm to 90 mm	± 0.45
From 15 mm to 30 mm	± 0.25mm	From 90 mm to 120 mm	± 0.60
From 30 mm to 45 mm	± 0.30mm	From 120 mm to 150 mm	± 0.80

CONFIDENTIAL - EXCLUSIVE PROPERTY OF FENESTA BUILDING SYSTEM

DATE	FENESTA BUILDING SYSTEMS		Sheet
27-11-2023			1 of 1
Prepared by:	Checked by:	1st Approver:	2nd Approver:
RITESH SRIVASTAVA	VIVEK GUPTA	Y.P SINGH	Rev. R1