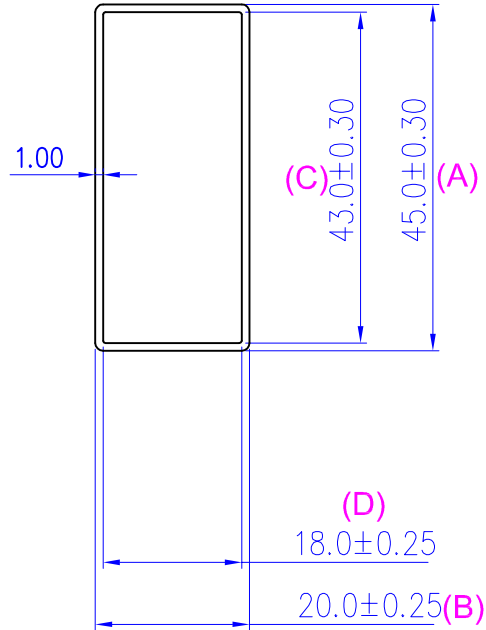


WHERE USED
PWB600


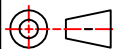
CTQ CHECK POINTS

CHG.NO.	REV	REVISION	DRAWN	DATE



INCOMING INSPECTION:-

- (A) DIA. = 44.70 TO 45.30 - V.C
- (B) DIM. = 19.75 TO 20.25 - V.C
- (C) DIM. = 42.70 TO 43.30 - V.C
- (D) DIM. = 17.75 TO 18.25 - V.C
- (E) NO ANODIZING DEFECTS. - VISUAL

MAT'L: Aluminium 6063T6	SCALE: - NTS	DATE:	 CSTech <small>COMPLETE SURVEYING TECHNOLOGIES</small>	
FINISH: -Anodized	DRN. BY: - Aman	11/10/10		
TOLERANCES UNLESS OTHERWISE SPECIFIED. .X = $\pm 0.2\text{mm}$.XX = $\pm 0.1\text{mm}$.XXX = $\pm 0.05\text{mm}$ ANGULAR = $\pm 1^\circ$ NOTE: - BREAK ALL SHARP CORNERS.	CKD. BY:-		PART NAME: - 0140 Short Leg Extrusion 45x20mm.	
	APD. BY:-			
UNITS: MM		CODE: - PWB	DRAWING NO. PWB - 0140/E	REV C