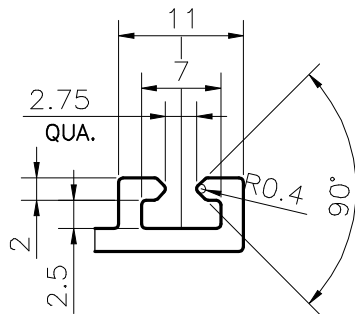
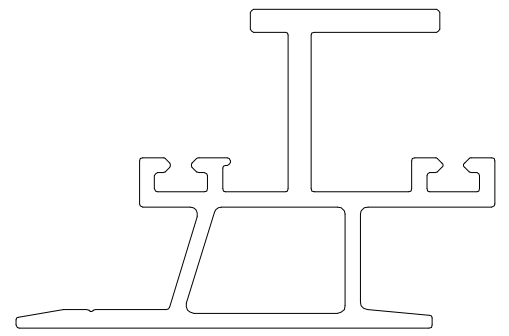


P-25295

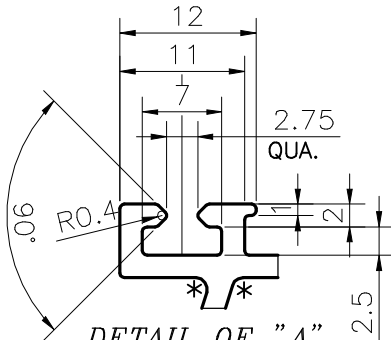
I



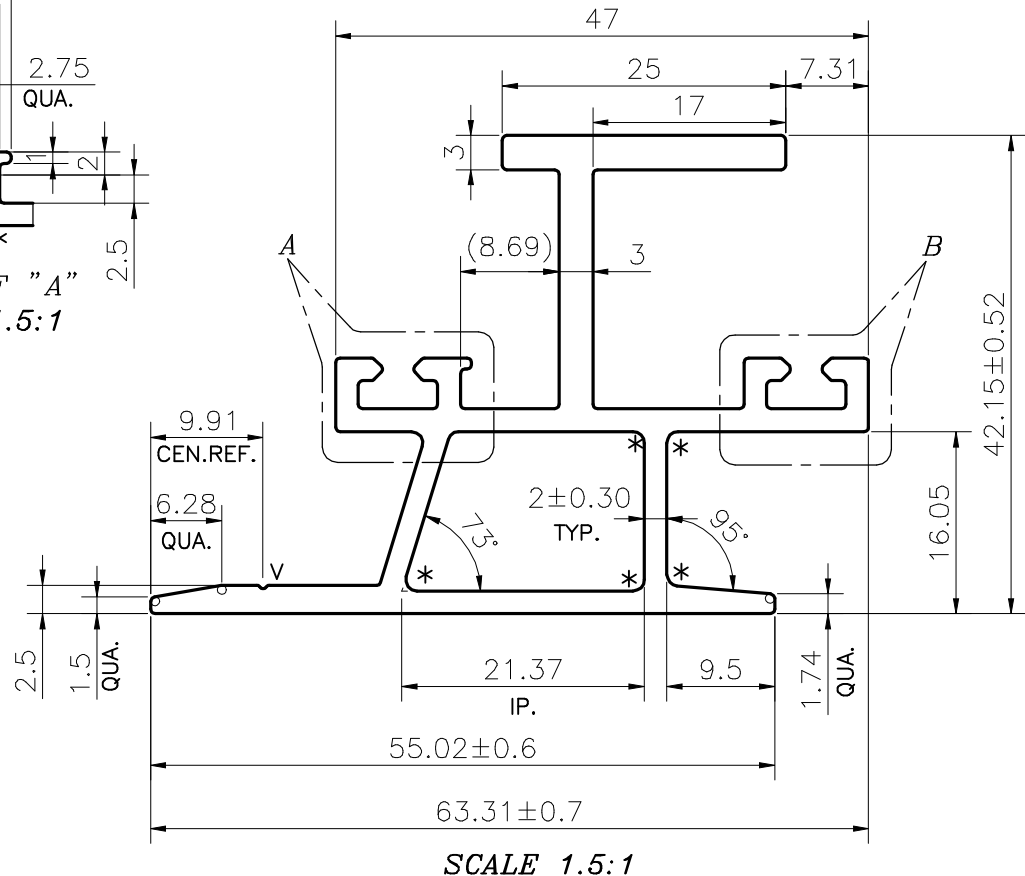
DETAIL OF "B"
SCALE 1.5:1



SCALE 1:1



DETAIL OF "A"
SCALE 1.5:1



SCALE 1.5:1

Q04058

CUSTOMER REQUIRE THIS FROM BHIWADI PLANT

V = V-groove 0.3X90° (1 PLACE)

* = RADIUS 1mm (7 PLACES)

1. STRAIGHTNESS= 1.7mm/M
2. TWIST= 1.7mm/M
3. ANGULARITY= $\pm 2^\circ$
4. FLATNESS= 0.007xWIDTH

1) THE WELDING LINE IN THE EXPOSED SURFACE OF PROFILE IS UNAVOIDABLE. 2) PLEASE SPECIFY IMPORTANT SIZES. 3) PLEASE SPECIFY IF THIS PROFILE MATCHES WITH OTHER PROFILES. 4) PLEASE SPECIFY EXPOSED SURFACE. OTHERWISE CONSIDERED AS NO EXPOSED SURFACE. 5) FINISH :- ☐ MILL FINISH / ☐ ANODIZING / ☐ POWDER COATING



SYMBOL OF QUALITY
AN ISO 9001 COMPANY

JINDAL ALUMINIUM LTD.
BANGALORE-560073 (INDIA)

	NAME	DATE
DRAWN	ADITYA N	29-04-2023
CHECKED		
APPROVED		
SCALE	1.5:1	
AREA mm ²	460.518	
PERIMETER mm.	328.963	
WEIGHT kg/m	1.243	
DRAWING No.	SECTION No.	
P-25295	-	
-	-	

1. ALL DIMENSIONS ARE IN mm.
2. ROUND OFF ALL SHARP CORNERS WITH 0.40 mm.
3. TOLERANCES WILL BE AS PER IS:6477-1983, UNLESS OTHERWISE SPECIFIED

PARTY'S NAME	NEW ERA INDUSTRIES.,NEW DELHI	
PARTY'S DRAWING No.	AS PER DRAWING	
ALLOY & TEMPER	6063 T6	PRODUCT CODE:-085 HSN CODE:-76042100
DESCRIPTION	CLAMP SECTION-MIDDLE	