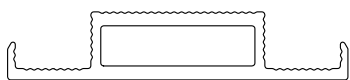
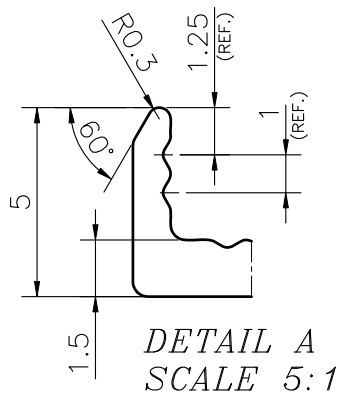
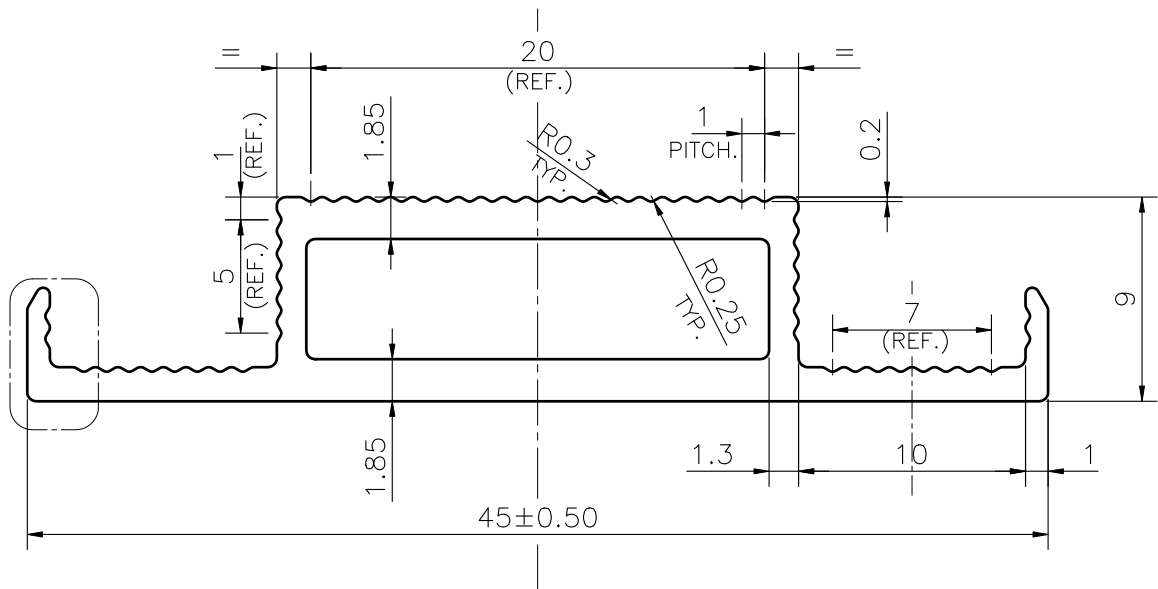



-		 SCALE 1:1
-		

Q04069



XXXXXX		1. STRAIGHTNESS= 1.7mm/M 2. TWIST= 1.7mm/M 3. ANGULARITY= $\pm 2^\circ$ 4. FLATNESS= 0.007xWIDTH
UNCONTROLLED COPY		

1) THE WELDING LINE IN THE EXPOSED SURFACE OF PROFILE IS UNAVOIDABLE. 2) PLEASE SPECIFY IMPORTANT SIZES. 3) PLEASE SPECIFY IF THIS PROFILE MATCHES WITH OTHER PROFILES. 4) PLEASE SPECIFY EXPOSED SURFACE. OTHER WISE CONSIDERED AS NO EXPOSED SURFACE. 5) FINISH :- ☐ MILL FINISH / ☐ ANODIZING / ☐ POWDER COATING

 SYMBOL OF QUALITY AN ISO 9001 COMPANY	JINDAL ALUMINIUM LTD. BHIWADI-301019 (INDIA)		NAME		DATE
			DRAWN		ASHUTOSH 05-09-2025
			CHECKED		
1. ALL DIMENSIONS ARE IN mm. 2. ROUND OFF ALL SHARP CORNERS WITH 0.40 mm. 3. TOLERANCES WILL BE AS PER BS:EN-755-9 , UNLESS OTHERWISE SPECIFIED			APPROVED		
			SCALE		3:1
			AREA mm ²		133.308
PARTY'S NAME			PERIMETER mm.		124.401
			WEIGHT kg/m		0.360
PARTY'S DRAWING No.			DRAWING No.		SECTION No.
			-		-
ALLOY & TEMPER			-		-
DESCRIPTION			PRODUCT CODE:-048		
			HSN CODE:- 76042100		