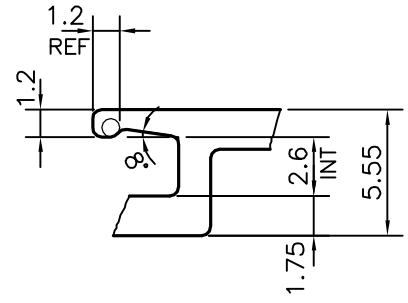
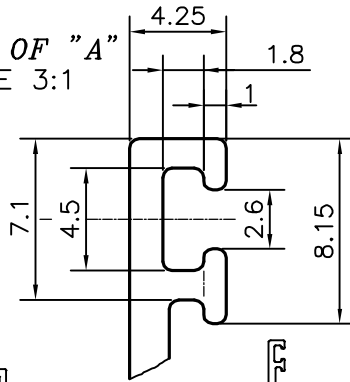


P-20511

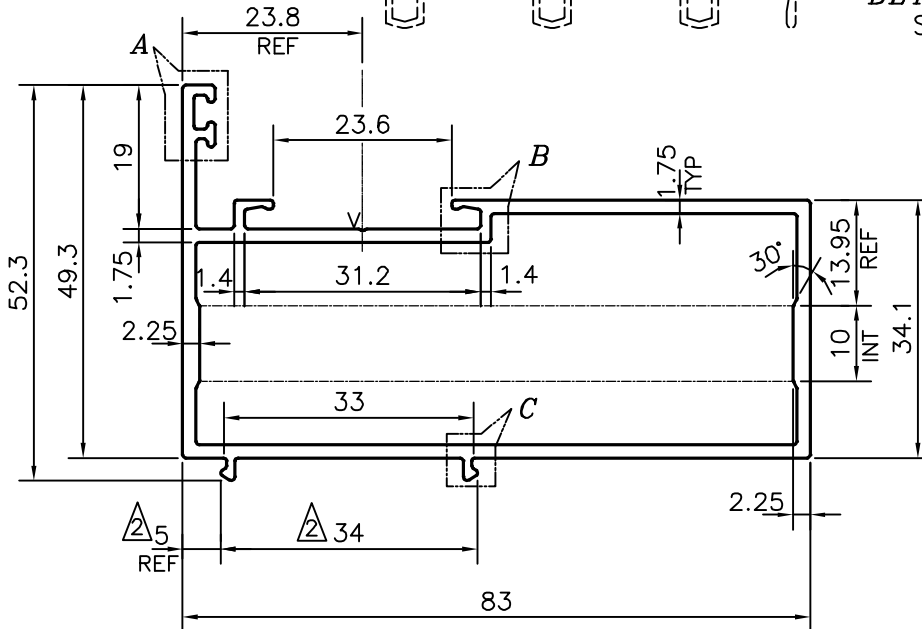
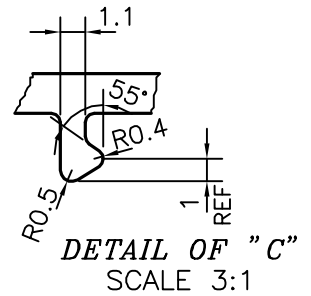
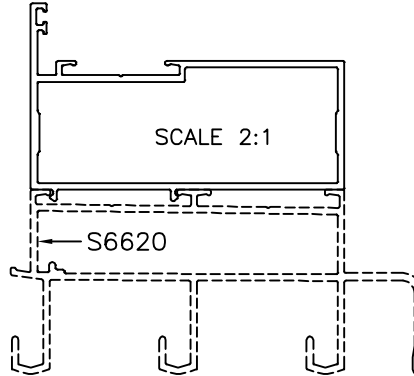
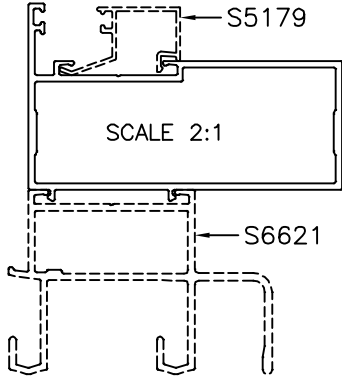
S6622

PLEASE QUOTE FOR 3MM THICKNESS

DETAIL OF "A"  
SCALE 3:1



DETAIL OF "B"  
SCALE 3:1



ISSUE- $\Delta$

DIMENSION CHANGED FROM 34.6 mm TO 34.0 mm & FROM 4.7 TO 5.0 mm AS PER PARTY'S REQUIREMENT FOR CORRECT FITMENT.

V = V GROOVE 0.3x90°(1 PLACE)

TOLERANCES ON OVERALL DIMENSIONS OF HOLLOW SECTIONS

|                     |                      |                      |   |
|---------------------|----------------------|----------------------|---|
| UPTO 20.0mm - ±0.30 | UPTO 80.0mm - ±0.70  | UPTO 180.0mm - ±1.27 | 1. STRAIGHTNESS=1.7mm/M<br>2. TWIST=1.7mm/M<br>3. ANGULARITY= ±2°<br>4. FLATNESS =0.006xWIDTH |
| UPTO 30.0mm - ±0.38 | UPTO 100.0mm - ±0.80 | UPTO 200.0mm - ±1.40 |   |
| UPTO 40.0mm - ±0.45 | UPTO 120.0mm - ±0.90 | UPTO 225.0mm - ±1.52 |   |
| UPTO 50.0mm - ±0.52 | UPTO 140.0mm - ±1.00 |                      |   |
| UPTO 60.0mm - ±0.60 | UPTO 160.0mm - ±1.14 |                      |   |



SYMBOL OF QUALITY  
AN ISO 9001 COMPANY

**JINDAL ALUMINIUM LTD.**  
BANGALORE-560073 (INDIA)

|                      | NAME           | DATE       |
|----------------------|----------------|------------|
| DRAWN                | J.P.KAUSHIK    | 13-03-2020 |
| CHECKED              |                |            |
| APPROVED             | B.NATARAJA     | 21-03-2020 |
| SCALE                |                | 1:1        |
| AREA mm <sup>2</sup> |                | 469.763    |
| PERIMETER mm.        |                | 319.216    |
| WEIGHT kg/m          |                | 1.268      |
| DRAWING No.          | SECTION No.    |            |
| P-20511              | -              |            |
| S6622                | S6622(ISSUE-2) |            |

1. ALL DIMENSIONS ARE IN mm.
2. ROUND OFF ALL SHARP CORNERS WITH 0.40 mm.
3. TOLERANCES WILL BE AS PER IS:6477-1983 , UNLESS OTHERWISE SPECIFIED

|                     |                                    |
|---------------------|------------------------------------|
| PARTY'S NAME        | DEO LEELA FACADE SYSTEMS LLP, PUNE |
| PARTY'S DRAWING No. | DLFS-008                           |
| ALLOY & TEMPER      | 6063 T6                            |
| DESCRIPTION         | WINDOW SECTION-OUTER FRAME         |