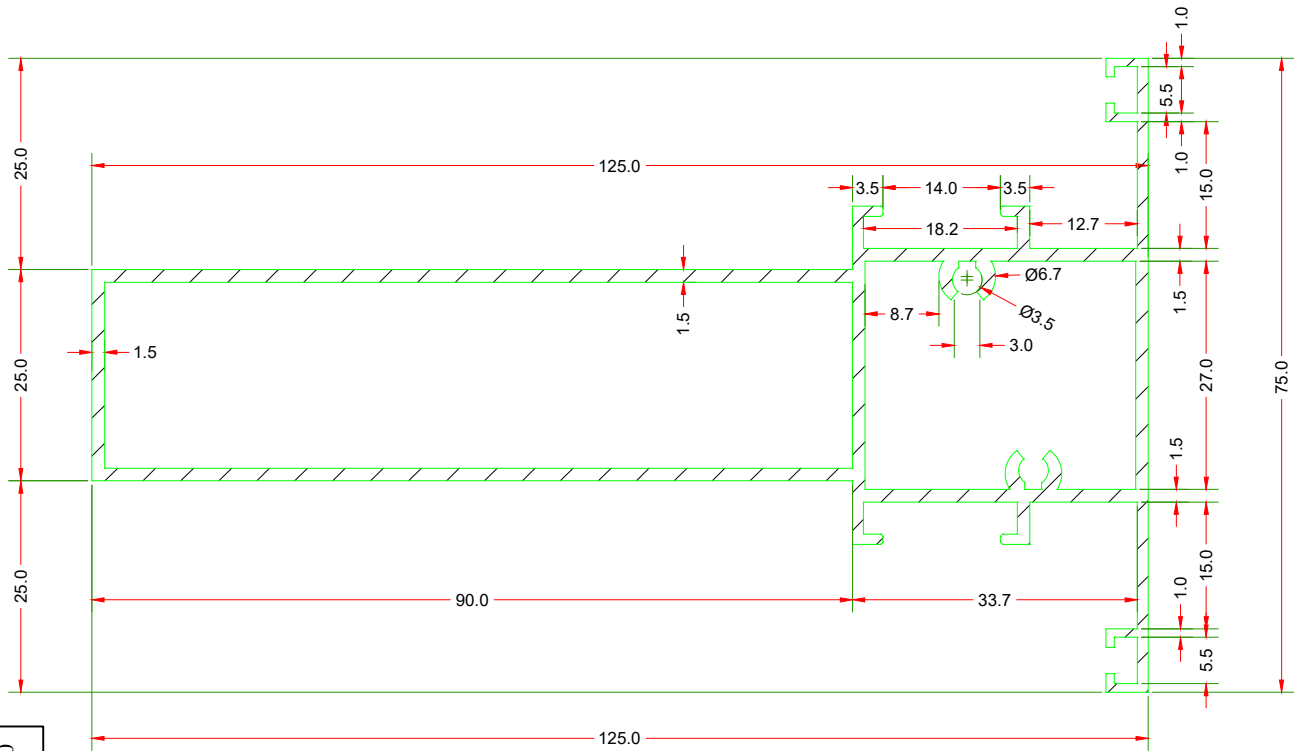
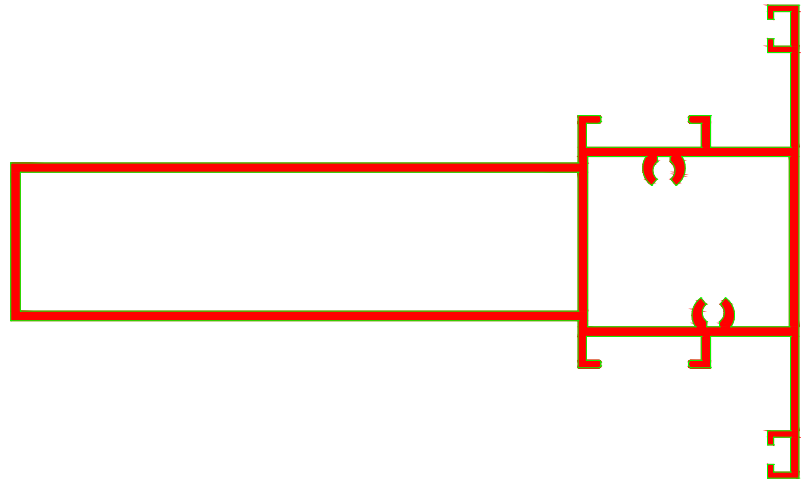


Q02557



WT.= 1.712 KG/M

NOTE:- ALL DIMENSIONS ARE IN mm.

UNSPECIFIED RADIUS:-0.50

UNSPECIFIED TOLERANCES WILL BE IN ACCORDANCE WITH DIN ISO 2768-1 class C = Coarse

DIMENSION LONGITUDINAL	0.5 - 3 ± 0.2	3 - 6 ± 0.3	6 - 30 ± 0.5	30 - 120 ± 0.8	120 - 400 ± 1.2	400 - 1000 ± 2.0
CHAMFER & RADIUS	0.5 - 3 ± 0.4	3 - 6 ± 1.0	6 - 30 ± 2.0	30 - 120 ± 2.8	120 - 400 ± 0°15°	over 400 ± 0°10°
DEGREES & MINUTES	at 10 ± 1°30'	10 - 50 ± 1°	50 - 120 ± 0°30'	120 - 400 ± 0°15°	over 400 ± 0°10°	



PADMAWATI EXTRUSION PVT LTD

AREA: 634.175 Sqmm [^]	ALLOY/TEMPER:-	DRAWN BY: OM
PERIMETER: 868.919 mm	FLATNESS:-±0.92mm [^]	DATE: 02/03/2024
WEIGHT: 1.712 Kg/mtr	TOLERANCES:	REVISION: 00
PARTY REF NO:	ANGULARITY:-±2°	CHECKED BY:
PARTY NAME:	STRAIGHTNESS:-1.70meter	APPROVED BY:-
SECTION NO: P74391	TWIST:-1.70mm/meter	SCALE: 1:1