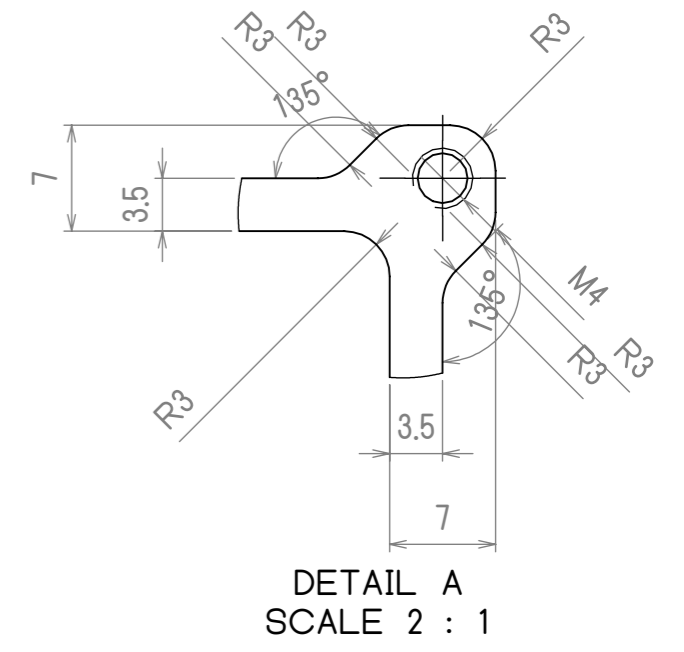
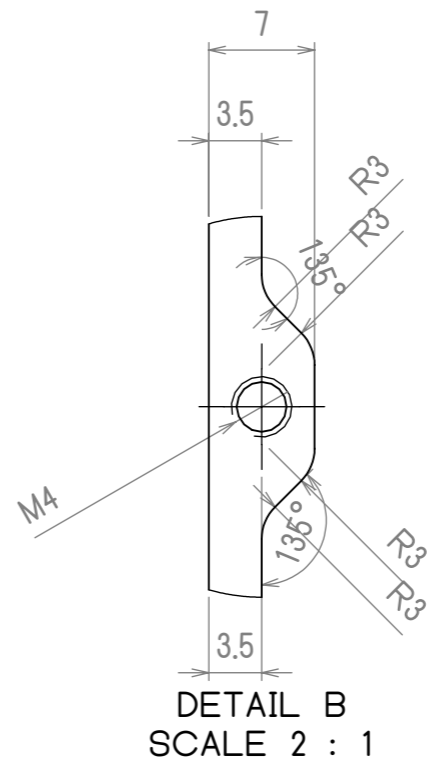
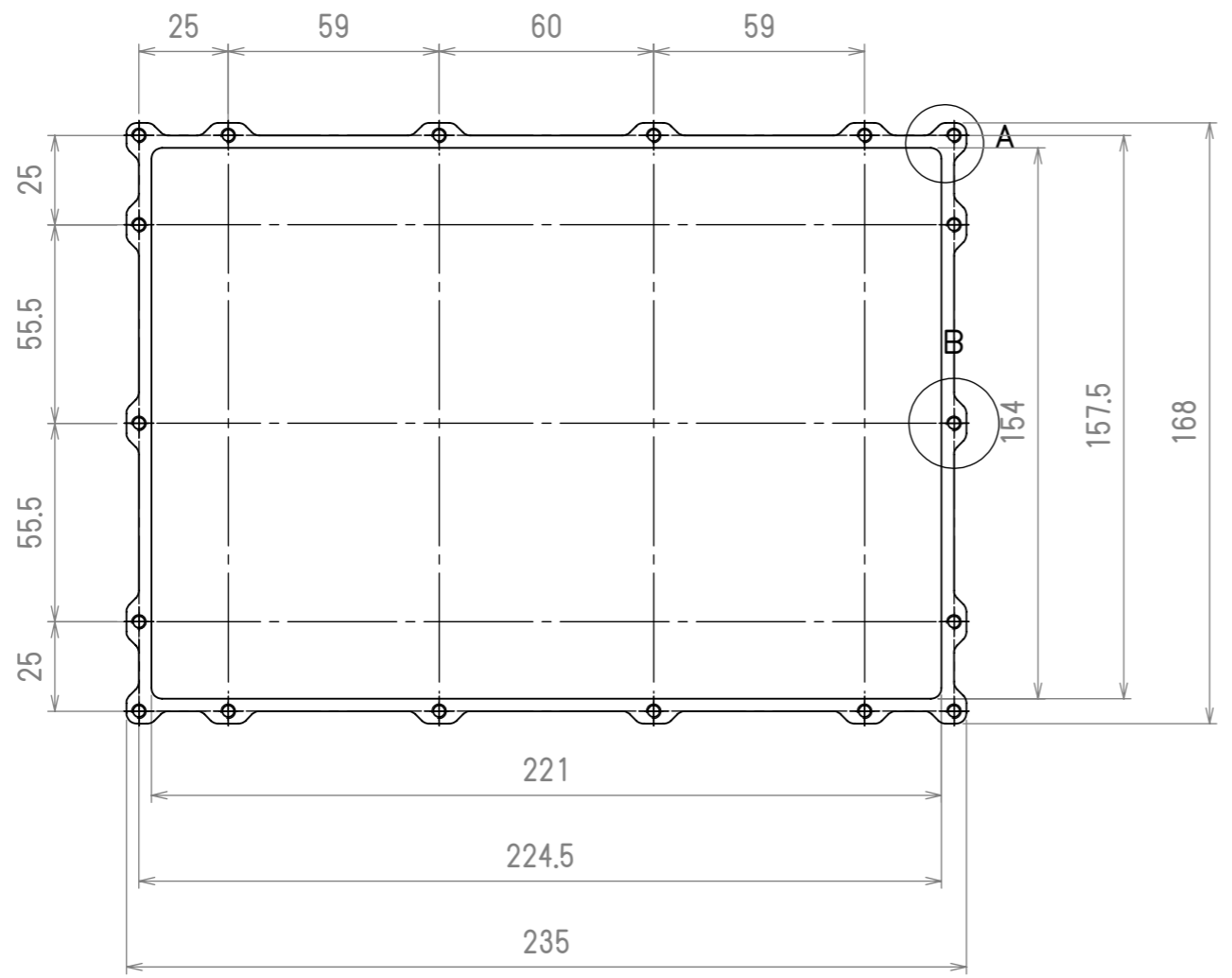


REVISIONS				
ZONE	REV.	DESCRIPTION	DATE	APPROVED



Note: This drawing is for fesability check only

- NOTES:  
1. FOR ALL UNSPECIFIED FEATURES TOLERANCE EN 755-9:2001 STANDARD HAS TO BE FOLLOWED.

ALL DIMENSIONS ARE IN MILLIMETERS	FINISH	COATING THICKNESS	DO NOT SCALE DRAWING	REVISION	00.00
DEBURR AND BREAK SHARP EDGES	COATING	microns	PROPRIETARY AND CONFIDENTIAL <small>THE INFORMATION CONTAINED IN THIS DRAWING IS THE SOLE PROPERTY OF INVERTED. ANY REPRODUCTION IN PART OR AS A WHOLE WITHOUT THE WRITTEN PERMISSION OF INVERTED IS PROHIBITED.</small>		
DRAWN	NAME	SIGNATURE	DATE	TITLE <b>Aluminium Extrusion 5145 BS</b>	
CHK'D				PART NO. <b>Extrusion 5145</b>	
APPVD				MATERIAL <b>6063-T6</b>	
MFG				WEIGHT <b>9266.16 gms/m</b>	
QA				A3	
			HARDENING	SHEET 1 OF 1	