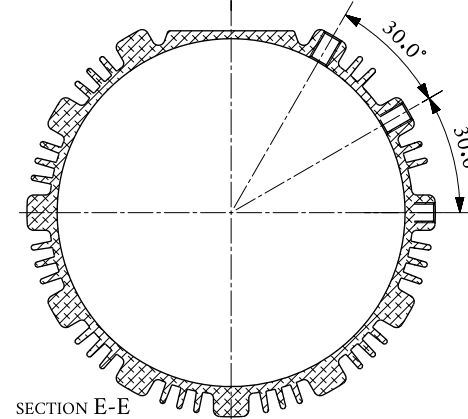
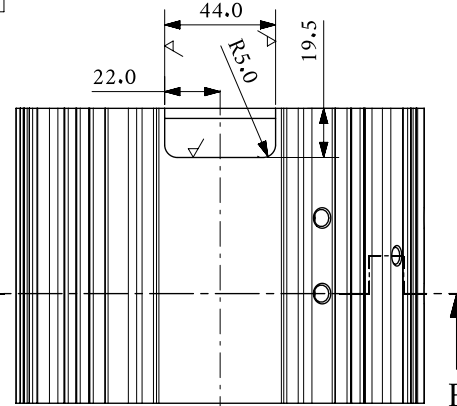
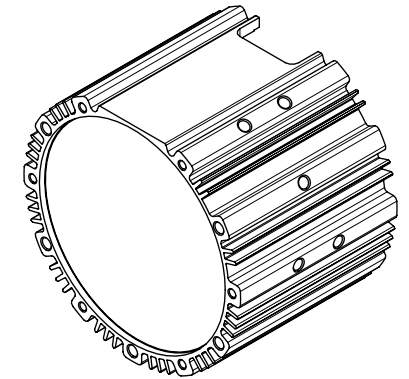


SECTION B-B



SECTION E-E

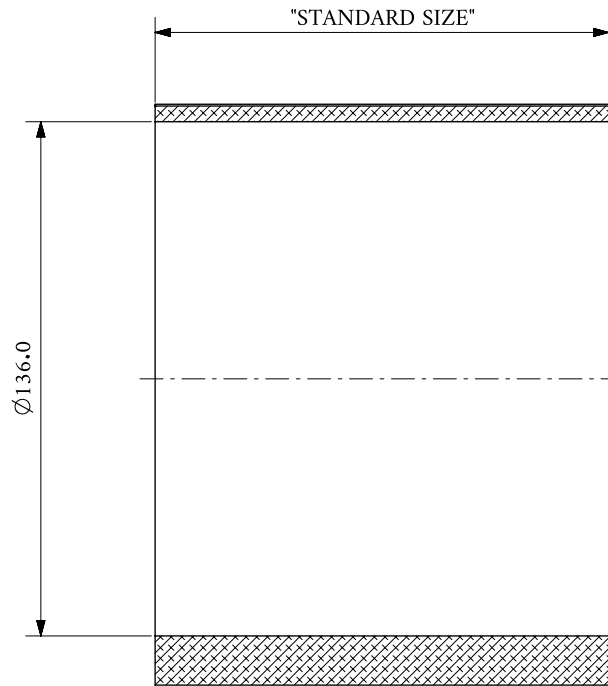
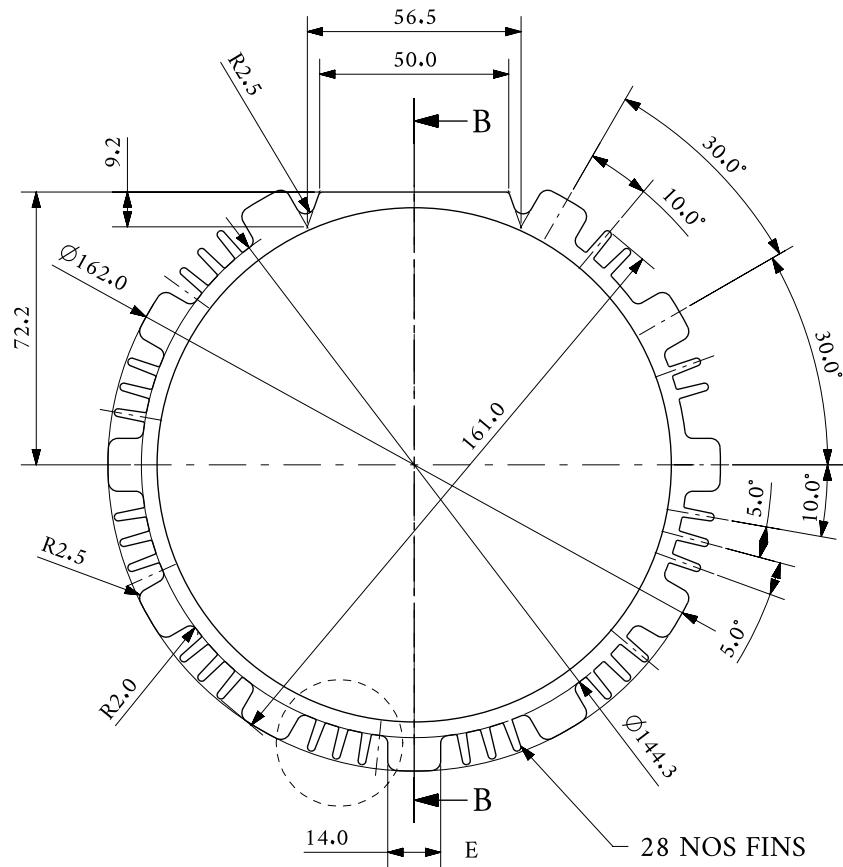


ISOMETRIC VIEW

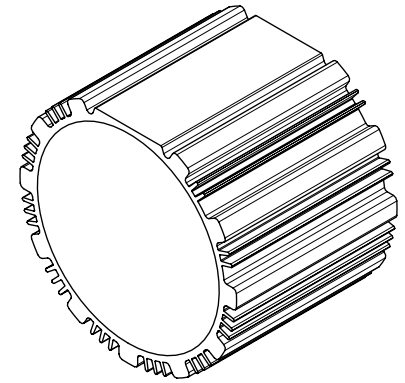
NOTE:-

1. ALL OVER MACHINING ROUGHNESS VALUE $\sqrt{N7}$ / $\sqrt{N8}$ UNLESS OTHERWISE SPECIFIED.
2. REMOVE SHARP CORNERS & BURR.
3. ALL CHAMFER IS 0.5X45° UNLESS SPECIFIED.
4. CED COATING SHOULD BE DONE BEFORE MACHINING.
5. REFER CTQ FOR CRITICAL TO QUALITY.

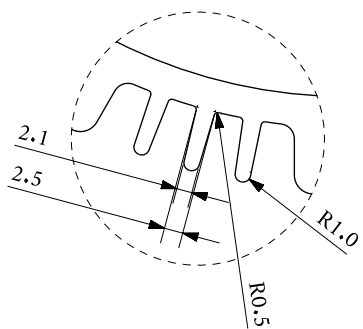
1) REMOVE ALL SHARP EDGES		REV.- R0	DESCRIPTION:-	
2) DRAWING NOT TO BE SCALE				
3) OPEN TOLERANCE ARE ±0.1				
ALL DIMENSIONS ARE IN MM. UNLESS OTHERWISE SPECIFIED				
TITLE:- MOTOR BODY MID DRIVE 3.0 KW M/C			NAME	DATE
			DRAWN	M.PANCHAL 24.02.24
			REVISION	-
			APPROVED	RAVI 24.02.24
			SHEET	1 OF 2
			SCALE	MATERIAL
			NTS	ALUMINIUM (LM6)
			WEIGHT	1.0KG
			DRG.NO.	4800029980
				R0



SECTION B-B

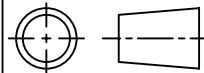


ISOMETRIC VIEW



DETAIL E
SCALE 1:1

1) REMOVE ALL SHARP EDGES 2) DRAWING NOT TO BE SCALE 3) OPEN TOLERANCE ARE ± 0.1		REV.- R0	DESCRIPTION:-			
ALL DIMENSIONS ARE IN MM. UNLESS OTHERWISE SPECIFIED					NAME	DATE
TITLE:- MOTOR BODY MID DRIVE 3.0 KW CAST					DRAWN	M.PANCHAL 24.02.24
					REVISION	-
					APPROVED	RAVI 24.02.24
					SHEET	2 OF 2
					DRG.NO.	4800029990 R0



SCALE	MATERIAL	WEIGHT
NTS	ALUMINIUM (LM6)	-



SHAKTI PUMPS (INDIA) LTD. PITHAMPUR