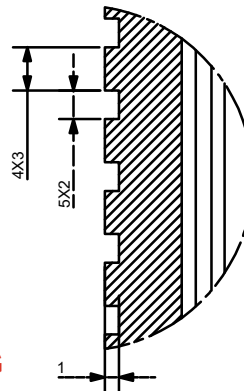
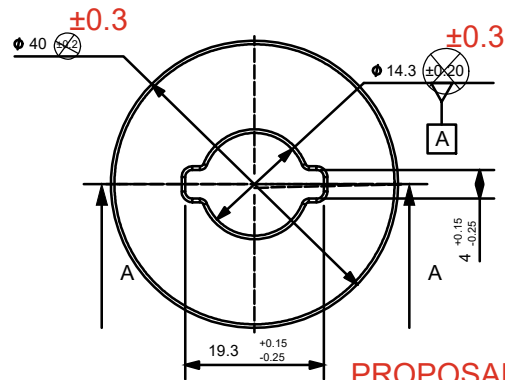
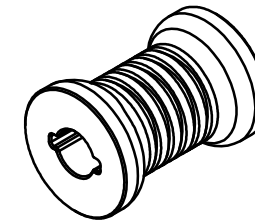


BILL OF MATERIAL						
ITEM	QTY	PART NAME	PART NUMBER	MATERIAL SPEC.	MASS (Kg)	CA (in2)
1	01	INNER	I-ST01873-D11	ALUMINIUM 6082 T6	0.106	--
						18.81

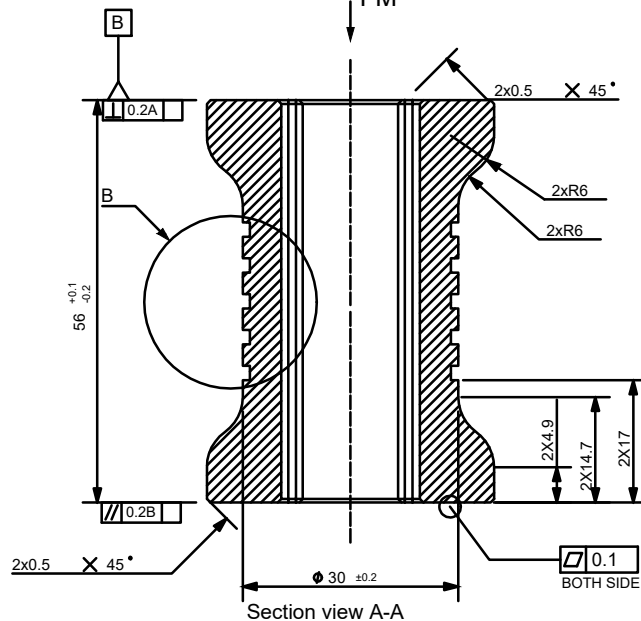
VERSION	PLACES	DESCRIPTION	CHANGED BY	DATE	APD. BY
A	---	INITIAL RELEASE	-----	07.11.24	S.A.



Detail B



Isometric view







Section view A-A

Q02698

NOTES:-

CRUSH TEST:
F1=60kN FM=120kN (FM= MAXIMUM CLAMP LOAD)

- 1) APPLY AN AXIAL LOAD OF 'F1' kN
AT A RATE OF 2mm/min. THIS INDICATES INITIAL HEIGHT h1.
- 2) CONTINUE WITH THE APPLICATION OF THE AXIAL LOAD AT A RATE OF 2mm/min
UNTILL 'FM' kN IS ACHIEVED.
- 3) CHECK THE HEIGHT OF INNER AFTER FM LOAD, hm.
- 4) MAX ALLOWANCE PERMANANT SET $L = \Delta(hm-h1)$ IS 0.16% OF THE INITIAL LENGTH.

<input checked="" type="checkbox"/>	FOR QUOTATION	DRAWN BY	VIKRAM SINGH		PART NAME	INNER	 ANAND NVH PRODUCTS (P) LTD. N.H-8 SECTOR 35 GURGAON HARYANA 122001 (INDIA) PROPERTY OF ANP <small>THIS DRAWING IS SOLE PROPERTY OF ANP. IT SHOULD NOT BE COPIED BY ANYONE WITHOUT WRITTEN PERMISSION OF ANP.</small>					
<input checked="" type="checkbox"/>	FOR COSTING	CHECKED BY	AMIT CHAWLA		PART NUMBER	I-ST01873-D11						
<input type="checkbox"/>	FOR DEVELOPMENT	APPROVED BY	S.ADHIMOLAM									
		TOLERANCED: ISO 2768-mk ISO 8015										
<input type="checkbox"/>	FOR SERIAL PRODUCTION	CAD SYSTEM: CATIA PROTECTION MARK: ISO 15016 (ASC) : ANAND SPECIAL CHARACTERISTIC				SHEET	A4	SCALE	NTS	UNIT	mm	A
		FOR WEIGHT	<input checked="" type="radio"/> CALCULATED	<input type="radio"/> ACTUAL	DATE	08.09.2023	MODEL IS MASTER FOR ALL NON-DIMENSIONED FEATURES					
						REFERENCE PARTING	