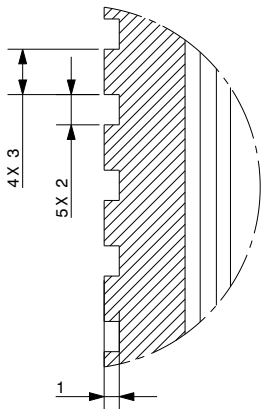
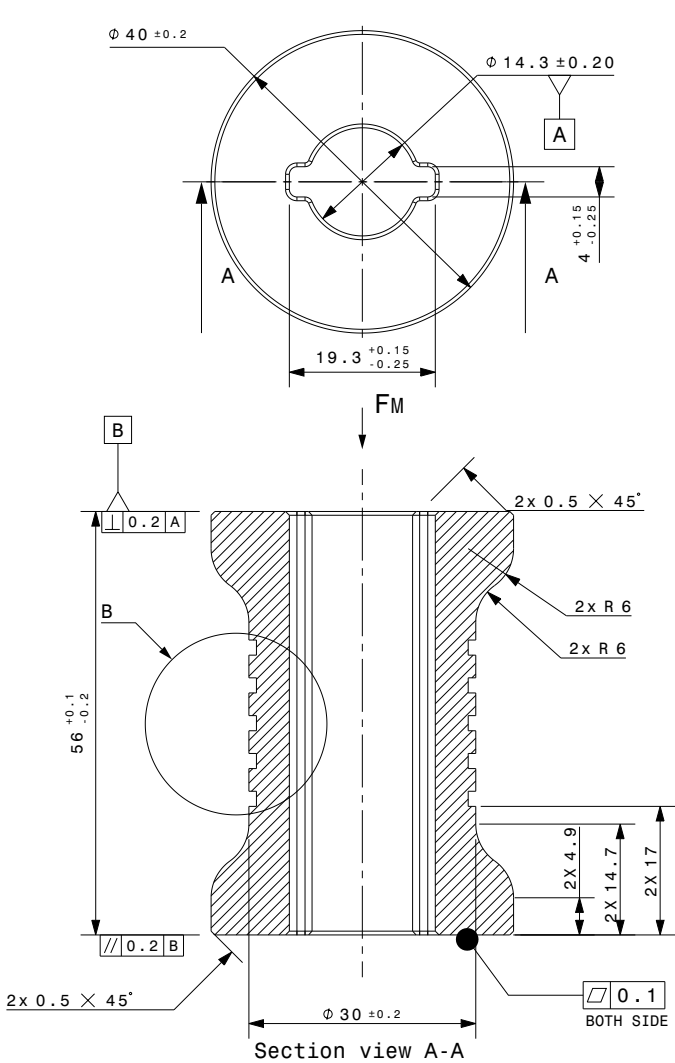


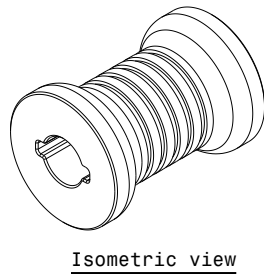
BILL OF MATERIAL						
ITEM	QTY	PART NAME	PART NUMBER	MATERIAL SPEC.	MASS (Kg)	CA (in <sup>2</sup> )
1	01	INNER	I-ST01873-D11	ALUMINIUM 6082 T6	0.106	--
						TSA (in <sup>2</sup> )
						18.81

VERSION	PLACES	DESCRIPTION	CHANGED BY	DATE	APD. BY
A	---	INITIAL RELEASE	-----	07.11.24	S.A.



Detail B





Q02698



Isometric view

NOTES: -

- CRUSH TEST:  
F1=60kN FM=120kN (FM= MAXIMUM CLAMP LOAD )
- 1) APPLY AN AXIAL LOAD OF 'F1' kN  
AT A RATE OF 2mm/min. THIS INDICATES INITIAL HEIGHT h1.
  - 2) CONTINUE WITH THE APPLICATION OF THE AXIAL LOAD AT A RATE OF 2mm/min  
UNTILL 'FM' kN IS ACHIEVED.
  - 3) CHECK THE HEIGHT OF INNER AFTER FM LOAD, hm.
  - 4) MAX ALLOWANCE PERMANANT SET  $\Delta L=(hm-h1)$  IS 0.16% OF THE INITIAL LENGTH.

<input checked="" type="checkbox"/>	FOR QUOTATION	DRAWN BY	VIKRAM SINGH		PART NAME	INNER	 <b>ANAND NVH PRODUCTS (P) LTD</b> N.H.-8 SECTOR 35 GURGAON HARYANA 122001 (INDIA) PROPERTY OF ANP <small>THIS DRAWING IS SOLE PROPERTY OF ANP. IT SHOULD NOT BE COPIED BY ANYONE WITHOUT WRITTEN PERMISSION OF ANP.</small>					
<input checked="" type="checkbox"/>	FOR COSTING	CHECKED BY	AMIT CHAWLA		PART NUMBER	I-ST01873-D11						
<input type="checkbox"/>	FOR DEVELOPMENT	APPROVED BY	SADHIMOOLAM		TOLERANCED: ISO 2768-mk ISO 8015							
<input type="checkbox"/>	FOR SERIAL PRODUCTION	CAD SYSTEM: CATIA V5		PROTECTION MARK: ISO 16016		(ASC) : ANAND SPECIAL CHARACTERISTIC						
		FOR WEIGHT SEE BOM	<input checked="" type="radio"/> CALCULATED	DATE : 08.09.2023	MODEL IS MASTER FOR ALL NON-DIMENSIONED FEATURES	REFERENCE PART NO						
			<input checked="" type="radio"/> ACTUAL			SHEET	A4	SCALE	NTS	UNIT	mm	A
						----				