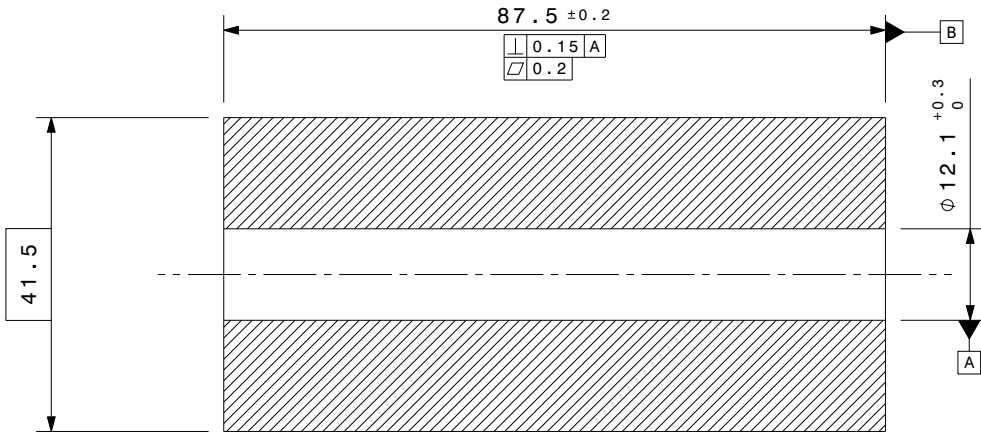
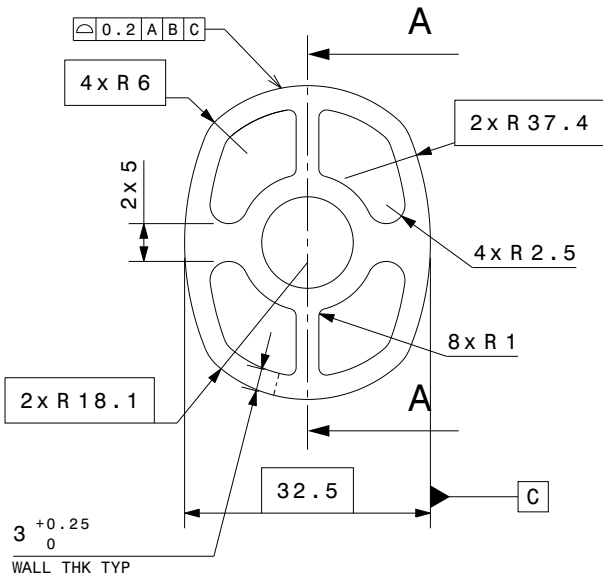
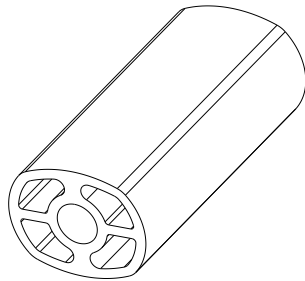


BILL OF MATERIAL							
ITEM	QTY	PART NAME	PART NUMBER	MATERIAL SPEC.	MASS (Kg)	CSA (in ²)	TSA (in ²)
1	--	INNER	I-ST18203-S11	ALUMINIUM 6005-T5 / 6061-T6 ASTM B221-05A (EXTRUSION)	0.139kg	16.369in2	46.297in2

VERSION	PLACES	DESCRIPTION	CHANGED BY	DATE	APD. BY
A	---	INITIAL RELEASE FOR SERIAL PRODUCTION	-----	07.11.2023	S.A.



Section view A-A







Isometric view

NOTES

- * FOR UNSPECIFIED DIMENSION REFER 3D CAD DATA.
- * BUCKLING LOAD- 105 kN CHANGE IN LENGTH ≤0.2% SLEEVE HEIGHT.
- * REMOVE ALL SHARP EDGES AND BURRS.

CONTROL COPY
Issue Date : 07.11.2023
Issued By : HEMANT

<input type="checkbox"/> FOR QUOTATION	DRAWN BY	VIKRAM SINGH		PART NAME	INNER	 ANAND NVH PRODUCTS (P) LTD N.H.-8 SECTOR 35 GURGAON HARYANA 122001 (INDIA) PROPERTY OF ANP <small>THIS DRAWING IS SOLE PROPERTY OF ANP. IT SHOULD NOT BE COPIED BY ANYONE WITHOUT WRITTEN PERMISSION OF ANP.</small>						
<input type="checkbox"/> FOR COSTING	CHECKED BY	AMIT CHAWLA		PART NUMBER	I-ST18203-S11							
<input type="checkbox"/> FOR DEVELOPMENT	APPROVED BY	SADHIMOOLAM										
	TOLERANCED: ISO 2768-mk ISO 8015											
<input checked="" type="checkbox"/> FOR SERIAL PRODUCTION	CAD SYSTEM: CATIA V5		PROTECTION MARK: ISO 16016		(ASC) : ANAND SPECIAL CHARACTERISTIC	SHEET	AI	SCALE	NTS	UNIT	mm	A
	FOR WEIGHT SEE BOM	<input checked="" type="checkbox"/> DIMENSIONED <input type="checkbox"/> ACTUAL	DATE: 30.08.2022		MODEL IS MASTER FOR ALL NON-DIMENSIONED FEATURES	REFERENCE PART NO	I-ST18203-D00					