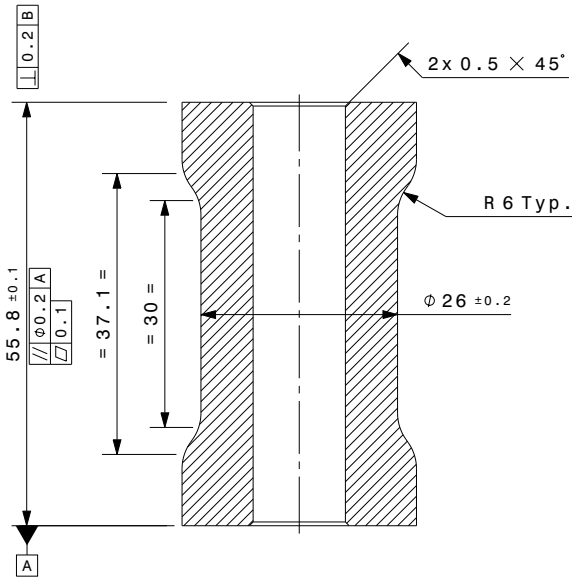
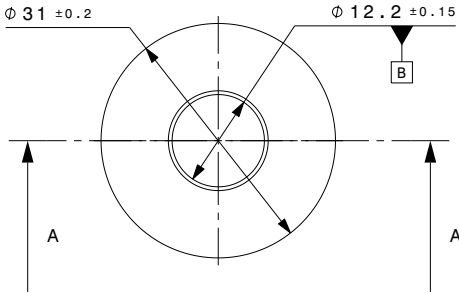


BILL OF MATERIAL							
ITEM	QTY	PART NAME	PART NUMBER	MATERIAL SPEC.	MASS (Kg)	CA (in <sup>2</sup> )	TSA (in <sup>2</sup> )
1	---	INNER	I-ST28202-S11	ALUMINIUM 6082-T6 / 6061-T6 ASTM B221-05A	0.078kg	7.789in2	13.06in2

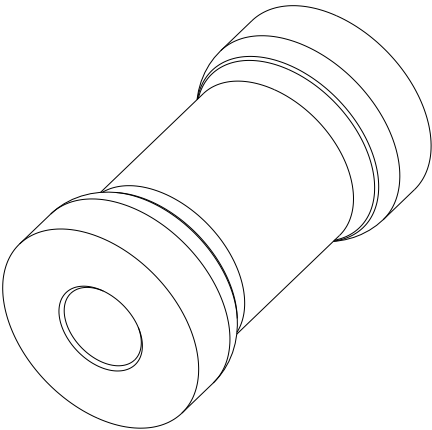
VERSION	PLACES	DESCRIPTION	CHANGED BY	DATE	APD. BY
A	---	RELEASE FOR SERIAL PRODUCTION	-----	13.05.2023	S.A.

6082T6- Q03100  
6061T6- Q03101



Section view A-A

CONTROL COPY  
Issue Date : 13/05/23  
Issued By : MANISH



Isometric view

NOTES

- \* BUCKLING LOAD 87 kN, CHANGE IN LENGTH ≤ 0.2% SLEEVE HEIGHT.
- \* REMOVE ALL SHARP EDGES AND BURRS.

<input type="checkbox"/> FOR QUOTATION	DRAWN BY MANISH KUMAR		PART NAME INNER	 ANAND NVH PRODUCTS (P) LTD N.H.-8 SECTOR 35 GURGAON (HARYANA-122001 INDIA) PROPERTY OF ANP <small>THIS DRAWING IS SOLE PROPERTY OF ANP. IT SHOULD NOT BE COPIED BY ANYONE WITHOUT WRITTEN PERMISSION OF ANP.</small>			
<input type="checkbox"/> FOR COSTING	CHECKED BY AMIT CHAWLA		PART NUMBER I-ST28202-S11				
<input type="checkbox"/> FOR DEVELOPMENT	APPROVED BY SADHIMOOLAM						
<input checked="" type="checkbox"/> FOR SERIAL PRODUCTION	CAD SYSTEM: CATIA V5	PROTECTION MARK: ISO 16016	(ASC) : ANAND SPECIAL CHARACTERISTIC	SHEET	M	SCALE	NTS
	FOR WEIGHT SEE BOM	DATE : 13.05.2023	MODEL IS MASTER FOR ALL NON-DIMENSIONED FEATURES	REFERENCE PART NO	I-ST28202-S00	UNIT	mm
							A