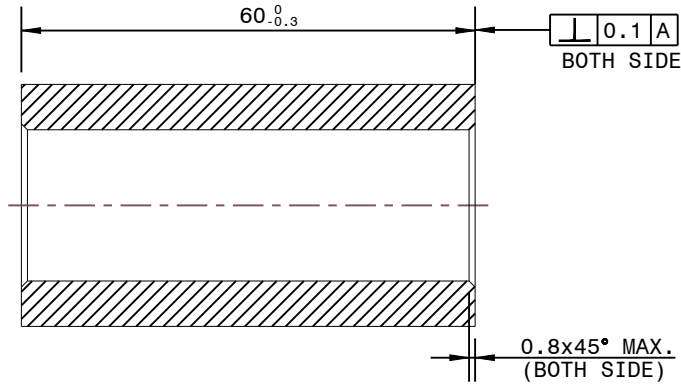
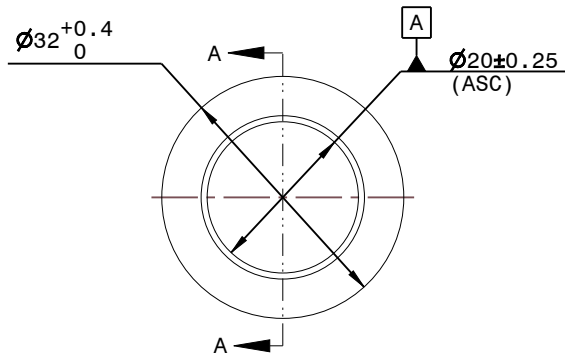


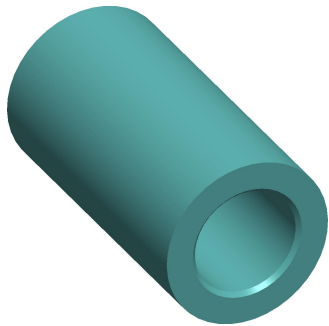
BILL OF MATERIAL							
ITEM	QTY	PART NAME	PART NUMBER	MATERIAL	TSA (In^2)	CA (In^2)	MASS (Kg.)
1.	--	INNER SLEEVE	M-7012-B01	A6061-T6	16.623	9.35	0.081

VERSION	PLACES	DESCRIPTION	CHANGED BY	DATE	APD. BY
A	--	INITIAL RELEASE	-----	17.12.2020	S.ADHIMOOLAM



SECTION A-A





Q03195



PICTORIAL VIEW

CONTROL COPY
Issue Date: 17.12.2020
Issued By: Manish

- NOTE:-**
- * PART MUST BE FREE FROM BURRS, FLASH AND SHARP EDGES.
 - * PART MUST BE FREE FROM RUST AND CONTAMINANT.
 - * CRUSH TEST : - APPLY AXIAL LOAD 85 kN AND MAXIMUM ALLOWANCE PERMANENT SET \triangle L IS 0.15 mm.
 - * (ASC) DENOTES ANAND'S SPECIAL CHARACTERISTICS.

<input type="checkbox"/>	FOR QUOTATION	DRAWN BY	MANISH KUMAR		PART NAME	INNER SLEEVE	 ANAND NVH PRODUCTS (P) LTD. N.H-8 SECTOR-35 GURGAON HARYANA, 122001 (INDIA) PROPERTY OF ANP THIS DRAWING IS SOLE PROPERTY OF ANP. IT SHOULD NOT BE COPIED BY ANYONE WITHOUT WRITTEN PERMISSION OF ANP						
<input type="checkbox"/>	PROPOSED	CHECKED BY	PANKAJ KASAR					PART NUMBER	M-7012-B01				
<input type="checkbox"/>	FOR DEVELOPMENT	APPROVED BY	S.ADHIMOOLAM		FOR METAL TOLERANCED: ISO 2768-mk ISO 8015 FOR RUBBER TOLERANCED: DIN ISO 3302-1 M3	MODEL IS MASTER FOR ALL NON-DIMENSIONAL FEATURE							
<input type="checkbox"/>	FOR SERIAL PRODUCTION	CAD SYSTEM:-	Creo 6.0	PROTECTION MARK:				ISO 16015	SHEET	A4	SCALE	NTS	UNIT
		MASS:-	0.081 Kg	DATE:-	17.12.2020	REFERENCE PART NO.							