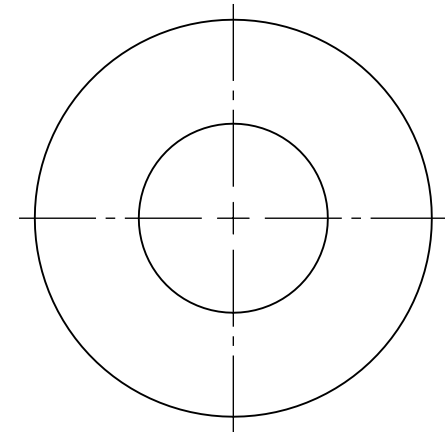
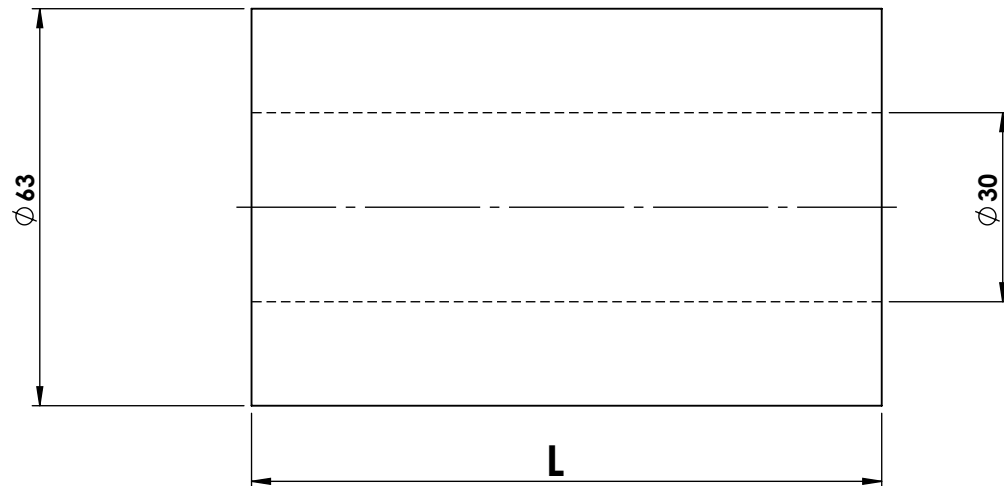


3.2/

Q03216



**Note:**

- **DEBURR ALL SHARP EDGES**
- **CHAMFER ALL DRILLS AND BORES 0.5x45° WHILE MACHINING**

Permissible deviation in mm for ranges in nominal lengths	
Over 0.5 upto 6	±0.1
Over 6 upto 30	±0.2
Over 30 upto 120	±0.3
Over 120 upto 400	±0.5
Over 400 upto 1000	±0.8
Over 1000 upto 2000	±1.2
Over 2000 upto 4000	±2.0



UNLESS OTHERWISE SPECIFIED: DIMENSIONS ARE IN MILLIMETERS

	NAME	SIGNATURE	DATE
DRAWN	SACHIN		08-03-2025
CHK'D	RAVINDRA		
APPV'D	P.SINGH		

PART NAME:		EXTRUSION FOR ROLLER FLANGE	
MATERIAL: ALUMINIUM GRADE 6063	WEIGHT: 650.804	gram	A4
SCALE:	PART NO:		
N.T.S	117226		