

M/S. RASAVI

Φ 02770

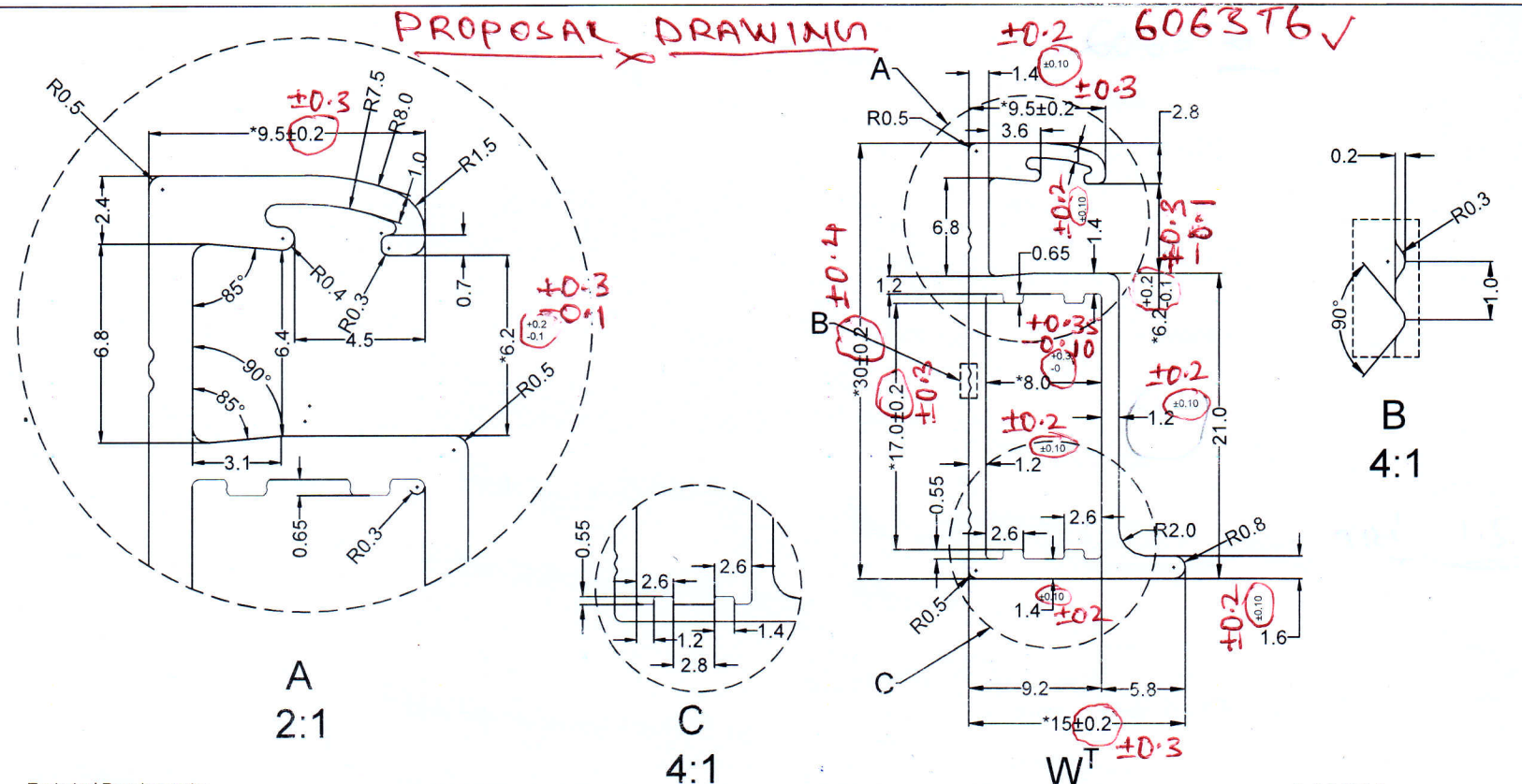
ALLOY - (600576)

Deke - 6-12-24

Time - 4.46

PROPOSAL DRAWING

± 0.2 6063T6 ✓

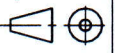


Technical Requirements:

1. If there is no instructions, the dimensions of the frame profile without tolerance are in accordance with the national standard GB/T5237.1-2017 high-precision requirements for processing.
2. Angle Requirements: The section angle of the profile does not exceed 0.5 °
3. Unmarked rounded corners are all R0.3
4. The surface is frosted & oxidized, the thickness of the oxide film is AA15 ; hardness ≥14
5. Appearance requirements are specified in acceptance criteria.
6. the degree of bending & twisting meets the requirements of processing drawings
7. Area : 114.52 mm² Theoretical Weight per meter : 0.270 kg/m, Theoretical Aluminum Density : 2710 kg/m³
8. High strength alloy **6005 T6** materials require tensile strength $R_m \geq 255$ MPa, Yield strength R_p 0.2 ≥ 215 MPa, Elongation $\geq 6\%$
9. Unspecified dimension tolerance ± 0.2 mm, Unspec thickness : ± 0.10 mm
- 10. " * " are Critical dimensions.**

Each supplier's Specifications approved by Authorized Technical Team of RASaVI will be superseded.

00		New Release	004	23-06-23	CTF
Rev	Mark	Description of change	DCI	Date	Sign

Prepared By : Pratham B.		Checked By : M.R. Savaliya		Approved By : M.R. Savaliya	
				Undiminished edges acc. to DIN ISO 13715	
		Scale: 1 : 1		Mass:	
RAsaVI ImpEX Plot no. C-10, Road no. 7, Hojiwala Industrial Estate, GIDC Sachin, Surat - 394230 www.rasavimpex.in		All units in SI unit. Dimensions in mm Dimensional variation acc. to DIN ISO 2768-1		Material: Aluminum Frame Description: Cross Section of Frame -GF 30x15x1.6 mm	
		Drawing No. RAS01AF-G-11-00		Sheet 1 of 1	
		Copyright as per ISO 16015		Ref. Draw No.:	