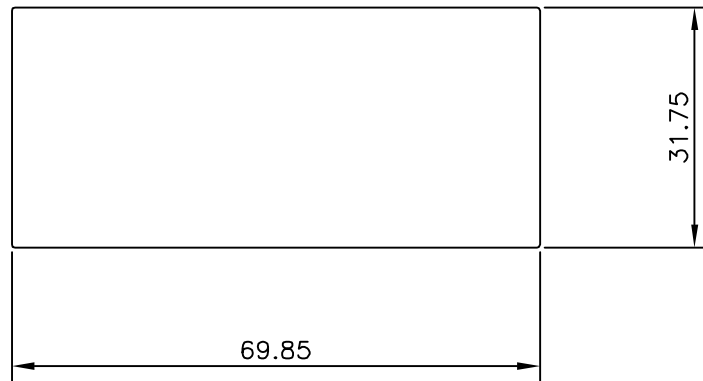



P-18682

10551



TOLERANCE CHART CD = CIRCUMSCRIBING CIRCLE

CD ≤ 100	100 < CD ≤ 200	200 < CD < 300	300 < CD < 500
UPTO 10mm - ±0.40	±0.50	±0.55	±0.60
10.0 - 25.0 - ±0.50	±0.70	±0.80	±0.90
25.0 - 50.0 - ±0.80	±0.90	±1.0	±1.20
50.0 - 100.0 - ±1.0	±1.20	±1.30	±1.60
100 - 150 - -	±1.50	±1.70	±1.80
150 - 200 - -	±1.9	±2.20	±2.40
200 - 300 - -	-	±2.50	±2.80
300 - 450 - -	-	-	±3.50

 SYMBOL OF QUALITY AN ISO 9001 COMPANY	JINDAL ALUMINIUM LTD. <i>BANGALORE-560073 (INDIA)</i>	DRAWN	J.P.KAUSHIK	15-09-2018
		CHECKED		
1. ALL DIMENSIONS ARE IN mm. 2. ROUND OFF ALL SHARP CORNERS WITH 0.40 mm. 3. TOLERANCES WILL BE AS PER BS:EN-755-9 , UNLESS OTHERWISE SPECIFIED		APPROVED	B.NATARAJA	20-09-2018
		SCALE		1:1
PARTY'S NAME P & P NON FERROUS-UK		AREA mm ²		2217.6
		PERIMETER mm.		202.513
PARTY'S DRAWING No. AS PER SPECIFICATION		WEIGHT kg/m		5.988
		DRAWING No.	P-18682	SECTION No.
ALLOY & TEMPER 6082 T6			10551	10551
DESCRIPTION FLAT BAR				