
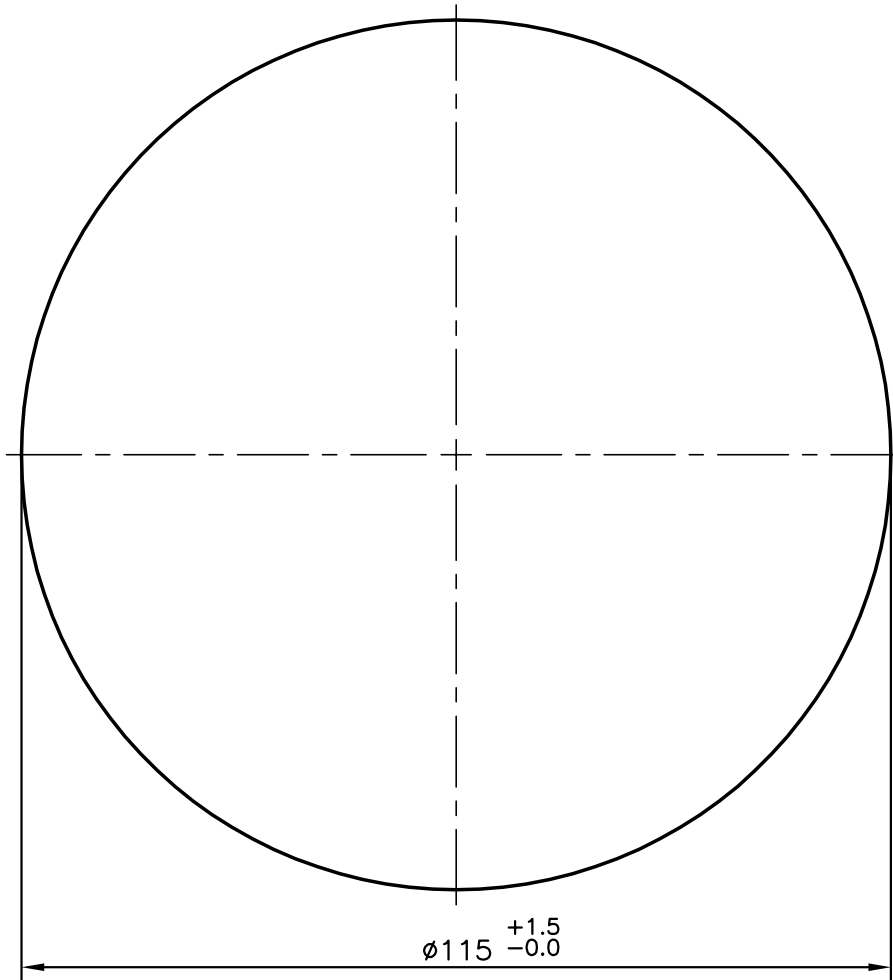


1499

11095


TOLERANCE ADDED ON DIMENSION $\phi 115^{+1.5}_{-0.0}$
AS PER M/s AUTOBAHN MOTOR PRODUCTS
REQUIREMENT. DATED ON 17-07-2013



JINDAL ALUMINIUM LTD.

BANGALORE-560073

		NAME	DATE
		DRAWN	R.D.Sharma
1. ALL DIMENSIONS ARE IN mm. 2. ROUND OFF ALL SHARP CORNERS WITH 0.4 mm. 3. TOLERANCES WILL BE AS PER ASTM B-221, UNLESS OTHERWISE SPECIFIED		CHECKED	
		APPROVED	
PARTY'S NAME	SCOPE METAL TRADING, ISRAEL	SCALE	1:1
PARTY'S DRAWING No.	NIL	WEIGHT kg/m	28.045
ALLOY & TEMPER	6061 T6511 (AS PER ASTM)	SECTION No.	11095
LENGTH	1000 mm.	DRAWING No. 11095	
DESCRIPTION	ROUND ROD		