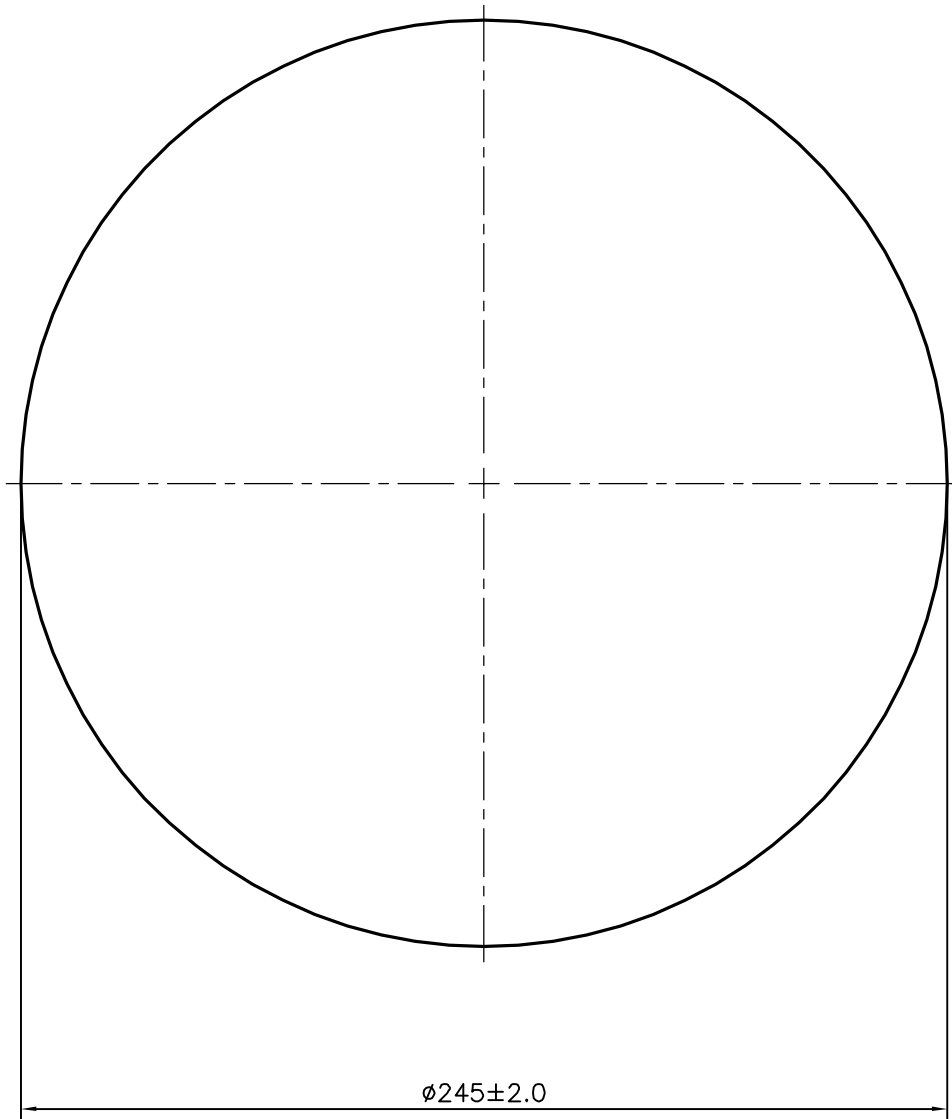


P-15861

11203

 $\phi 245 \pm 2.0$ 

SYMBOL OF QUALITY  
AN ISO 9001 COMPANY

**JINDAL ALUMINIUM LTD.**  
**BANGALORE-560073 (INDIA)**

	NAME	DATE
DRAWN	J.P.KAUSHIK	13-05-2016
CHECKED		
APPROVED	S.S.GARG	19-05-2016
SCALE		0.5:1
AREA mm <sup>2</sup>		47143.525
PERIMETER mm.		769.69
WEIGHT kg/m		127.288
DRAWING No.	SECTION No.	
P-15861	-	
11203	11203	

1. ALL DIMENSIONS ARE IN mm.
2. ROUND OFF ALL SHARP CORNERS WITH 0.40 mm.
3. TOLERANCES WILL BE AS PER,BS:EN-755-3 UNLESS OTHERWISE SPECIFIED

PARTY'S NAME	COPALCOR TRADING WADEVILLE, SOUTH AFRICA
PARTY'S DRAWING No.	AS PER SPECIFICATION
ALLOY & TEMPER	6082 T6
DESCRIPTION	ROUND ROD SECTION