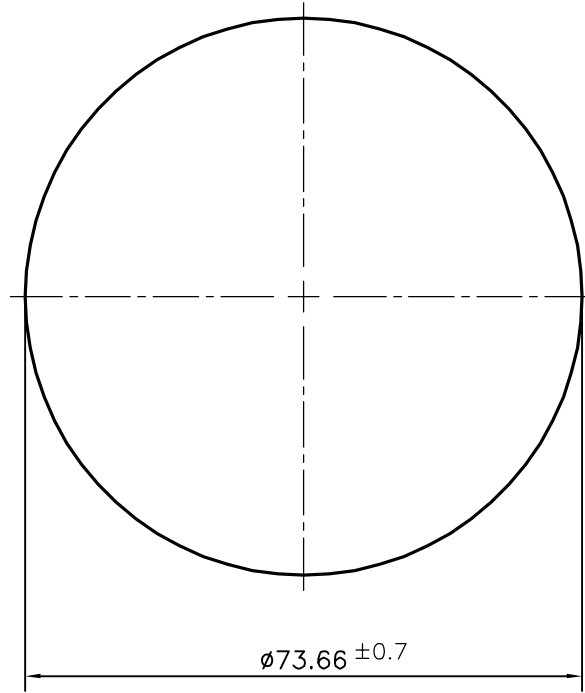


P-15953

11204



SYMBOL OF QUALITY
AN ISO 9001 COMPANY

JINDAL ALUMINIUM LTD.
BANGALORE-560073 (INDIA)

	NAME	DATE
DRAWN	<i>PARVESH</i>	17-06-2016
CHECKED		
APPROVED	S.S. GARG	24-06-2016
SCALE		1:1
AREA mm ²		4261.41
PERIMETER mm.		231.41
WEIGHT kg/m		11.506
DRAWING No.		SECTION No.
P-15953		-
11204		11204

1. ALL DIMENSIONS ARE IN mm.
2. ROUND OFF ALL SHARP CORNERS WITH 0.40 mm.
3. TOLERANCES WILL BE AS PER BS:EN-755-9 , UNLESS OTHERWISE SPECIFIED

PARTY'S NAME	ALUMINA LLC, USA
PARTY'S DRAWING No.	AS PER SPECIFICATION
ALLOY & TEMPER	6082 T6
DESCRIPTION	ROUND ROD