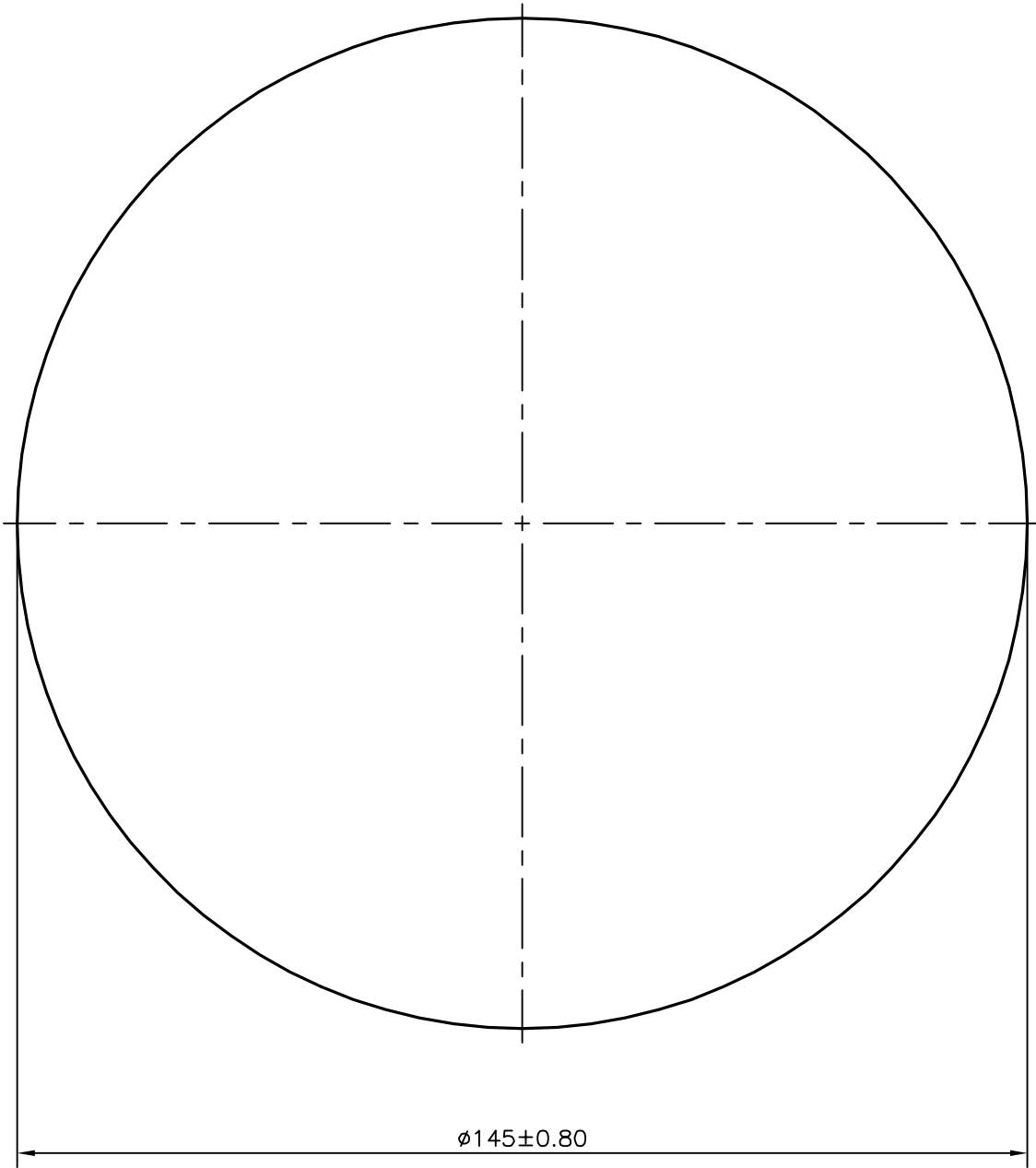



P-16346

11208



 SYMBOL OF QUALITY AN ISO 9001 COMPANY	<b>JINDAL ALUMINIUM LTD.</b> BANGALORE-560073 (INDIA)		NAME	DATE
		DRAWN	KIRAN	16-09-2016
1. ALL DIMENSIONS ARE IN mm. 2. ROUND OFF ALL SHARP CORNERS WITH 0.40 mm. 3. TOLERANCES WILL BE AS PER EN:755/3 , UNLESS OTHERWISE SPECIFIED		CHECKED		
		APPROVED	S.S. GARG	17-09-2016
PARTY'S NAME SCHMOLZ + BICKENBACH B.V., NEDERLAND		SCALE		1:1
		AREA mm <sup>2</sup>		16512.996
PARTY'S DRAWING No. AS PER SPECIFICATION		PERIMETER mm.		455.531
		WEIGHT kg/m		44.585
ALLOY & TEMPER 6082 T6		DRAWING No.		SECTION No.
		P-16346		-
DESCRIPTION ROUND ROD		11208		11208