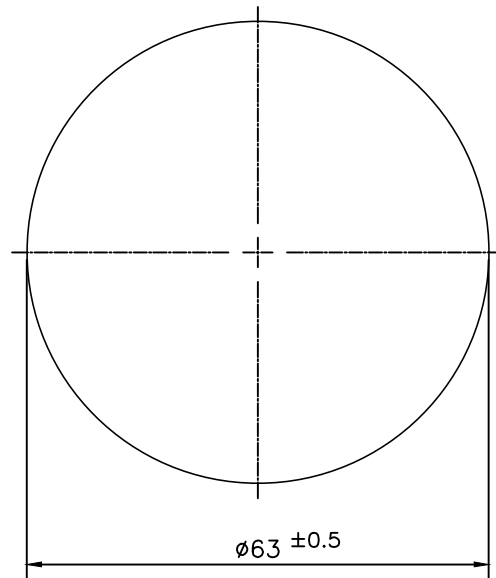



IAL-A-0554

11250



TWIST =  $1/2^\circ$  300 mm.  
 STRAIGHTNESS = 1.5 mm./MTR.  
 ANGULARITY =  $\pm 2.0^\circ$

 SYMBOL OF QUALITY AN ISO 9001 COMPANY	<b>JINDAL ALUMINIUM LTD.</b> BANGALORE-560073 (INDIA)		NAME	DATE
		DRAWN	PARVESH	29-12-2021
1. ALL DIMENSIONS ARE IN mm. 2. ROUND OFF ALL SHARP CORNERS WITH 0.40 mm. 3. TOLERANCES WILL BE AS PER IS:3965-1981 , UNLESS OTHERWISE SPECIFIED		CHECKED		
		APPROVED		
PARTY'S NAME -		SCALE		1:1
		AREA mm <sup>2</sup>		3117.245
PARTY'S DRAWING No. AS PER DRAWING		PERIMETER mm.		197.92
		WEIGHT kg/m		8.417
ALLOY & TEMPER 6063 T6		DRAWING No.		SECTION No.
		IAL-A-0554		-
DESCRIPTION ROUND ROD		11250		11250