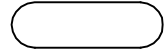
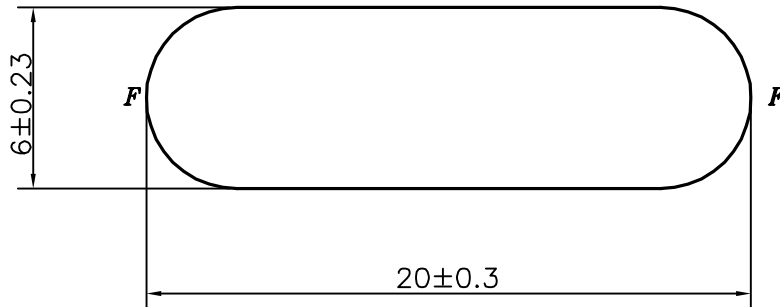


P-23449

12400



SCALE:- 1:1



F= FULL RADIUS (2 PLACES)

1. STRAIGHTNESS= 1.7mm/M
2. TWIST= 1.7mm/M
3. ANGULARITY= $\pm 2'$
4. FLATNESS= 0.007xWIDTH



SYMBOL OF QUALITY
AN ISO 9001 COMPANY

JINDAL ALUMINIUM LTD.
BANGALORE-560073 (INDIA)

	NAME	DATE
DRAWN	SURENDRA	11-01-2022
CHECKED		
APPROVED	B.NATARAJA	29-01-2022
SCALE		4:1
AREA mm ²		112.2743
PERIMETER mm.		46.8496
WEIGHT kg/m		0.303
DRAWING No.		SECTION No.
P-23449		-
12400		12400

1. ALL DIMENSIONS ARE IN mm.
2. ROUND OFF ALL SHARP CORNERS WITH 0.40 mm.
3. TOLERANCES WILL BE AS PER IS3965:1981 , UNLESS OTHERWISE SPECIFIED

PARTY'S NAME	UNIPOWER TRANSFORMERS PRIVATE LIMITED., KERALA
PARTY'S DRAWING No.	AS PER SPECIFICATION
ALLOY & TEMPER	6101 T61
DESCRIPTION	FLAT BAR WITH FULL RADIUS