

P-7649-1

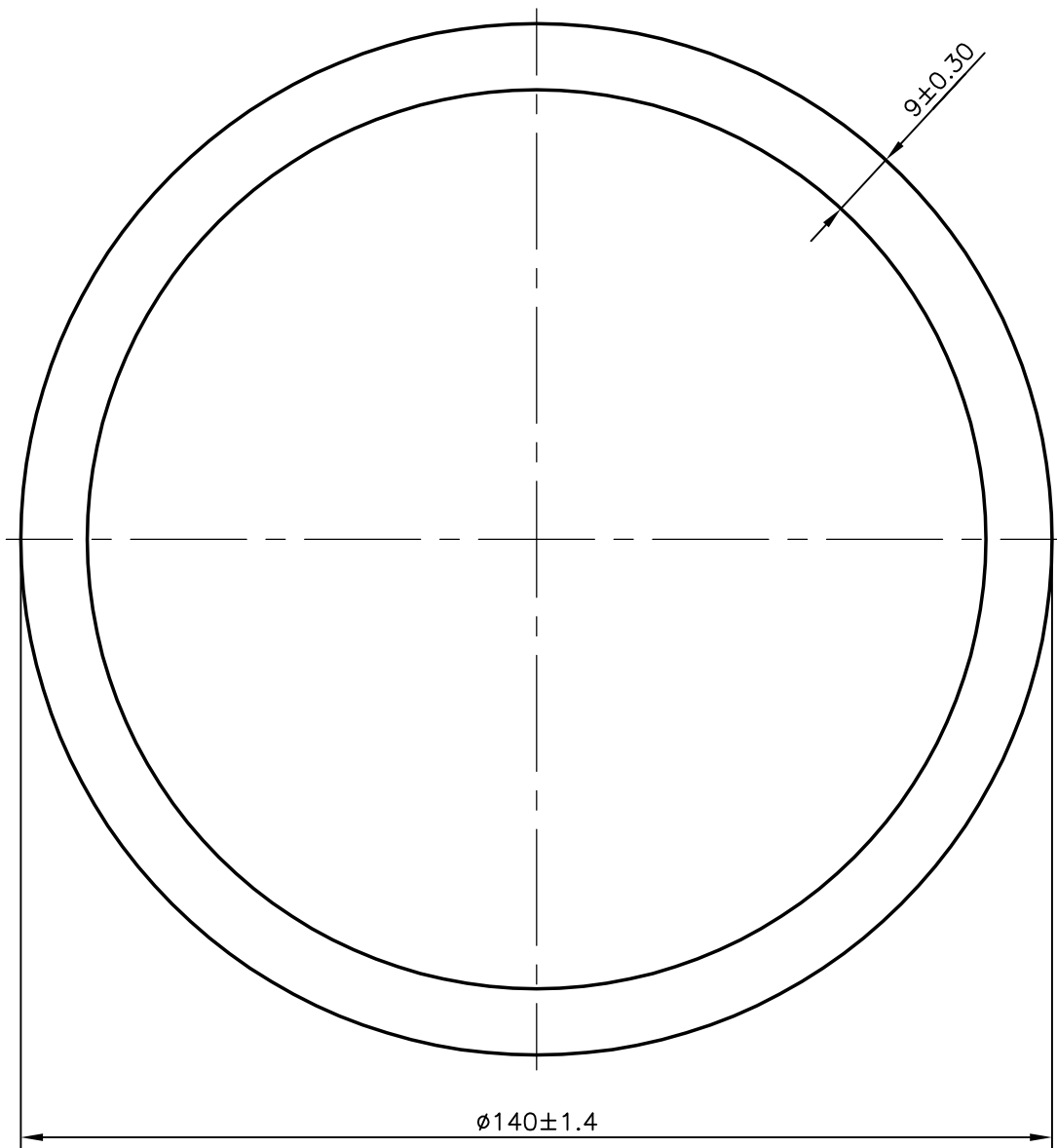
13432


ISSUE-2

THICKNESS CHANGED FROM 8.5 TO 9.0

ISSUE-3

TOLERANCE CHANGED FROM ± 0.7 TO ± 0.30



| | | | | |
|--|--|----------------------|-------------|---------------|
|  SYMBOL OF QUALITY AN ISO 9001 COMPANY | JINDAL ALUMINIUM LTD. BANGALORE-560073 (INDIA) | NAME | | DATE |
| | | DRAWN | J.P.KAUSHIK | 26-03-2009 |
| 1. ALL DIMENSIONS ARE IN mm. 2. ROUND OFF ALL SHARP CORNERS WITH 0.40 mm. 3. TOLERANCES WILL BE AS PER IS:2673-2002 UNLESS OTHERWISE SPECIFIED | | CHECKED | | |
| | | APPROVED | | |
| PARTY'S NAME AL-CAN EXPORTS PVT. LTD., THANE | | SCALE | | 1:1 |
| | | AREA mm ² | | 3703.938 |
| PARTY'S DRAWING No. AS PER SPECIFICATION | | PERIMETER mm. | | 439.823 |
| | | WEIGHT kg/m | | 10.001 |
| ALLOY & TEMPER 6061 'O' | | DRAWING No. | | P-7649-1 |
| | | SECTION No. | | - |
| DESCRIPTION ROUND TUBE | | 13432 | | 13432-ISSUE-3 |
| | | | | |