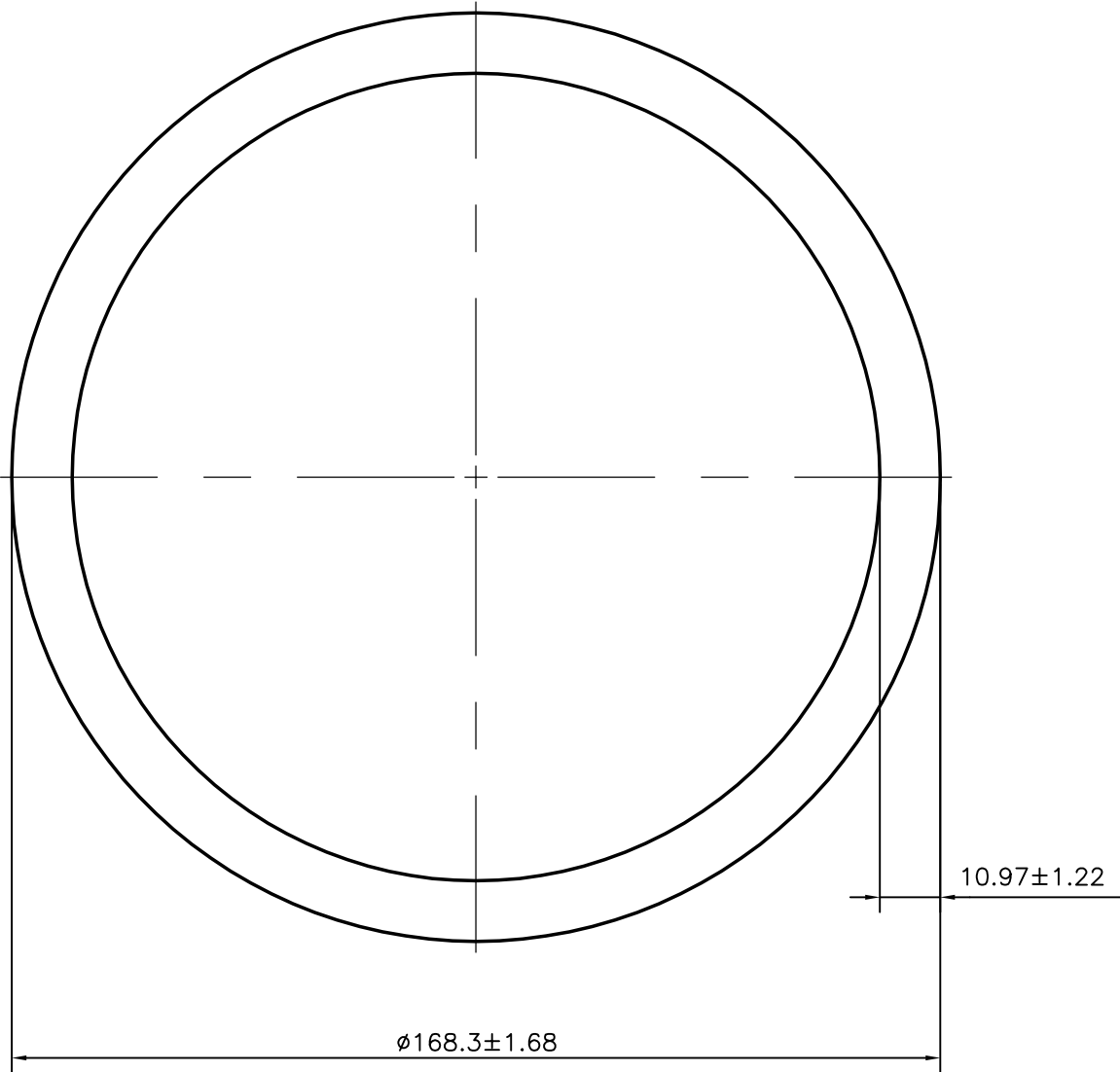



P-10654
S2817
13502



 SYMBOL OF QUALITY AN ISO 9001 COMPANY	<b>JINDAL ALUMINIUM LTD.</b> BANGALORE-560073 (INDIA)		NAME	DATE
		DRAWN	J.P.KAUSHIK	17-12-2010
1. ALL DIMENSIONS ARE IN mm. 2. ROUND OFF ALL SHARP CORNERS WITH 0.40 mm. 3. TOLERANCES WILL BE AS PER, IS:2673-2002 UNLESS OTHERWISE SPECIFIED		CHECKED		
		APPROVED	S.S.GARG	31-12-2010
PARTY'S NAME C & S ELECTRIC LTD., NOIDA		SCALE		1:0.75
		AREA mm <sup>2</sup>		5422.106
PARTY'S DRAWING No. AS PER SPECIFICATION		PERIMETER mm.		528.73
		WEIGHT kg/m		14.64
ALLOY & TEMPER 63401 WP		DRAWING No.	SECTION No.	
		P-10654	-	
DESCRIPTION ROUND TUBE		S2817	S2817	
		13502	13502	