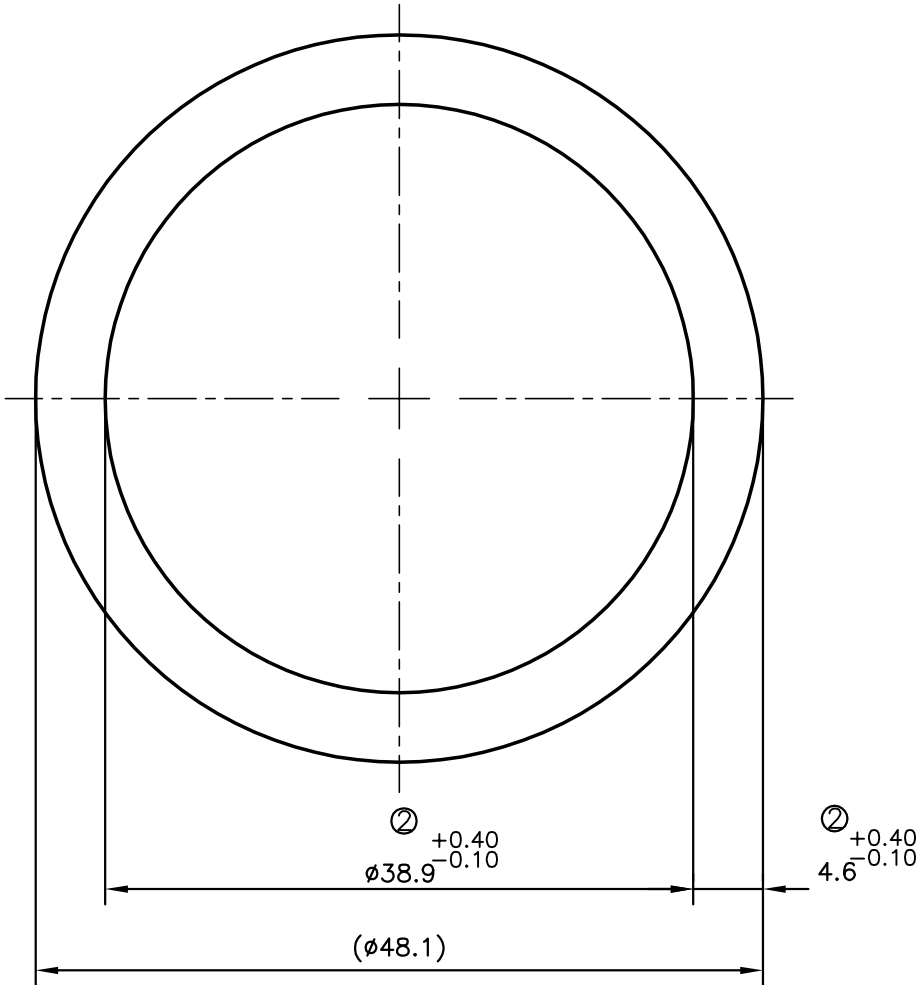
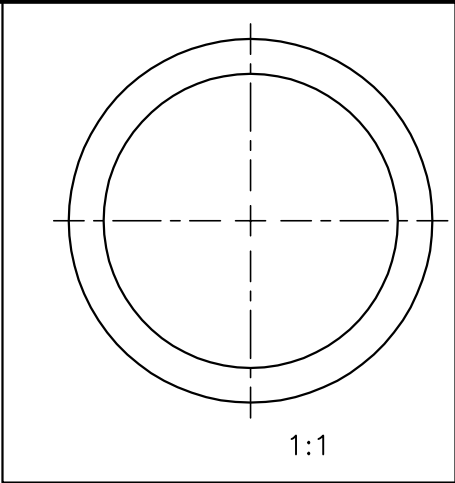



P-11045
S2983
13512



ISSUE-2 :- TOLERANCE CHANGED ON ID $\phi 38.9 \pm 0.30$ TO $\phi 38.9 \begin{matrix} +0.40 \\ -0.10 \end{matrix}$ & 4.6 ± 0.30 TO $4.6 \begin{matrix} +0.40 \\ -0.10 \end{matrix}$

 SYMBOL OF QUALITY AN ISO 9001 COMPANY	JINDAL ALUMINIUM LTD. BANGALORE-560073 (INDIA)	DRAWN	NAME	DATE
		CHECKED	J.P.KAUSHIK	05-07-2011
1. ALL DIMENSIONS ARE IN mm. 2. ROUND OFF ALL SHARP CORNERS WITH 0.40 mm. 3. TOLERANCES WILL BE AS PER, IS:2673-2002 UNLESS OTHERWISE SPECIFIED		APPROVED	S.S.GARG	05-07-2011
		SCALE		2:1
PARTY'S NAME BGR ENERGY SYSTEMS LTD., CHENNAI		AREA	mm ²	628.633
		PERIMETER	mm.	151.111
PARTY'S DRAWING No. AS PER SPECIFICATION		WEIGHT	kg/m	1.697
		DRAWING No.		SECTION No.
ALLOY & TEMPER 1060 "F"		P-11045		-
		S2983		S2983(ISSUE-2)
DESCRIPTION ROUND TUBE		13512		13512