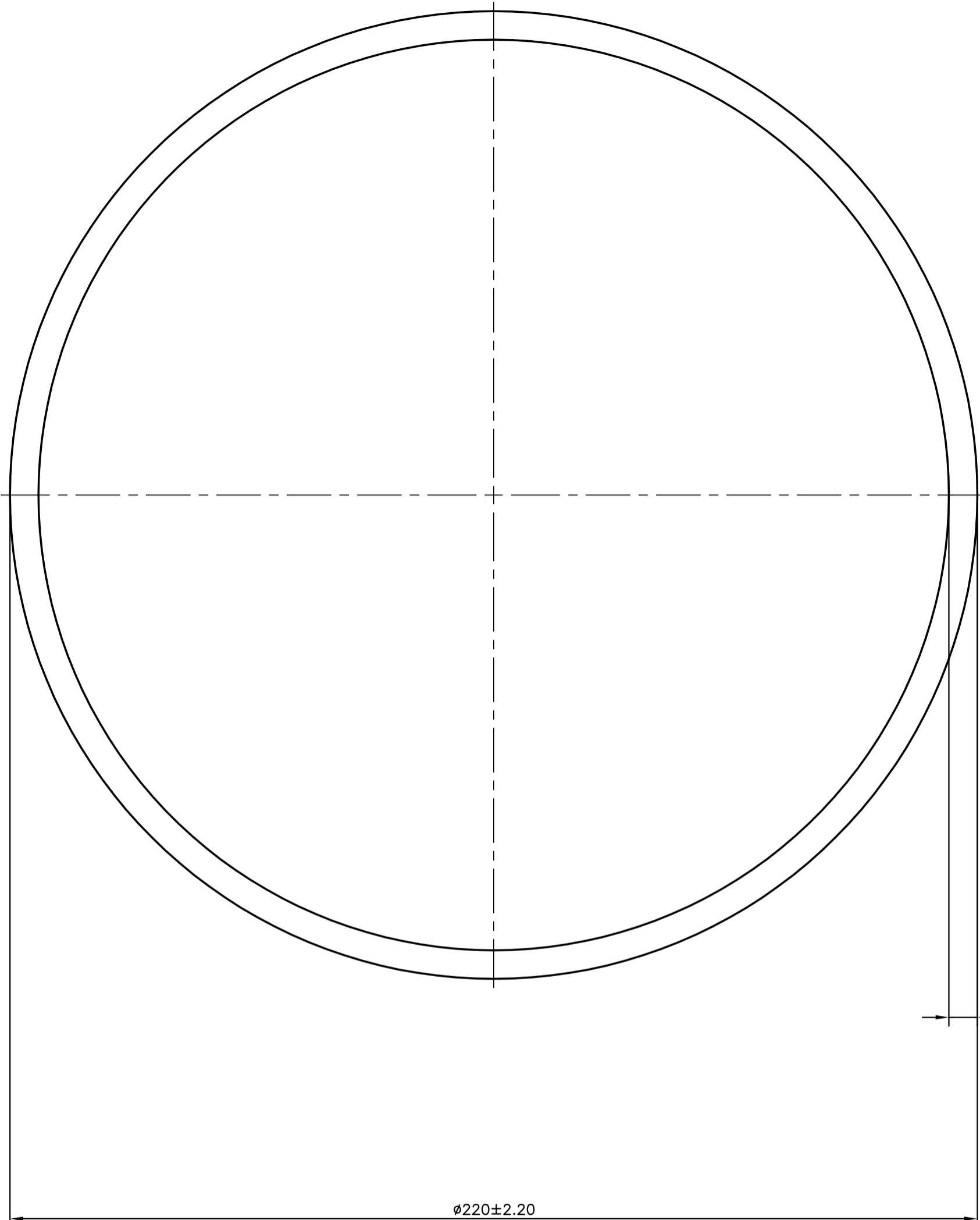



| |
|--------|
| P-9676 |
| S2407 |
| 13519 |



| | | | |
|--|--|----------------------|------------------------|
|  SYMBOL OF QUALITY AN ISO 9001 COMPANY | JINDAL ALUMINIUM LTD. BANGALORE-560073 (INDIA) | NAME | DATE |
| | | DRAWN | J.P.KAUSHIK 08-12-2009 |
| 1. ALL DIMENSIONS ARE IN mm. 2. ROUND OFF ALL SHARP CORNERS WITH 0.40 mm. 3. TOLERANCES WILL BE AS PER IS:2673-2002 UNLESS OTHERWISE SPECIFIED | | CHECKED | |
| | | APPROVED | |
| | | SCALE | 1:1 |
| PARTY'S NAME | | AREA mm ² | 4359.745 |
| | | PERIMETER mm. | 691.15 |
| PARTY'S DRAWING No. | | WEIGHT kg/m | 11.771 |
| | | DRAWING No. | SECTION No. |
| ALLOY & TEMPER | | P-9676 | - |
| | | S2407 | S2407 |
| DESCRIPTION | | 13519 | 13519 |
| | | | |
| REEP INDUSTRIES PVT. LTD.,CHENGALPATTU | | | |
| AS PER SPECIFICATION | | | |
| 6082 T6 | | | |
| ROUND TUBE SECTION | | | |