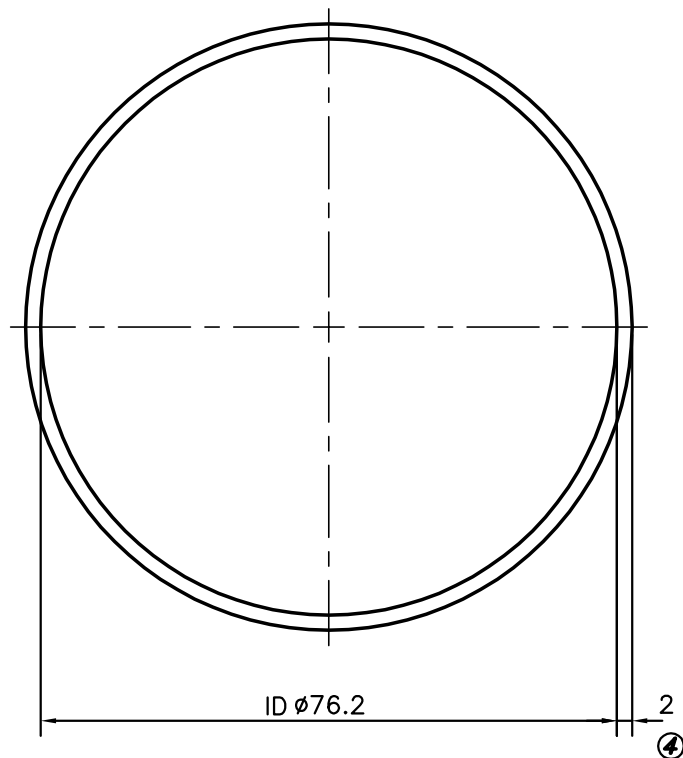


P-11794

13527



➡ **ISSUE :- 2 (DATED-5/9/2012)**

THICKNESS REDUCED FROM 2 mm. TO 1.5 mm. & WEIGHT ALSO CHANGED FROM 1.327 Kg/m TO 0.989 Kg/m.

➡ **ISSUE :- 3 (DATED-29/01/2013)**

THICKNESS INCREASED FROM 1.5 mm. TO 3 mm. & WEIGHT ALSO CHANGED FROM 0.989 Kg/m TO 2.015 Kg/m.

➡ **ISSUE :- 4 (DATED-20/8/2013)**

THICKNESS REDUCED FROM 3 mm. TO 2 mm. & WEIGHT ALSO CHANGED FROM 2.015 Kg/m TO 1.327 Kg/m.



SYMBOL OF QUALITY
AN ISO 9001 COMPANY

JINDAL ALUMINIUM LTD.
BANGALORE-560073 (INDIA)

	NAME	DATE
DRAWN	PARVESH	20-08-2013
CHECKED		
APPROVED	S.S.GARG	21-08-2013
SCALE		1:1
AREA mm ²		491.345
PERIMETER mm.		251.956
WEIGHT kg/m		1.327
DRAWING No.	SECTION No.	
P-11794	-	
13527	13527 (ISSUE-4)	

1. ALL DIMENSIONS ARE IN mm.
2. ROUND OFF ALL SHARP CORNERS WITH 0.40 mm.
3. TOLERANCES WILL BE AS PER IS:2673-2002, UNLESS OTHERWISE SPECIFIED

PARTY'S NAME	OWN USE
PARTY'S DRAWING No.	AS PER SPECIFICATION
ALLOY & TEMPER	HE9 WP
DESCRIPTION	ROUND TUBE