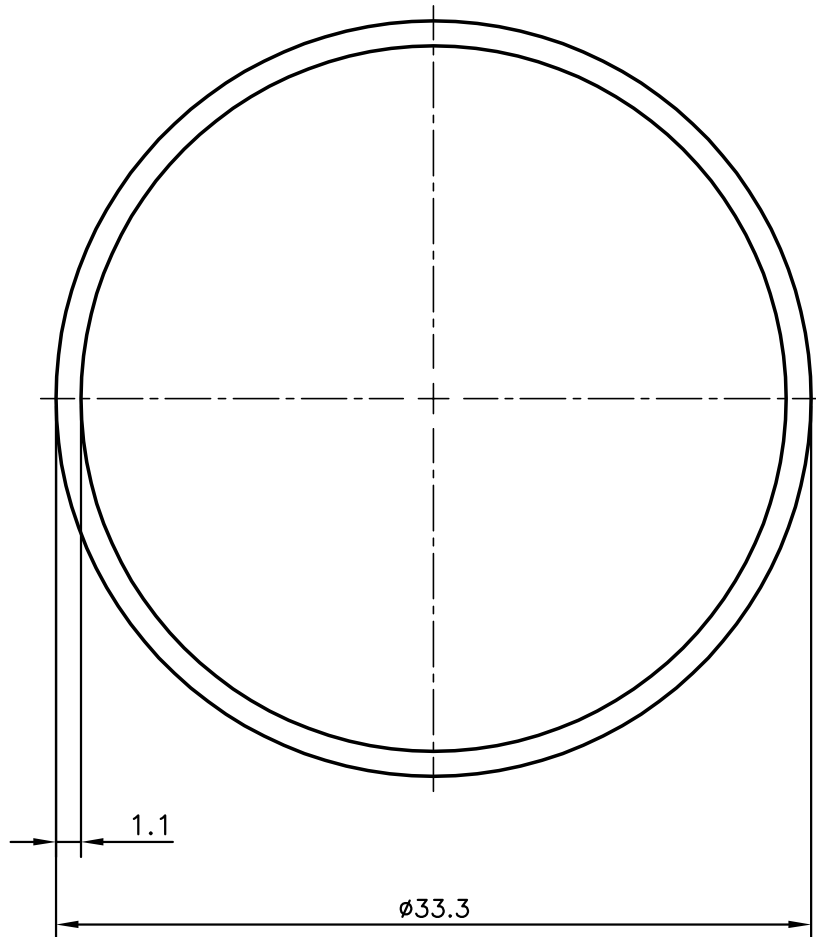


P-12997

13570

SCALE 1:1



TOLERANCES ON OVERALL WIDTHS & WIDTHS ACROSS FLATS OF BARS, & REGULAR SECTIONS

UPTO 6.40mm - ± 0.20	UPTO 32.0mm - ± 0.38	UPTO 120.0mm - ± 0.85	1. STRAIGHTNESS=1.7mm/M 2. TWIST=1.7mm/M 3. ANGULARITY= $\pm 2^\circ$ 4. FLATNESS =0.3mm
UPTO 10.0mm - ± 0.23	UPTO 50.0mm - ± 0.46	UPTO 160.0mm - ± 1.02	
UPTO 12.0mm - ± 0.25	UPTO 60.0mm - ± 0.53	UPTO 200.0mm - ± 1.14	
UPTO 16.0mm - ± 0.28	UPTO 80.0mm - ± 0.69	UPTO 250.0mm - ± 1.40	
UPTO 25.0mm - ± 0.30	UPTO 100.0mm - ± 0.75	UPTO 320.0mm - ± 1.70	



SYMBOL OF QUALITY
AN ISO 9001 COMPANY

JINDAL ALUMINIUM LTD.
BANGALORE-560073 (INDIA)

	NAME	DATE
DRAWN	SRIVATHSA	03-09-2013
CHECKED		
APPROVED	S.S.GARG	09-10-2013

1. ALL DIMENSIONS ARE IN mm.
2. ROUND OFF ALL SHARP CORNERS WITH 0.40 mm.
3. TOLERANCES WILL BE AS PER IS:2673-2002 , UNLESS OTHERWISE SPECIFIED

SCALE	3:1
AREA mm ²	111.275
PERIMETER mm.	104.615
WEIGHT kg/m	0.300

PARTY'S NAME	GENERAL CATEGORY, DELHI MARKET
--------------	--------------------------------

PARTY'S DRAWING No.	AS PER SAMPLE
---------------------	---------------

ALLOY & TEMPER	HE9 WP
----------------	--------

DESCRIPTION	ROUND TUBE
-------------	------------

DRAWING No.	SECTION No.
P-12997	-
13570	13570