

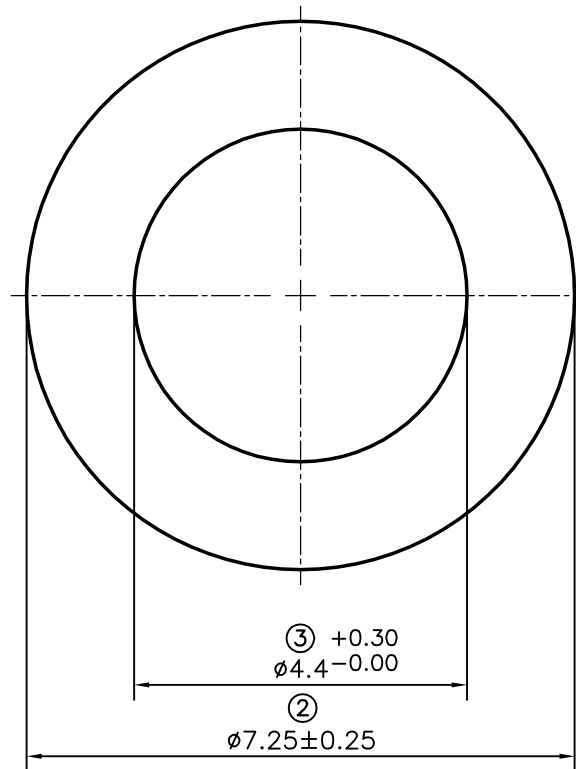
P-12539

S3661

13576



SCALE: - 1:1

**ISSUE-2**

1. ID CHANGED FROM $\phi 4.45$ TO $\phi 4.4 \pm 0.20$
2. TOLERANCE ADDED ON OD $\phi 7.25 \pm 0.25$

ISSUE-3

1. TOLERANCE CHANGED FROM $\phi 4.4 \pm 0.20$ TO $\phi 4.4 \begin{matrix} +0.30 \\ -0.00 \end{matrix}$



SYMBOL OF QUALITY
AN ISO 9001 COMPANY

JINDAL ALUMINIUM LTD.
BANGALORE-560073 (INDIA)

	NAME	DATE
DRAWN	SRIVATHSA	18-03-2013
CHECKED		
APPROVED	S.S.GARG	25-03-2013
SCALE		10:1
AREA mm ²		26.077
PERIMETER mm.		22.777
WEIGHT kg/m		0.070
DRAWING No.		SECTION No.
P-12539		-
S3661		S3661-ISSUE-3
13576		13576

1. ALL DIMENSIONS ARE IN mm.
2. ROUND OFF ALL SHARP CORNERS WITH 0.40 mm.
3. TOLERANCES WILL BE AS PER IS:2673-2002, UNLESS OTHERWISE SPECIFIED

PARTY'S NAME	PERFECT ENTERPRISE, NEW DELHI
PARTY'S DRAWING No.	AS PER SPECIFICATION & REQUIREMENT
ALLOY & TEMPER	EC
DESCRIPTION	ROUNT TUBE