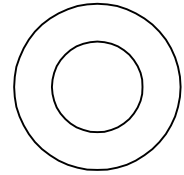


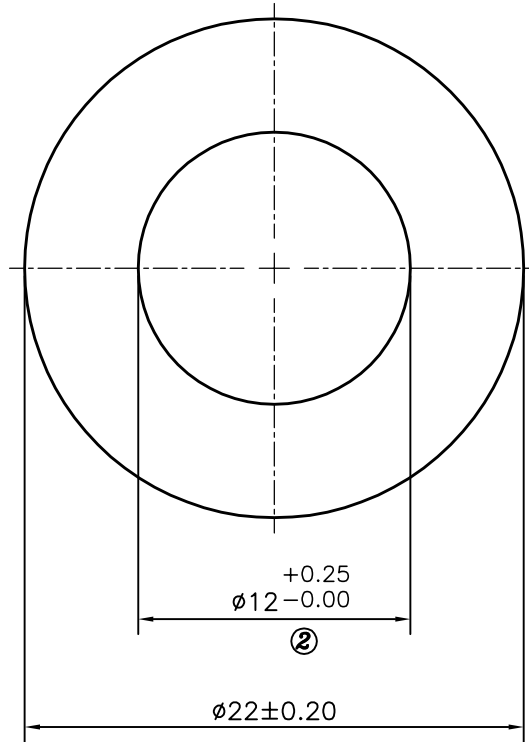
P-11621-1

S3255

13589



SCALE :- 1:1



**ISSUE (2) :-** TOLERANCE CHANGED FROM  $\phi 12_{-0.00}^{+0.40}$  TO  $\phi 12_{-0.00}^{+0.25}$



SYMBOL OF QUALITY  
AN ISO 9001 COMPANY

**JINDAL ALUMINIUM LTD.**  
BANGALORE-560073 (INDIA)

	NAME	DATE
DRAWN	PARVESH	06-05-2013
CHECKED		
APPROVED	S.S.GARG	13-05-2013
SCALE		3:1
AREA mm <sup>2</sup>		267.035
PERIMETER mm.		69.115
WEIGHT kg/m		0.721
DRAWING No.		SECTION No.
P-11621-1		-
S3255		S3255 (ISSUE-2)
13589		13589

1. ALL DIMENSIONS ARE IN mm.
2. ROUND OFF ALL SHARP CORNERS WITH 0.40 mm.
3. TOLERANCES WILL BE AS PER IS:2673-2002, UNLESS OTHERWISE SPECIFIED

PARTY'S NAME JARAA CNC PRODUCTS, HOSUR

PARTY'S DRAWING No. 1A1583-13

ALLOY & TEMPER 6061 T6

DESCRIPTION ROUND TUBE