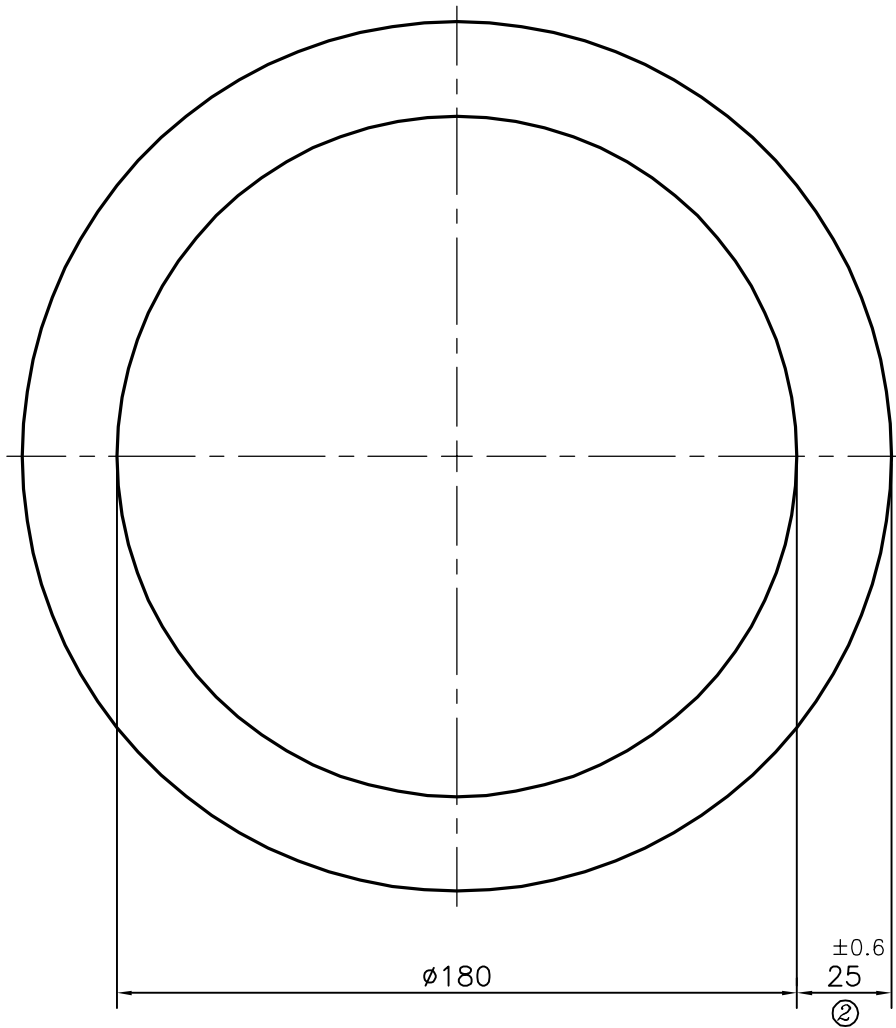


P-12527


S3772

13636



**ISSUE (2) :-**

TOLERANCE ADDED ON THICKNESS.

 SYMBOL OF QUALITY AN ISO 9001 COMPANY	<b>JINDAL ALUMINIUM LTD.</b> <i>BANGALORE-560073 (INDIA)</i>			NAME	DATE
		DRAWN	<i>PARVESH</i>	15-07-2013	
		CHECKED			
		APPROVED	<i>S.S.CARG</i>	22-07-2013	
1. ALL DIMENSIONS ARE IN mm. 2. ROUND OFF ALL SHARP CORNERS WITH 0.40 mm. 3. TOLERANCES WILL BE AS PER IS:2673-2002, UNLESS OTHERWISE SPECIFIED		SCALE		0.5:1	
		AREA mm <sup>2</sup>		16100.662	
		PERIMETER mm.		722.566	
		WEIGHT kg/m		43.472	
PARTY'S NAME	GOVEL TRADING CORPORATION, SECUNDERABAD	DRAWING No.		SECTION No.	
PARTY'S DRAWING No.	AS PER SPECIFICATION	P-12527		-	
ALLOY & TEMPER	HE20 WP	S3772		S3772(ISSUE-2)	
		13636		13636	
DESCRIPTION	ROUND TUBE				