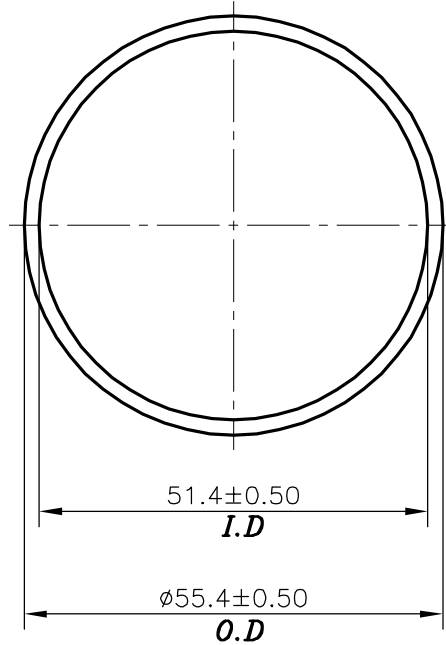


P-21516

13777



TOLERANCES ON OVERALL DIMENSIONS OF HOLLOW SECTIONS

UPTO 20.0mm - ± 0.30	UPTO 80.0mm - ± 0.70	UPTO 180.0mm - ± 1.27	1. STRAIGHTNESS=1.7mm/M 2. TWIST=1.7mm/M 3. ANGULARITY= $\pm 2^\circ$ 4. FLATNESS =0.006xWIDTH
UPTO 30.0mm - ± 0.38	UPTO 100.0mm - ± 0.80	UPTO 200.0mm - ± 1.40	
UPTO 40.0mm - ± 0.45	UPTO 120.0mm - ± 0.90	UPTO 225.0mm - ± 1.52	
UPTO 50.0mm - ± 0.52	UPTO 140.0mm - ± 1.00		
UPTO 60.0mm - ± 0.60	UPTO 160.0mm - ± 1.14		



SYMBOL OF QUALITY
AN ISO 9001 COMPANY

JINDAL ALUMINIUM LTD.
BANGALORE-560073 (INDIA)

	NAME	DATE
DRAWN	DARPAN	22-09-2020
CHECKED		
APPROVED	B.NATARAJA	29-09-2020

1. ALL DIMENSIONS ARE IN mm.
2. ROUND OFF ALL SHARP CORNERS WITH 0.40 mm.
3. TOLERANCES WILL BE AS PER **IS:2673-2002** , UNLESS OTHERWISE SPECIFIED

PARTY'S NAME	MEERUT SPORTS INDUSTRIES, MEERUT
PARTY'S DRAWING No.	AS PER SPECIFICATION
ALLOY & TEMPER	HE9 P
DESCRIPTION	ROUND TUBE