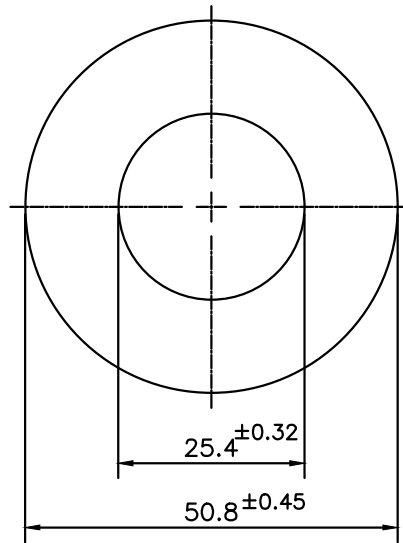



IAL-B-295

13855



1. STRAIGHTNESS=1.5mm/M
2. TWIST=1/4" /300mm.
3. ANGULARITY= ±2°

| | | | | |
|--|---|----------------------|----------------|-------------|
|  SYMBOL OF QUALITY AN ISO 9001 COMPANY | JINDAL ALUMINIUM LTD. BANGALORE-560073 (INDIA) | NAME | | DATE |
| | | DRAWN | PARVESH | 06-01-2022 |
| 1. ALL DIMENSIONS ARE IN mm. 2. ROUND OFF ALL SHARP CORNERS WITH 0.40 mm. 3. TOLERANCES WILL BE AS PER IS:2673-2002 , UNLESS OTHERWISE SPECIFIED | | CHECKED | | |
| | | APPROVED | | |
| PARTY'S NAME - | | SCALE | | 1:1 |
| | | AREA mm ² | | 1520.122 |
| PARTY'S DRAWING No. AS PER DRAWING | | PERIMETER mm. | | 159.593 |
| | | WEIGHT kg/m | | 4.104 |
| ALLOY & TEMPER HE30 | | DRAWING No. | | SECTION No. |
| | | IAL-B-295 | | - |
| DESCRIPTION ROUND TUBE | | 13855 | | 13855 |
| | | | | |