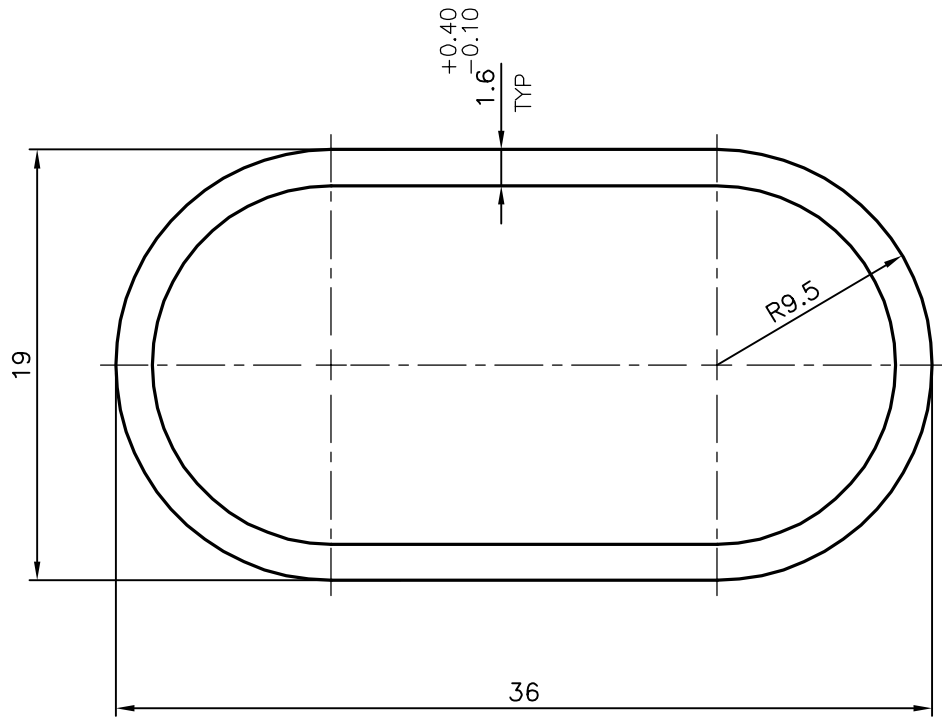
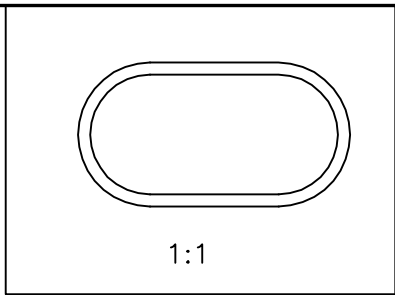


P-17229-3
S5496
15010



ISSUE-2 :-TOLERANCE ADDED ON THICKNESS 1.60^{+0.40}_{-0.10}

TOLERANCES ON OVERALL DIMENSIONS OF HOLLOW SECTIONS

UPTO 20.0mm - ±0.30	UPTO 80.0mm - ±0.70	UPTO 180.0mm - ±1.27	1. STRAIGHTNESS=1.7mm/M 2. TWIST=1.7mm/M 3. ANGULARITY= ±2° 4. FLATNESS =0.006xWIDTH
UPTO 30.0mm - ±0.38	UPTO 100.0mm - ±0.80	UPTO 200.0mm - ±1.40	
UPTO 40.0mm - ±0.45	UPTO 120.0mm - ±0.90	UPTO 225.0mm - ±1.52	
UPTO 50.0mm - ±0.52	UPTO 140.0mm - ±1.00		
UPTO 60.0mm - ±0.60	UPTO 160.0mm - ±1.14		

<p>SYMBOL OF QUALITY AN ISO 9001 COMPANY</p>	<p>JINDAL ALUMINIUM LTD. BANGALORE-560073 (INDIA)</p>	DRAWN	J.P.KAUSHIK	DATE	10-10-2017
		CHECKED			
1. ALL DIMENSIONS ARE IN mm. 2. ROUND OFF ALL SHARP CORNERS WITH 0.40 mm. 3. TOLERANCES WILL BE AS PER IS:6477-1983 UNLESS OTHERWISE SPECIFIED		APPROVED	B.NATARAJA		13-10-2017
		SCALE			3:1
PARTY'S NAME THE REGISTRAR, CHENNAI		AREA mm ²			141.862
		PERIMETER mm.			93.69
PARTY'S DRAWING No. AS PER DRAWING & REQUIREMENT		WEIGHT kg/m			0.383
		DRAWING No.	P-17229-3	SECTION No.	-
ALLOY & TEMPER 6063 'O'			S5496		S5496(ISSUE-2)
			15010		15010
DESCRIPTION OVAL TUBE					