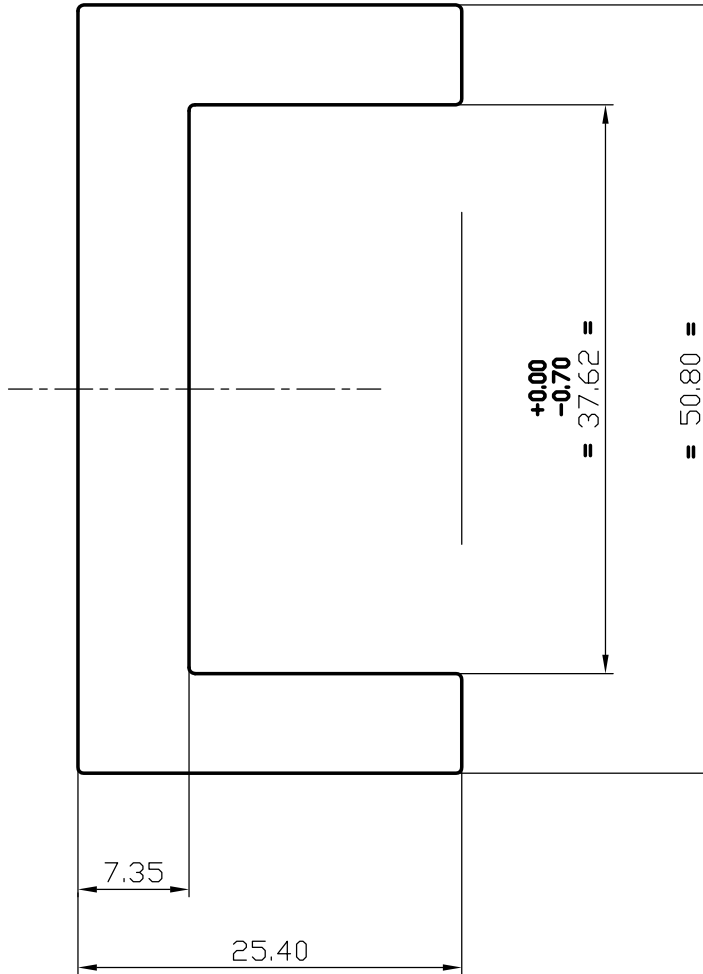
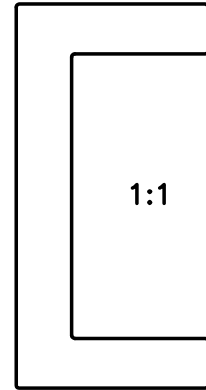



S550

3117

15701



| | | | |
|--|--|-------------|----------------------|
|  SYMBOL OF QUALITY AN ISO 9002 COMPANY | JINDAL ALUMINIUM LTD. BANGALORE-560073 (INDIA) | NAME | DATE |
| | | DRAWN | P,KULKARNI 19-6-2000 |
| 1. ALL DIMENSIONS ARE IN mm. 2. ROUND OFF ALL SHARP CORNERS WITH 0.40 mm. 3. TOLERANCES WILL BE AS PER I.S. 3965-1981 UNLESS OTHERWISE SPECIFIED | | CHECKED | |
| | | APPROVED | |
| | | SCALE | 2:1 |
| PARTY'S NAME | GENEVA FINEPUNCH ENCLOSURES, B,LORE | WEIGHT kg/m | 1.650 |
| PARTY'S DRAWING No. | 46-265996 & AS PER SAMPLE ALSO | SECTION No. | 15701 |
| ALLOY & TEMPER | 6061 T6 | DRAWING No. | |
| DESCRIPTION | VERTICAL GUIDE | 15701 | |