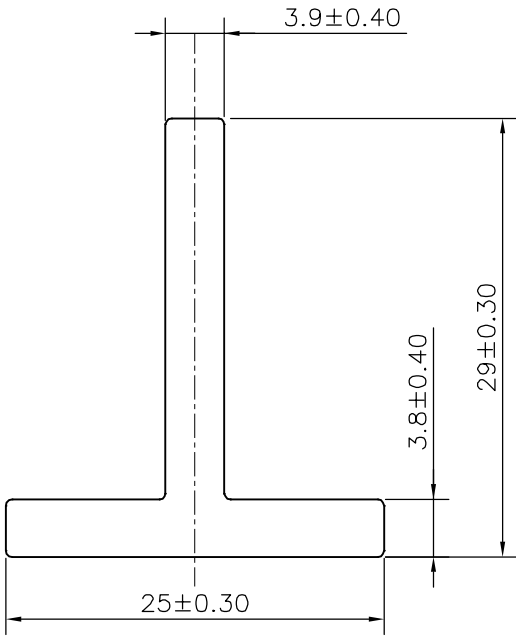
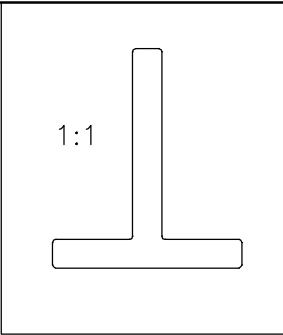



P-19047-1
X2483
16159



TOLERANCES ON OVERALL DIMENSIONS OF HOLLOW SECTIONS

UPTO 20.0mm - ±0.30	UPTO 80.0mm - ±0.70	UPTO 180.0mm - ±1.27	1. STRAIGHTNESS=1.7mm/M 2. TWIST=1.7mm/M 3. ANGULARITY= ±2° 4. FLATNESS =0.006xWIDTH
UPTO 30.0mm - ±0.38	UPTO 100.0mm - ±0.80	UPTO 200.0mm - ±1.40	
UPTO 40.0mm - ±0.45	UPTO 120.0mm - ±0.90	UPTO 225.0mm - ±1.52	
UPTO 50.0mm - ±0.52	UPTO 140.0mm - ±1.00		
UPTO 60.0mm - ±0.60	UPTO 160.0mm - ±1.14		

 SYMBOL OF QUALITY AN ISO 9001 COMPANY	JINDAL ALUMINIUM LTD. BANGALORE-560073 (INDIA)	DRAWN	J.P.KAUSHIK	DATE	23-02-2019
		CHECKED			
		APPROVED	B.NATARAJA		13-03-2019
1. ALL DIMENSIONS ARE IN mm. 2. ROUND OFF ALL SHARP CORNERS WITH 0.40 mm. 3. TOLERANCES WILL BE AS PER IS:3965-1981 , UNLESS OTHERWISE SPECIFIED		SCALE		2:1	
		AREA mm ²		193.143	
		PERIMETER mm.		106.627	
		WEIGHT kg/m		0.521	
				DRAWING No.	
PARTY'S NAME	ALUMINIUM TRADING COMPANY, DELHI	P-19047-1			
PARTY'S DRAWING No.	AS PER DRAWING	X2483		X2483	
ALLOY & TEMPER	HE9 WP A3D	16159		16159	
DESCRIPTION	TEE SECTION				