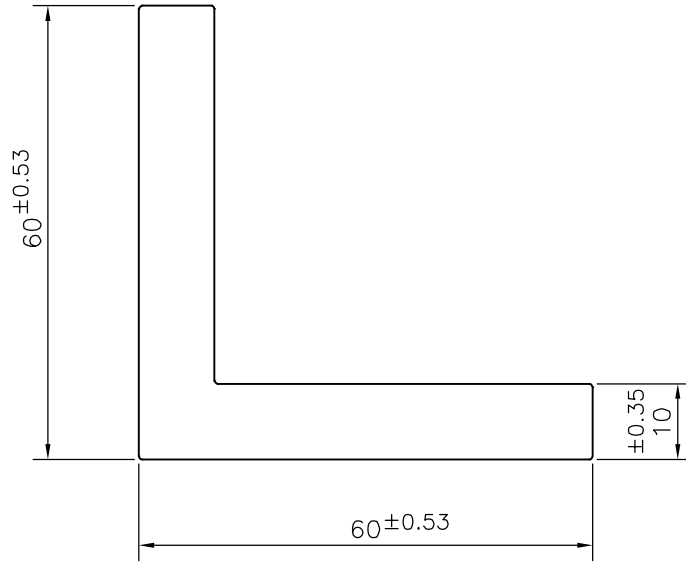



P-15653-1
X1988
16511



1. STRAIGHTNESS=1.0mm/M
2. TWIST=1.0mm/M
3. ANGULARITY= $\pm 2^\circ$
4. FLATNESS =0.007xWIDTH

 SYMBOL OF QUALITY AN ISO 9001 COMPANY	JINDAL ALUMINIUM LTD. <i>BANGALORE-560073 (INDIA)</i>		NAME	DATE
		DRAWN	PARVESH	19-03-2016
		CHECKED		
		APPROVED	S.S. GARG	20-04-2016
1. ALL DIMENSIONS ARE IN mm. 2. ROUND OFF ALL SHARP CORNERS WITH 0.40 mm. 3. TOLERANCES WILL BE AS PER IS:3965-1981 , UNLESS OTHERWISE SPECIFIED		SCALE		1:1
		AREA mm ²		1099.863
		PERIMETER mm.		238.97
		WEIGHT kg/m		2.970
PARTY'S NAME	JARAA CNC PRODUCTS, HOSUR	DRAWING No.	SECTION No.	
PARTY'S DRAWING No.	000704	P-15653-1	-	
ALLOY & TEMPER	6063 T5	X1988	X1988	
		16511	16511	
DESCRIPTION	EQUAL ANGLE SECTION			