

P-7558

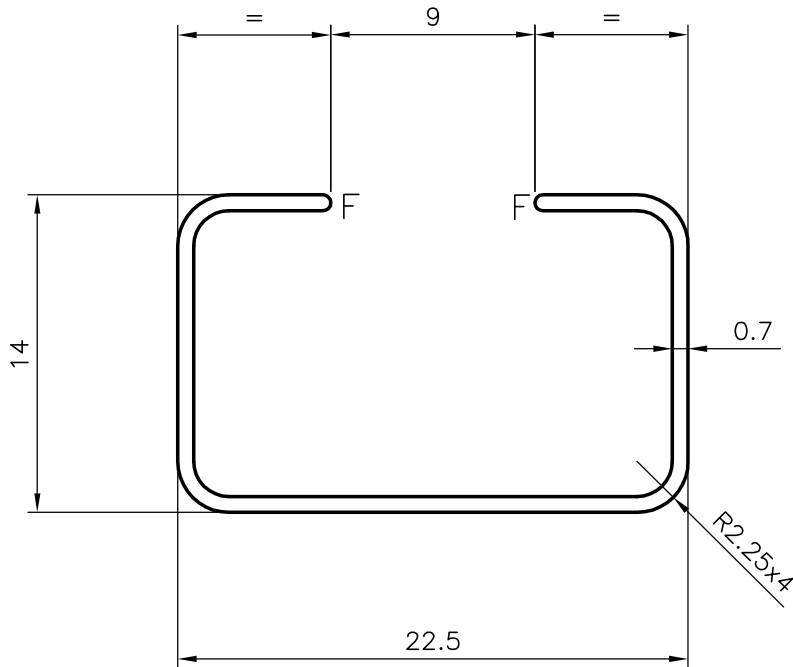
17647



1:1

GENERAL WALL THICKNESS = 0.70mm

F = FULL RADII (2 PLACES)



SYMBOL OF QUALITY
AN ISO 9002 COMPANY

JINDAL ALUMINIUM LTD.
BANGALORE-560073 (INDIA)

	NAME	DATE
DRAWN	J.P.KAUSHIK	12-10-2007
CHECKED		
APPROVED		

1. ALL DIMENSIONS ARE IN mm.
2. ROUND OFF ALL SHARP CORNERS WITH 0.40 mm.
3. TOLERANCES WILL BE AS PER IS:3965-1981 UNLESS OTHERWISE SPECIFIED

SCALE	3:1
AREA mm ²	40.451
PERIMETER mm.	116.675
WEIGHT kg/m	0.109

PARTY'S NAME	GENERAL CATEGORY, COCHIN MARKET	DRAWING No.	SECTION No.
PARTY'S DRAWING No.	LIGHTER OF SECTION NO.17557	P-7558	-
ALLOY & TEMPER	HE9 WP	17647	17647
DESCRIPTION	MISCELLANEOUS CHANNEL		