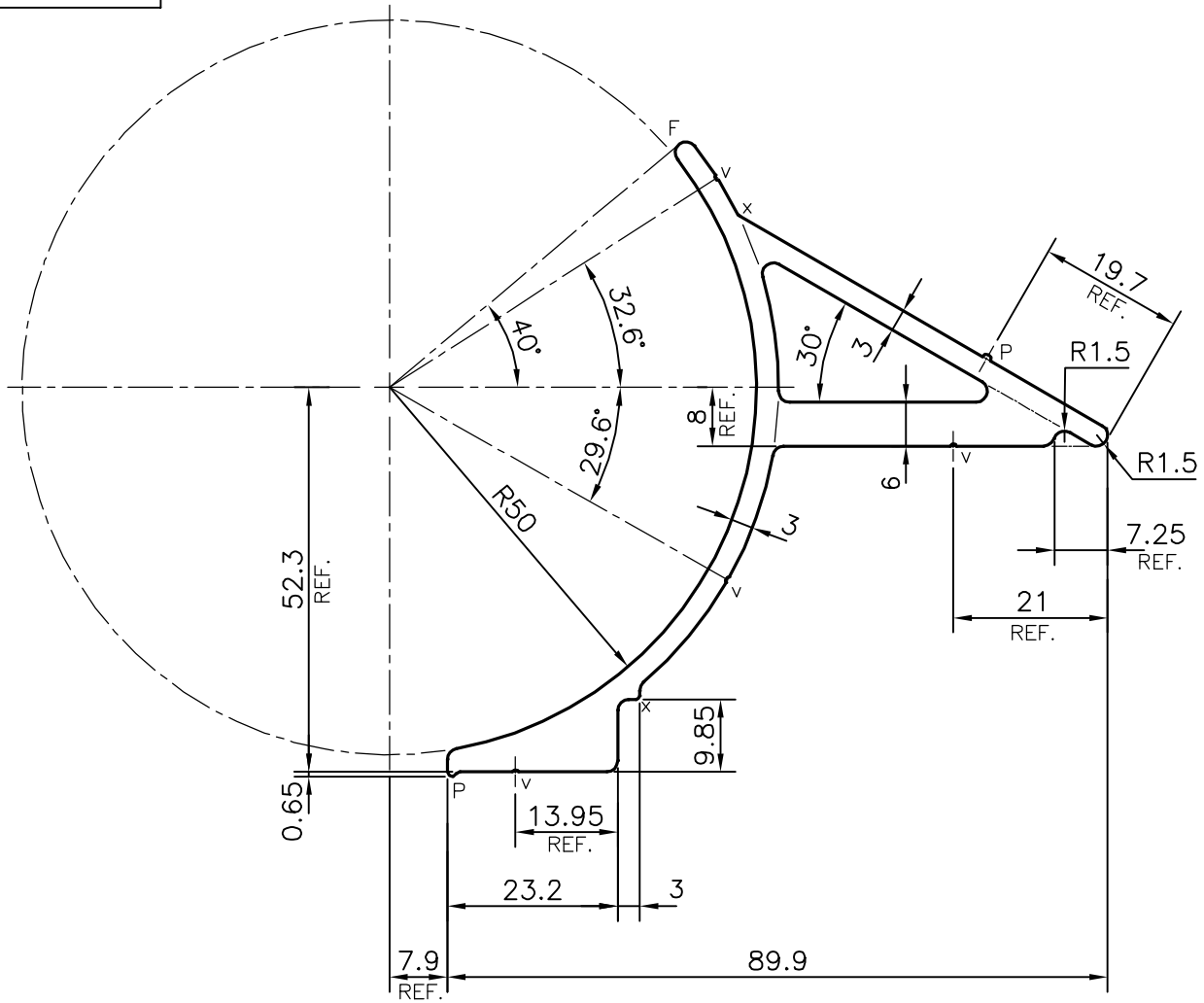


P-13572

S4299

17733



P = PIP 0.65 mm. (2 PLACES)  
 F = FULL RADIUS (1 PLACE)  
 V = VEE GROOVE 0.3x90° (4 PLACES)  
 X = RADIUS 0.5 mm. (2 PLACES)

TOLERANCES ON OVERALL WIDTHS & WIDTHS ACROSS FLATS OF BARS, & REGULAR SECTIONS

UPTO 6.40mm - ±0.20	UPTO 32.0mm - ±0.38	UPTO 120.0mm - ±0.85	1. STRAIGHTNESS=1.7mm/M 2. TWIST=1.7mm/M 3. ANGULARITY= ±2° 4. FLATNESS =0.007xWIDTH
UPTO 10.0mm - ±0.23	UPTO 50.0mm - ±0.46	UPTO 160.0mm - ±1.02	
UPTO 12.0mm - ±0.25	UPTO 60.0mm - ±0.53	UPTO 200.0mm - ±1.14	
UPTO 16.0mm - ±0.28	UPTO 80.0mm - ±0.69	UPTO 250.0mm - ±1.40	
UPTO 25.0mm - ±0.30	UPTO 100.0mm - ±0.75	UPTO 300.0mm - ±1.65	



SYMBOL OF QUALITY  
AN ISO 9001 COMPANY

**JINDAL ALUMINIUM LTD.**  
BANGALORE-560073 (INDIA)

	NAME	DATE
DRAWN	PARVESH	06-05-2014
CHECKED		
APPROVED	S.S.GARG	15-11-2014
SCALE		1:1
AREA mm <sup>2</sup>		809.008
PERIMETER mm.		305.26
WEIGHT kg/m		2.184
DRAWING No.	SECTION No.	

1. ALL DIMENSIONS ARE IN mm.
2. ROUND OFF ALL SHARP CORNERS WITH 1.50 mm.
3. TOLERANCES WILL BE AS PER IS:6477-1983, UNLESS OTHERWISE SPECIFIED

PARTY'S NAME	ENERCON ASIA PACIFIC SYSTEMS. PVT. LTD., HOSUR
PARTY'S DRAWING No.	AS PER AUTO CAD DRAWING- AL7146-01
ALLOY & TEMPER	6063 T5
DESCRIPTION	MISC. SECTION

P-13572	-
S4299	S4299
17733	17733