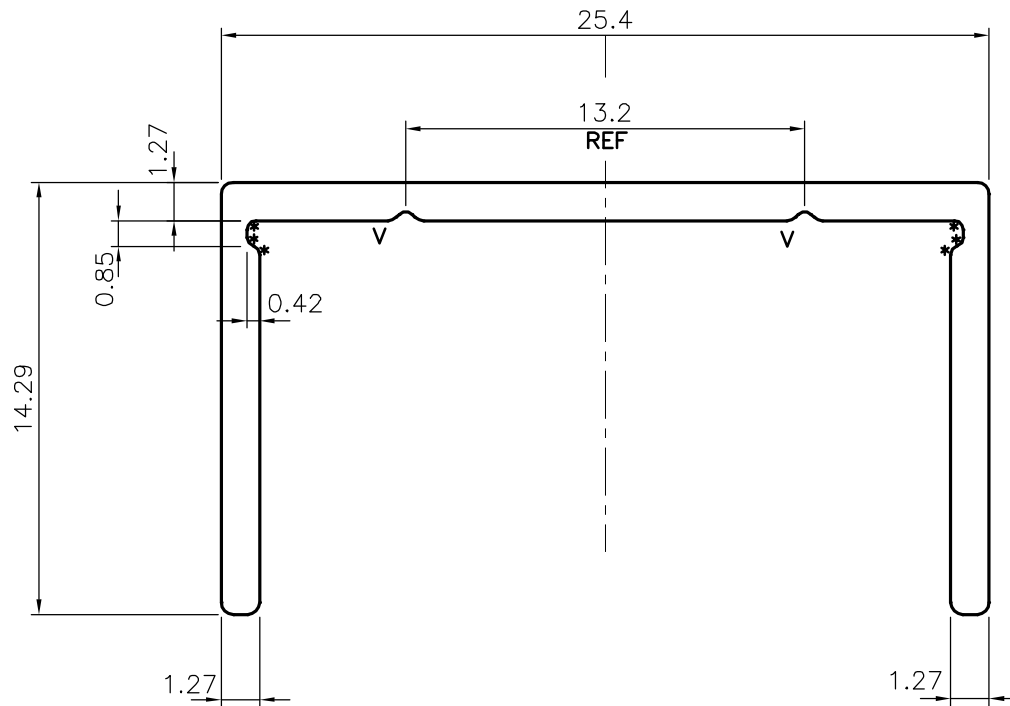


P-21268

17772

1:1



* = RADIUS 0.3 (6 PLACES)

V = V GROOVE 0.3x90° (2 PLACES)

TOLERANCES ON OVERALL WIDTHS & WIDTHS ACROSS FLATS OF BARS, & REGULAR SECTIONS

UPTO 6.40mm - ±0.20	UPTO 32.0mm - ±0.38	UPTO 120.0mm - ±0.85	1. STRAIGHTNESS=1.7mm/M 2. TWIST=1.7mm/M 3. ANGULARITY= ±2° 4. FLATNESS =0.007xWIDTH
UPTO 10.0mm - ±0.23	UPTO 50.0mm - ±0.46	UPTO 160.0mm - ±1.02	
UPTO 12.0mm - ±0.25	UPTO 60.0mm - ±0.53	UPTO 200.0mm - ±1.14	
UPTO 16.0mm - ±0.28	UPTO 80.0mm - ±0.69	UPTO 250.0mm - ±1.40	
UPTO 25.0mm - ±0.30	UPTO 100.0mm - ±0.75	UPTO 300.0mm - ±1.65	



SYMBOL OF QUALITY
AN ISO 9001 COMPANY

JINDAL ALUMINIUM LTD.
BANGALORE-560073 (INDIA)

	NAME	DATE
DRAWN	J.P.KAUSHIK	11-08-2020
CHECKED		
APPROVED	J.N.RAI	03-09-2020

- ALL DIMENSIONS ARE IN mm.
- ROUND OFF ALL SHARP CORNERS WITH 0.40 mm.
- TOLERANCES WILL BE AS PER **IS:3965-1981**, UNLESS OTHERWISE SPECIFIED

SCALE	4:1
AREA mm ²	64.124
PERIMETER mm.	105.724
WEIGHT kg/m	0.173

PARTY'S NAME	KEWAUNEE LABWAY INDIA PVT. LTD., BANGALORE	DRAWING No.	P-21268	SECTION No.	-
PARTY'S DRAWING No.	F-6546-00 REV. F		17772		17772
ALLOY & TEMPER	6063 T6				
DESCRIPTION	LOWER SASH TRACK SECTION				