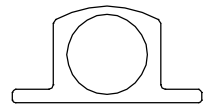


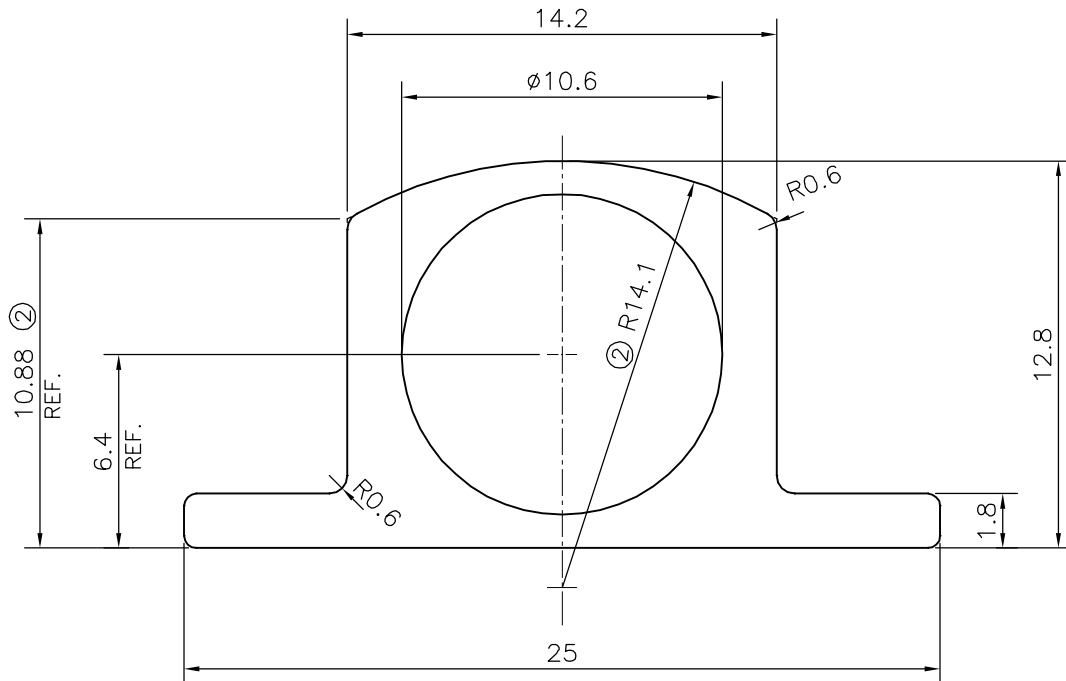
P-18628

X2381

18078



SCALE: - 1:1



ISSUE-2

DIMENSION CHANGED FROM 9.76 mm TO 10.88 mm

&amp; RADIUS CHANGED FROM 9.8 TO 14.1 mm

WEIGHT CHANGED FROM 0.269 TO 0.281 kg/m

## TOLERANCES ON OVERALL WIDTHS &amp; WIDTHS ACROSS FLATS OF BARS, &amp; REGULAR SECTIONS

UPTO 6.40mm - ±0.20	UPTO 32.0mm - ±0.38	UPTO 120.0mm - ±0.85	1. STRAIGHTNESS=1.7mm/M 2. TWIST=1.7mm/M 3. ANGULARITY= ±2° 4. FLATNESS =0.007xWIDTH
UPTO 10.0mm - ±0.23	UPTO 50.0mm - ±0.46	UPTO 160.0mm - ±1.02	
UPTO 12.0mm - ±0.25	UPTO 60.0mm - ±0.53	UPTO 200.0mm - ±1.14	
UPTO 16.0mm - ±0.28	UPTO 80.0mm - ±0.69	UPTO 250.0mm - ±1.40	
UPTO 25.0mm - ±0.30	UPTO 100.0mm - ±0.75	UPTO 300.0mm - ±1.65	

SYMBOL OF QUALITY  
AN ISO 9001 COMPANY

**JINDAL ALUMINIUM LTD.**  
BANGALORE-560073 (INDIA)

	NAME	DATE
DRAWN	J.P.KAUSHIK	18-06-2019
CHECKED		
APPROVED	B.NATARAJA	21-06-2019
SCALE		4:1
AREA mm <sup>2</sup>		104.113
PERIMETER mm.		71.111
WEIGHT kg/m		0.281
DRAWING No.		SECTION No.
P-18628		-
X2381		X2381
18078		18078(ISSUE-2)

1. ALL DIMENSIONS ARE IN mm.
2. ROUND OFF ALL SHARP CORNERS WITH 0.40 mm.
3. TOLERANCES WILL BE AS PER IS:6477-1983, UNLESS OTHERWISE SPECIFIED

PARTY'S NAME	ALUMINIUM TRADING COMPANY, DELHI
PARTY'S DRAWING No.	MODIFIED OF 18064
ALLOY & TEMPER	HE9 WP A3D
DESCRIPTION	TOWER BOLT SECTION